

cruise
ESTATE AGENTS

OFFERS OVER

£105,000

Kelso Drive
Glasgow, G74 4DD

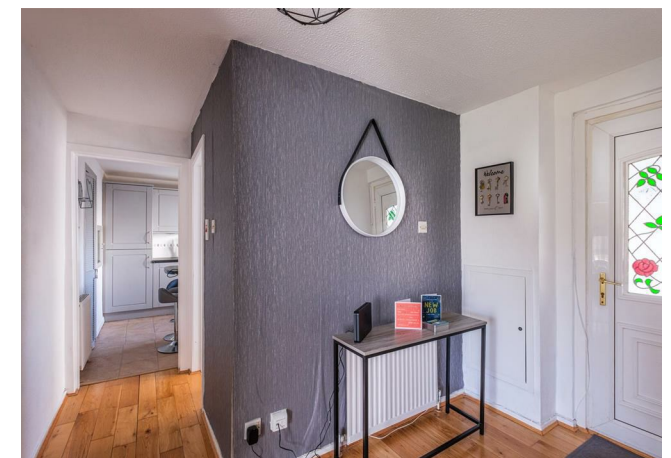
PROPERTY SUMMARY

****CLOSING DATE THURSDAY 2ND APRIL AT 12PM**** Positioned within a quiet and peaceful address conveniently located close by to The Village where a plethora of shops, cafes, and restaurants can be found is this spacious, ground floor, two-bedroom flat. With own front and back door, generous, all on the level accommodation, and private garden, this lovely home is sure to appeal to a broad section of buyers.

The well-proportioned layout of apartments comprises; useful entrance vestibule with storage cupboard large enough for bikes etc, broad and welcoming reception hallway with storage, substantial lounge with feature fireplace and ample space for dining table and chairs, two double bedrooms both with fitted storage, the master flooded with light streaming in from sliding patio doors, modern fitted kitchen with integrated appliances, and three-piece bathroom with over-bath shower.

This fabulous flat further benefits from gas central heating, double glazing, private section of garden, and communal drying green. The close proximity to East Kilbride train station is ideal for those commuting in and out of Glasgow Central.

2











This Floorplan Is Intended To Give An Indication Of The Layout Only.

LOCAL AUTHORITY

South Lanarkshire

TENURE

Freehold

COUNCIL TAX BAND

B

VIEWINGS

By prior appointment only

Energy Efficiency Rating		
	Current	Potential
<i>Very energy efficient - lower running costs</i>		
(92 plus) A		
(81-91) B		
(69-80) C		
(55-68) D	67	74
(39-54) E		
(21-38) F		
(1-20) G		
<i>Not energy efficient - higher running costs</i>		
Scotland	EU Directive 2002/91/EC	

Agents Note: Whilst every care has been taken to prepare these particulars, they are for guidance purposes only. All measurements are approximate and are for general guidance purposes only and whilst every care has been taken to ensure their accuracy, they should not be relied upon and potential buyers/tenants are advised to recheck the measurements



OFFICE ADDRESS

9 Townhead Street
Strathaven
ML10 6AB

OFFICE DETAILS

01357 510088
judithmcgill@cruive-estateagents.co.uk