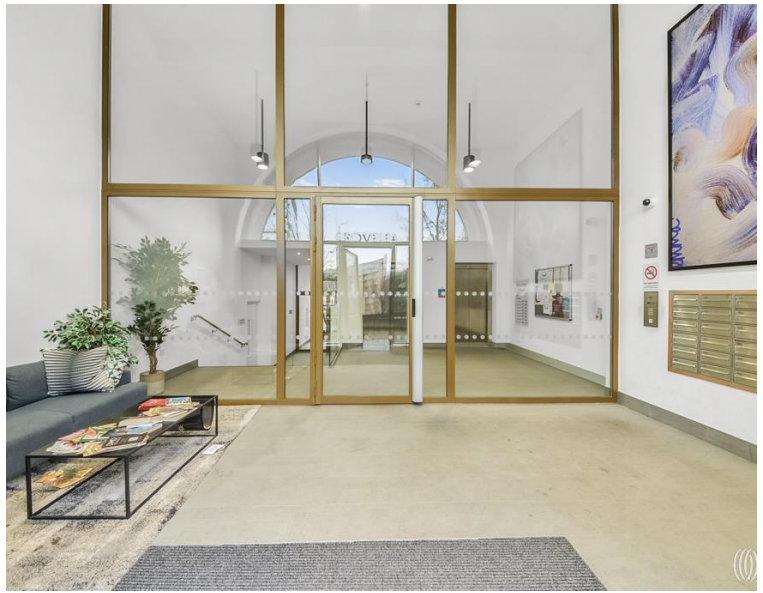




Monkwood Way, London E3
Offers In Excess Of £450,000 Leasehold







Description

Situated along the vibrant Lee Navigation canal in the heart of Hackney Wick, this exceptional development represents contemporary waterside living at its finest. The building's modern architecture and comprehensive amenities create an enviable lifestyle destination for discerning residents seeking the perfect blend of urban convenience and tranquil canal views.

This bright and spacious one-bedroom apartment showcases thoughtful design throughout, beginning with an entrance hall that maximises storage potential. The double bedroom features built-in storage solutions and direct access to the covered balcony, creating a seamless indoor-outdoor living experience. The contemporary family bathroom suite demonstrates quality finishes, while the heart of the home lies in the large, integrated ultra-modern kitchen that flows effortlessly into the spacious living area. The covered balcony terrace extends the living space outdoors, offering a private retreat overlooking the development's canalside setting.

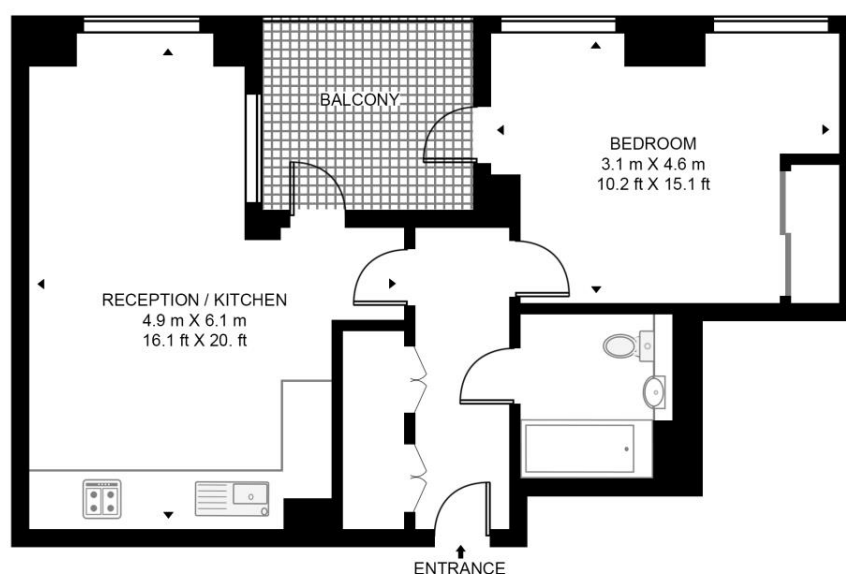
- One bedroom apartment
- Canalside development location
- Covered balcony/terrace
- Air conditioning
- 2nd Floor
- Concierge service
- Bike storage
- Residents' gym
- Olympic Park proximity
- Hackney Wick location

Floorplan

583 sq ft | 54 sq m

GROVELEA COURT

APPROXIMATE GROSS INTERNAL FLOOR AREA 583 SQ.FT (54.2 SQ.M)



SECOND FLOOR



HDVA

This floor plan has been defined by the RICS Code of Measurement. This floor plan and all others are for approximate representative purposes only and upon usage is agreed to as such by the client.

WWW: hdvirtualart.com | TEL: 0203.974.1567 | EMAIL: info@hdvirtualart.com

Stratford
5 Station Street,
London E15 1DA
+4420 3147 1500
Lettingsstratford@eu.jll.com

Urban living, your way.

jll.co.uk/residential

© 2019 Jones Lang LaSalle IP, Inc. All rights reserved. All information contained herein is from sources deemed reliable; however, no representation or warranty is made to the accuracy thereof.

