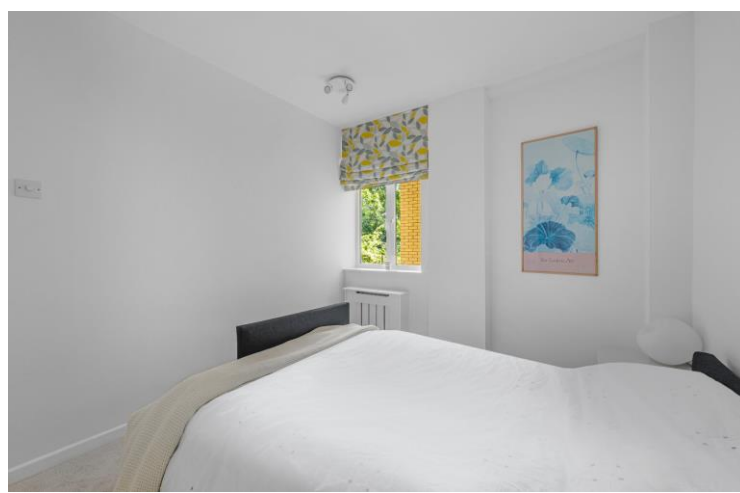




**Chepstow Court**  
Chepstow Crescent, W11







A bright and well-presented one-bedroom apartment located on the first floor of a well-maintained, purpose built block with a lift and porter.

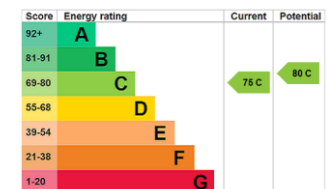
The flat has been fully renovated and is offered in immaculate condition. The open-plan kitchen/reception room features large south facing windows with attractive views over the gardens of Chepstow Crescent, providing excellent natural light. The sleek, modern kitchen offers ample storage and creates a well-balanced living space.

The double bedroom includes a full wall of built in wardrobes and is positioned next to a stylish, fully tiled bathroom. Heating and hot water are included in the service charge, and the flat also benefits from the use of a small storage cupboard just outside the front door.

Ideally located just moments from the fashionable boutiques and restaurants of Westbourne Grove (0.1 miles) and a short stroll from the vibrant Portobello Road (0.3 miles). Notting Hill Gate Underground Station (0.3 miles for the Central, District & Circle Lines) is also nearby, offering excellent transport links across London.

- One-bedroom flat with sleek, modern finish throughout
- South-facing reception with views over gardens
- First floor with lift access in a portered block
- Heating and hot water included in the service charge
- Close to Westbourne Grove and Notting Hill Gate Station

Asking Price £550,000



**Tenure:** Leasehold. 131 years remaining.

**Service Charge:** £3,755 p.a. (includes heating and hot water).

**Ground Rent:** TBC

**Local Authority:** Kensington and Chelsea

**Council Tax Band:** E

**Chestertons Notting Hill Sales**

30 Ledbury Road

Notting Hill

London

W11 2AB

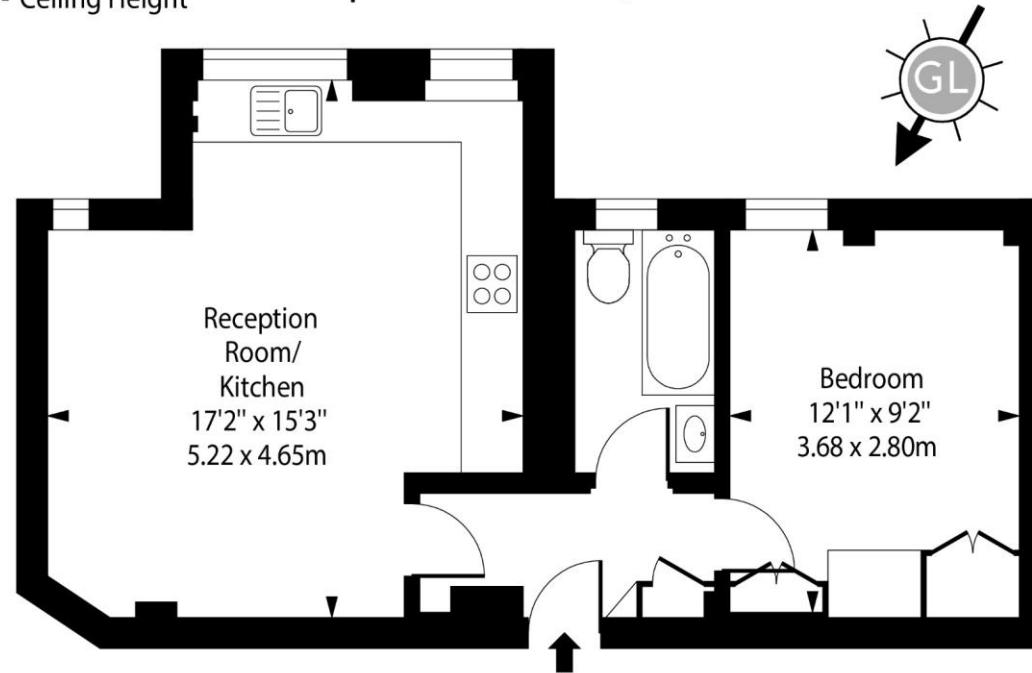
[nottinghill@chestertons.co.uk](mailto:nottinghill@chestertons.co.uk)

0203 040 8585

[chestertons.co.uk](http://chestertons.co.uk)

# Chepstow Court, Chepstow Crescent, W11

○ - Ceiling Height



First Floor

Approx Gross Internal Area      425 Sq Ft - 39.48 Sq M

Every attempt has been made to ensure the accuracy of the floor plan shown. However, all measurements, fixtures, fittings, and data shown are approximate interpretations and for illustrative purposes only. Measured according to the RICS. Not To Scale.

[www.goldlens.co.uk](http://www.goldlens.co.uk)

Ref. No. 029327J

