



Bentworth Road, W12

£650,000

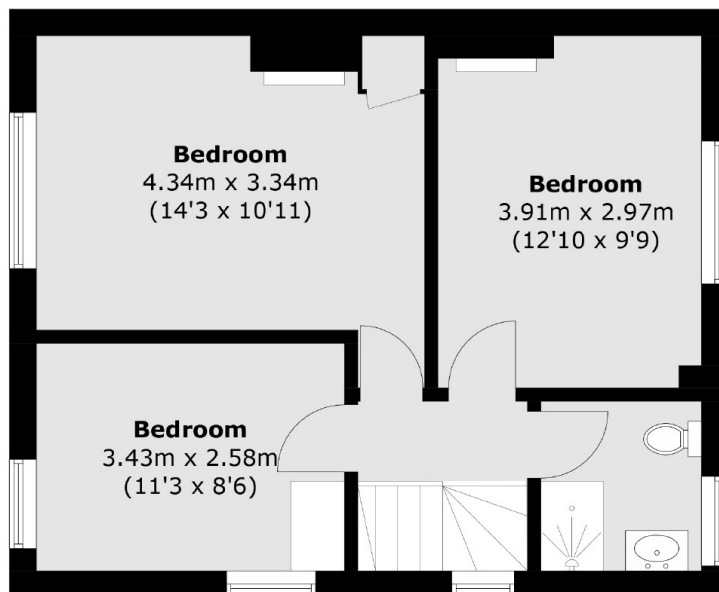
A spacious four bedroom end of terrace house in East Acton. This property has a large reception room, a separate kitchen, a private garden and offers off street parking.

Situated moments from the new bars of Wood Lane in the new Television Centre development, while within easy reach of the amenities of Shepherds Bush and Westfield.

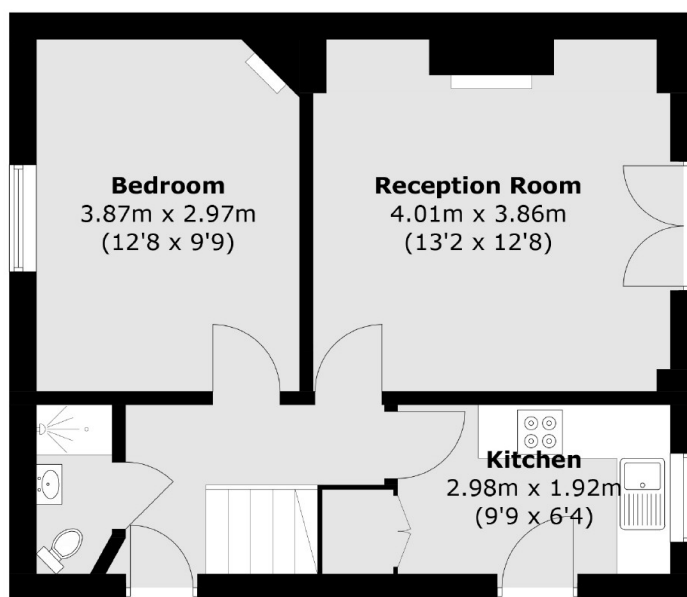
Features

- Four Bedroom
- End Of Terrace
- Off Street Parking
- Private Garden
- Potential To Extend (STPP)
- Westfield Shopping Centre

Bentworth Road, London, W12



First Floor



Ground Floor

Total area (approx.): 87.8 sq. m (945.0 sq. ft)