



Guide Price

£229,950

Freehold

3x  1x  1x 

**Ottawa Crescent, Dover,
Kent, CT16**

Wards
Helping you move forwards



Main features

- Generous front and rear gardens
- Modern kitchen and bathroom
- Stunning views across Dover
- Popular residential area close to schools and transport links
- Well-proportioned throughout

Accommodation

GROUND FLOOR

Entrance Hall
 Lounge: 12'4 x 12'4 (3.76m x 3.76m)
 Conservatory: 10'5 x 8'2 (3.18m x 2.49m)
 Kitchen: 19'1 x 8'5 (5.82m x 2.57m)

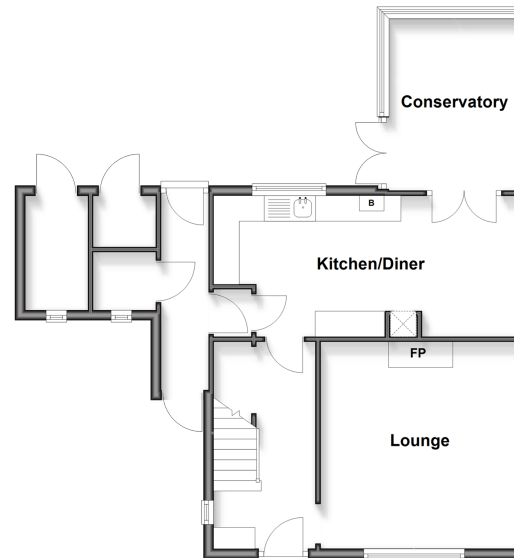
FIRST FLOOR

Bedroom 1: 10'5 x 10'0 (3.18m x 3.05m)
 Bedroom 2: 12'6 x 8'8 (3.81m x 2.64m)
 Bedroom 3: 8'8 x 4'5 (2.64m x 1.35m)
 Bathroom

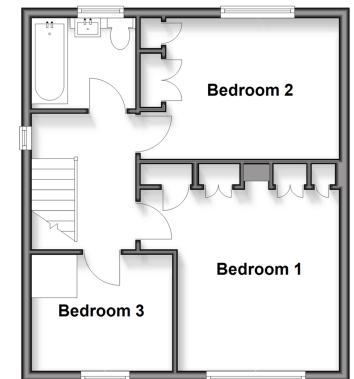
OUTSIDE

Front Garden
 Rear Garden
 Out building/Workshop

Ground Floor
 Approx. 59.7 sq. metres (642.4 sq. feet)



First Floor
 Approx. 41.3 sq. metres (444.7 sq. feet)



Unable to display material information. Please check with the branch for material information details for this property



10734407/20260404/GM/CDH