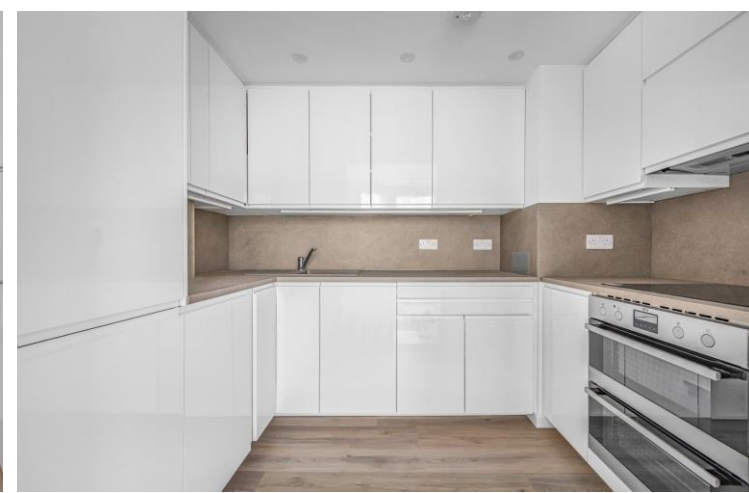
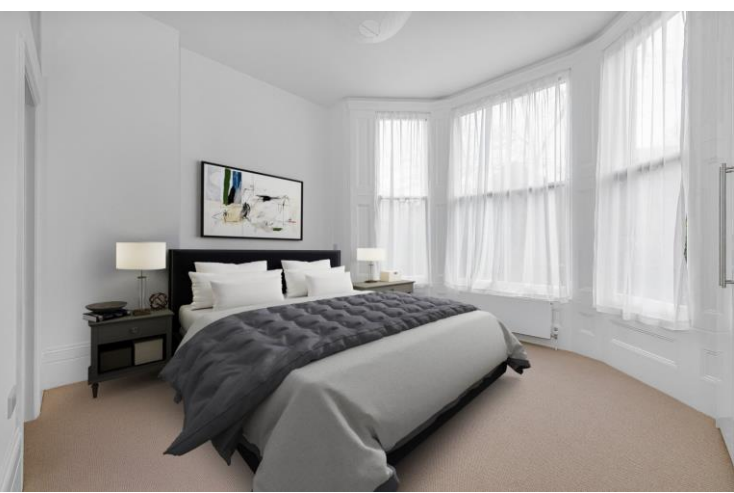




St. Quintin Avenue  
London, W10

CHESTERTONS





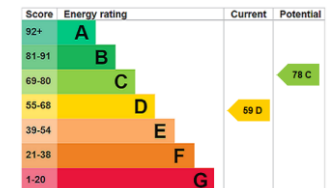
A beautifully refurbished two bedroom, two bathroom raised ground floor flat, ideally positioned on a tree lined street in the heart of North Kensington, W10.

This elegant home forms part of a grand Victorian conversion and offers bright, well balanced living space throughout. The standout feature is the impressive south facing reception room, boasting high ceilings and a large bay window that floods the room with natural light, creating a wonderful sense of space and warmth. The property also benefits from a sleek, modern kitchen, thoughtfully designed for both style and practicality. To the rear of the flat, two generous double bedrooms provide a quiet and private retreat. The main bedroom includes a contemporary ensuite bathroom, while both bedrooms feature built-in storage. A further bathroom and additional hallway storage complete the accommodation.

St. Quintin Avenue is a particularly attractive residential street, ideally located just 0.5 miles from Ladbrooke Grove Underground Station (Circle and Hammersmith & City lines) and 0.9 miles from White City Underground Station (Central line). The vibrant amenities of Portobello Road and Golborne Road, renowned for their boutiques, cafés, bars and restaurants, are also within easy walking distance

- Raised ground floor in Victorian conversion
- Bright south facing reception with bay window
- Two double bedrooms, one ensuite
- Sleek, modern kitchen
- Quiet tree lined street near Portobello Road & Notting Hill

Asking Price £950,000



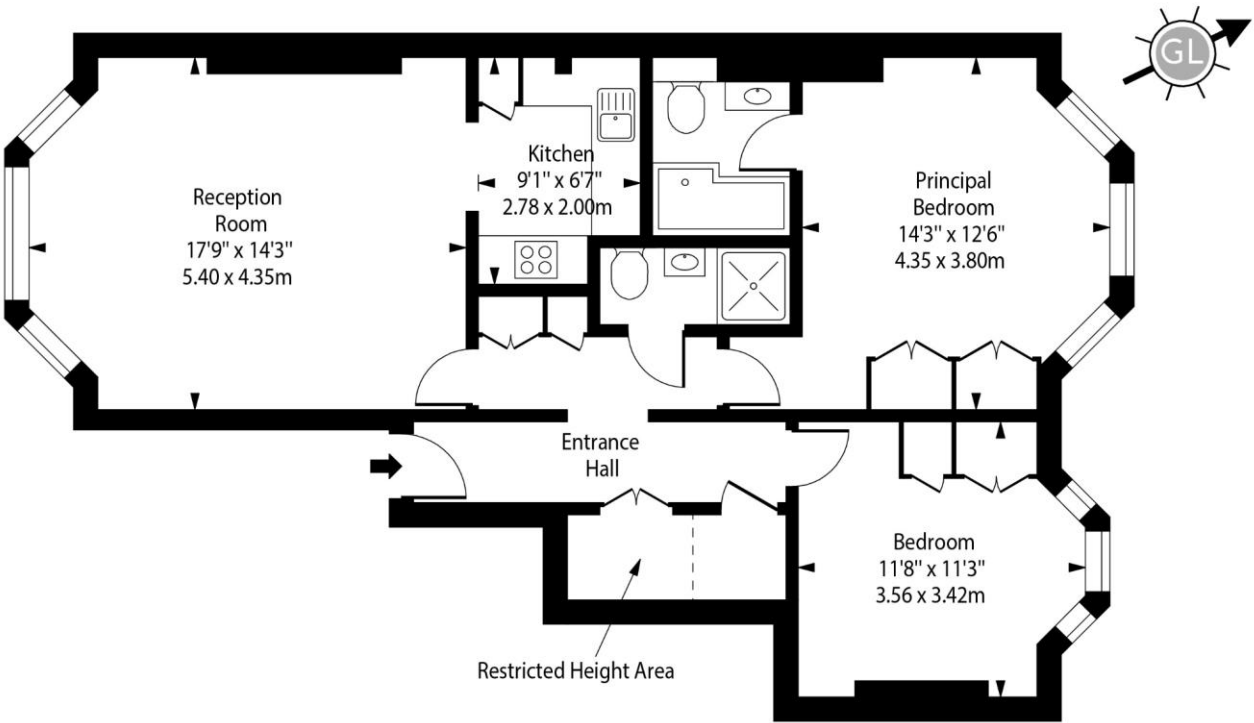
**Tenure:** Share of Freehold 992 years 5 months  
**Service Charge:** £1500 Adhoc  
**Ground Rent:** £0  
**Local Authority:** Kensington and Chelsea  
**Council Tax Band:** E

**Chestertons Notting Hill Sales**

30 Ledbury Road  
 Notting Hill  
 London  
 W11 2AB  
 nottinghill@chestertons.co.uk  
 0203 040 8585

St. Quintin Avenue, W10

○ - Ceiling Height



Raised Ground Floor

Approx Gross Internal Area 790 Sq Ft - 73.39 Sq M

Approx. Floor Area Including Restricted Heights 810 Sq Ft - 75.13 Sq M

Every attempt has been made to ensure the accuracy of the floor plan shown. However, all measurements, fixtures, fittings, and data shown are approximate interpretations and for illustrative purposes only. Measured according to the RICS. Not To Scale.

www.goldlens.co.uk  
Ref. No. 030851A

Chesterton UK Services Limited trading as Chestertons for themselves and for the vendor of this property whose agents they are, give notice that (i) these particulars do not constitute any part of an offer or contract, (ii) all statements contained within these particulars are made without responsibility on the part of Chestertons or the vendor, (iii) whilst made in good faith, none of the statements contained within these particulars are to be relied upon as a statement or representation of fact, (iv) any intending purchasers must satisfy themselves by inspection or otherwise as to the correctness of each of the statements contained within these particulars, (v) the vendor does not make or give either Chestertons or any person in their employment any authority to make or give representation or warranty whatsoever in relation to this property. Wide angle lenses may be used. ©Copyright Chestertons | Chesterton UK Services Limited | Registered Office 40 Connaught Street, Hyde Park, London W2 2AB Registered Company Number 05334580.



This paper is 100% recyclable