



**Guide Price**  
**£360,000**

**Freehold**

3x  2x  1x 

Ingram Close, Larkfield,  
Aylesford, Kent, ME20

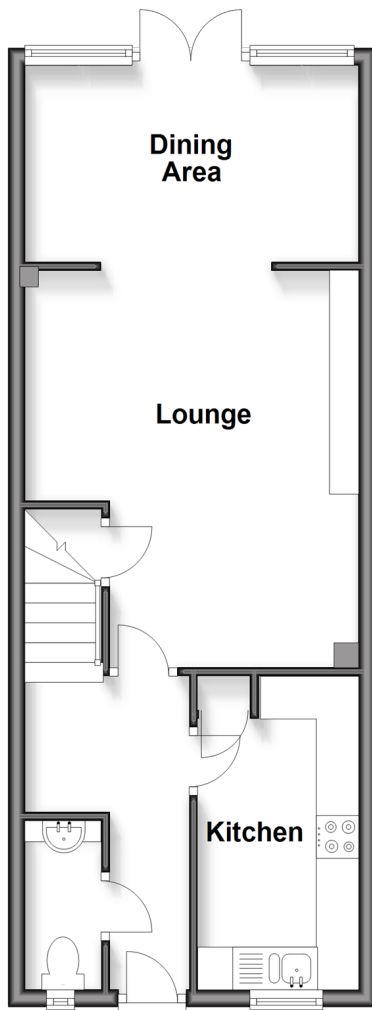
**OVER 60?**

Secure this property  
for up to **59% less!**

*Wards*  
Helping you move forwards

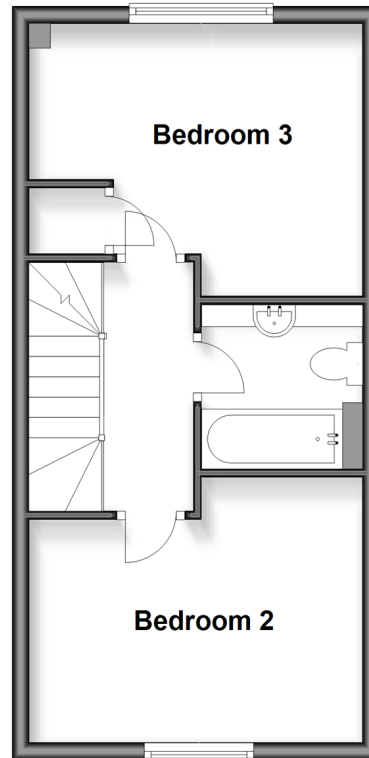
## Ground Floor

Approx. 459.9 sq. feet



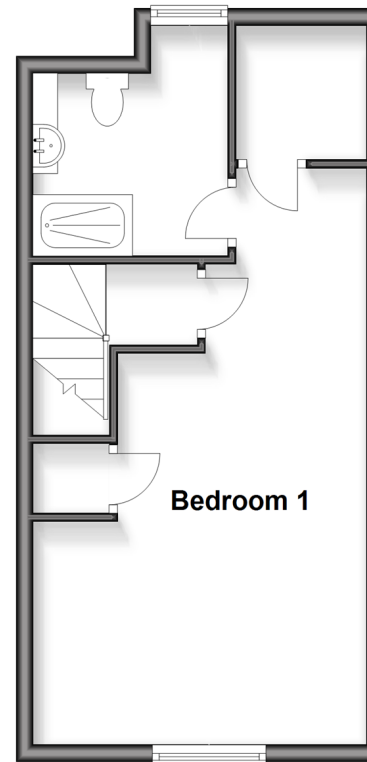
## First Floor

Approx. 357.0 sq. feet



## Second Floor

Approx. 350.8 sq. feet



## Accommodation

### GROUND FLOOR

Entrance Hall

Cloakroom

Kitchen: 12'1 x 6'2 (3.69m x 1.88m)

Lounge: 15'3 x 12'11 (4.65m x 3.94m)

Dining Area: 13'0 x 7'4 (3.97m x 2.24m)

### FIRST FLOOR

Landing

Bedroom 2: 12'10 x 9'8 (3.91m x 2.95m)

Bedroom 3: 13'6 x 10'5 (4.12m x 3.18m)

Bathroom

### SECOND FLOOR

Landing

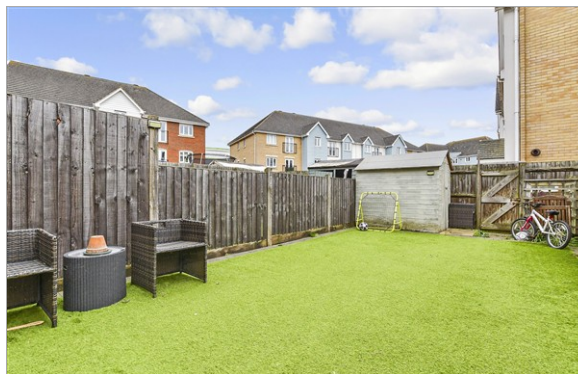
Bedroom 1: 18'2 x 7'2 (5.54m x 2.19m)

En-Suite Shower Room

### OUTSIDE

Front & Rear Gardens

Allocated Parking Space



## Main features

- Sociable lounge/dining area with media wall, that's perfect for bringing the family together
- Handy ground floor cloakroom
- Supersized bedroom 1 with an en-suite shower room & a walk-in wardrobe adds a touch of luxury
- Relax & soak up the sun in the low maintenance rear garden
- Excellent commuter links by road & rail nearby



### Nearest Schools

Primary Schools: Brookfield Junior School 1.0 miles, Lunsford Primary 1.0 miles, St Katherine's School 1.2 miles. Secondary Schools: Grange Park School 1.7 miles, The Malling School 1.9 miles, Holmesdale Technology College 2.1 miles



### Transport Information

Train Stations: New Hythe 0.6 miles, West Malling 2.0 miles, Barming 2.1 miles



### Address

Ingram Close, Larkfield, Aylesford, Kent, ME20



### Directions

For directions to this property please contact us.



*Wards*  
Helping you move forwards

Call Larkfield Branch 01732 847877 ■ [wardsofkent.co.uk](http://wardsofkent.co.uk)



■ Through a Homewise Home For Life Plan people aged 60+ can secure this property for up to 59% less, by purchasing a Lifetime Lease



12935782/20260402/CK/HS1