



58c Teversal Avenue, Nottingham
£2,868 pcm

 **Comfort**
Estates



58c Teversal Avenue

Nottingham, Nottingham

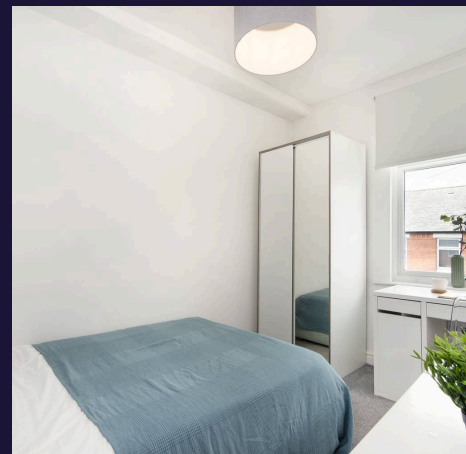
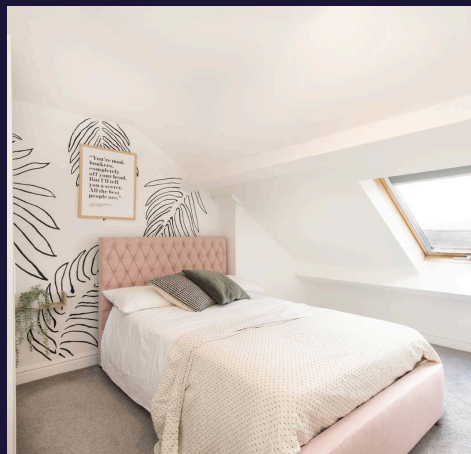
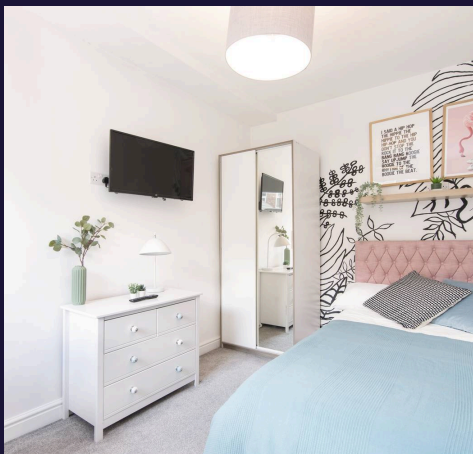
Located in the popular student area of Lenton, this property offers you easy access to both the Nottingham Trent University and the City Centre. Just a short walk from the Castle Retail Park, with supermarkets, gyms, and takeaway options nearby, this property is perfect if you are a student looking for convenience and a great location.

This modern, 4-bedroom home comprises of 4 equally sized luxurious double bedrooms fitted with TVs, an open plan kitchen diner, a living room with a mounted TV, and 2 bathrooms. Each room has a desk, chest of drawers and wardrobe for ample storage whilst the kitchen is fitted with a electric cooker, oven and a fridge/freezer with plenty of storage available, as well as a small breakfast bar.

An Ideal location for students wanting to be at the heart of it all, just a 15-minute walk to Nottingham Trent University with lively pubs, cafés, and shops. Just a short walk from the City Centre and packed with student life.

Don't miss out on making this stunning property your new home – book your viewing today!

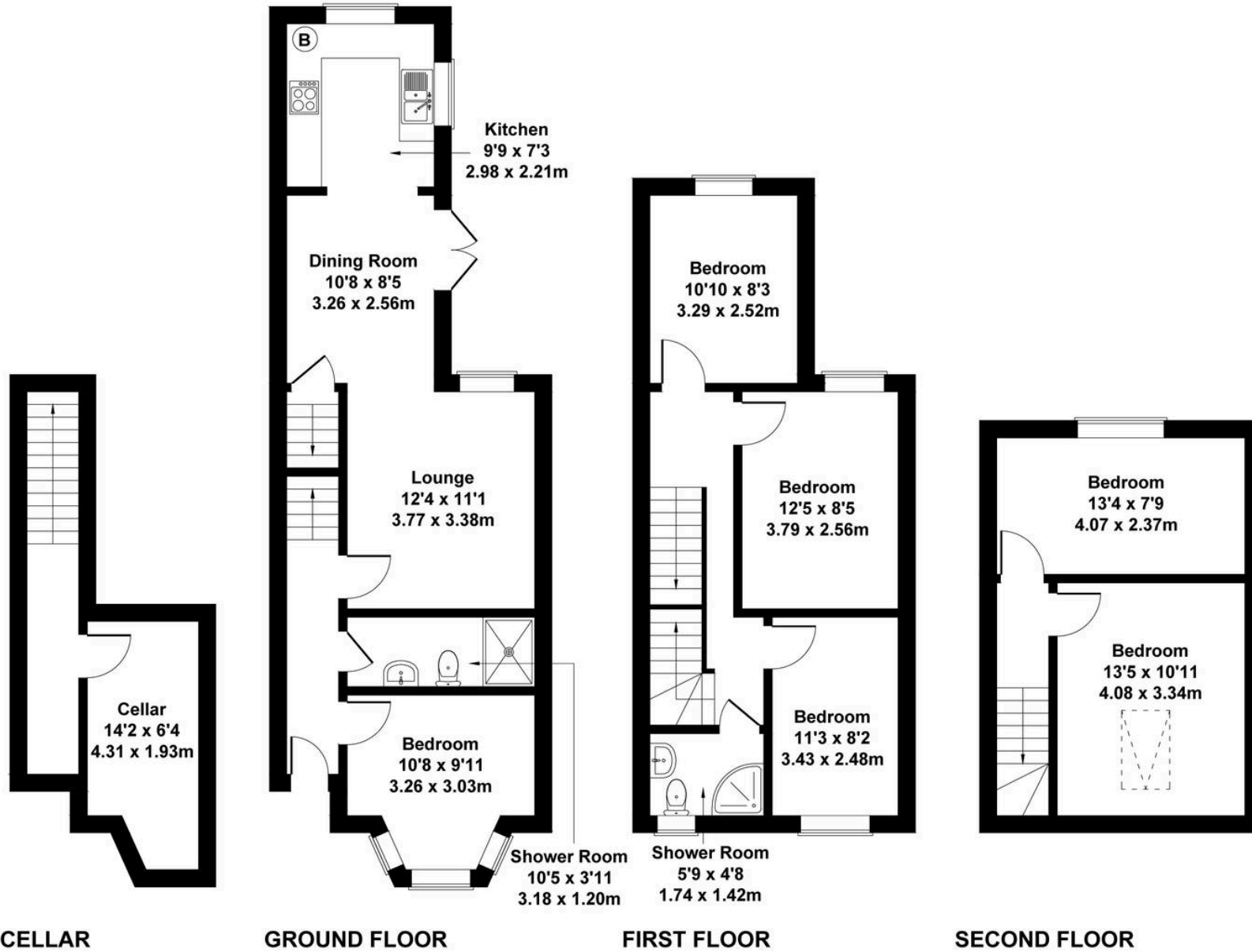
Located in the popular student area of Lenton, this property offers you easy access to both the Nottingham Trent University and the City Centre. Just a short walk from the Castle Retail Park, with supermarkets, gyms, and takeaway options nearby, this property is perfect if you are a student looking for convenience and a great location.





58 Teversal Avenue NG7 1PX

Approximate Gross Internal Area
1421 sq ft - 132 sq m



Not to Scale. Produced by The Plan Portal 2023
For Illustrative Purposes Only.



Comfort Estates

Comfort Estates, 47 Derby Road - NG1 5AW

0115 933 8997 • info@comfortestates.co.uk • www.comfortestates.co.uk