



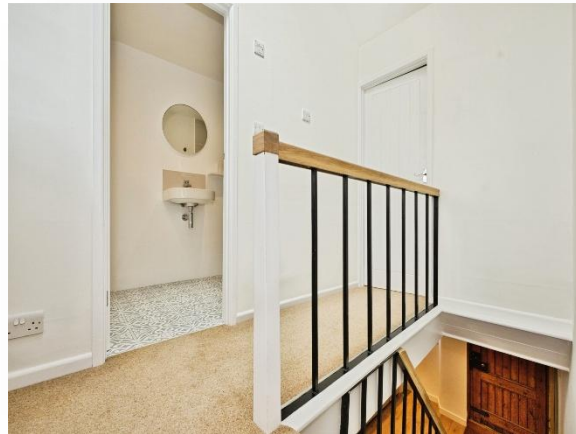
South Street, South Petherton TA13 5AE



welcome to

South Street, South Petherton

Nestled in the charming village of South Petherton in Somerset, this semi-detached cottage exudes character and comfort. Boasting 2 large double bedrooms and 1 single, the cottage is beautifully decorated throughout, blending traditional charm with modern touches.



Ground Floor

Kitchen

14' 5" x 9' 7" (4.39m x 2.92m)

Double glazed window to the front aspect. Hard flooring. Modern fitted kitchen comprising a range of wall and base units with work surfaces over. Inset sink with draining board. Integrated appliances include a built-in oven, gas hob with cooker hood and extractor fan.

Living Room / Diner

18' 6" x 10' 4" (5.64m x 3.15m)

A spacious and light-filled room featuring double glazed windows to the front and two to the side aspect. Door to the side providing access to the garden. The room boasts original features such as an original bread oven with a development opportunity to create an additional room with possible access either internally or externally. Exposed beams along with hard flooring, creating a charming yet practical living space.

Utility / Cloakroom

9' 7" x 4' 2" (2.92m x 1.27m)

Fitted with a WC and hand basin. Space and plumbing for appliances including a washing machine and dryer. Housing the boiler. Offers excellent storage opportunities.

First Floor

Landing

Bright and neutral space with a double glazed window to the rear aspect and a Velux skylight allowing for plenty of natural light. Radiator.

Bedroom One

10' 4" x 10' 4" (3.15m x 3.15m)

A large double bedroom with a double glazed window to the front aspect. A bright and airy room offering ample space and excellent storage. Radiator and carpeted flooring.

Bedroom Two

9' x 8' 3" (2.74m x 2.51m)

A good-sized double bedroom with a double glazed window to the front aspect. Excellent storage. Radiator and carpeted flooring.



view this property online fox-and-sons.co.uk/Property/CRK106660



Bedroom Three

7' 10" x 7' 10" (2.39m x 2.39m)

Well-proportioned bedroom with a peaceful outlook. Double glazed window to the side aspect. Radiator and carpeted flooring.

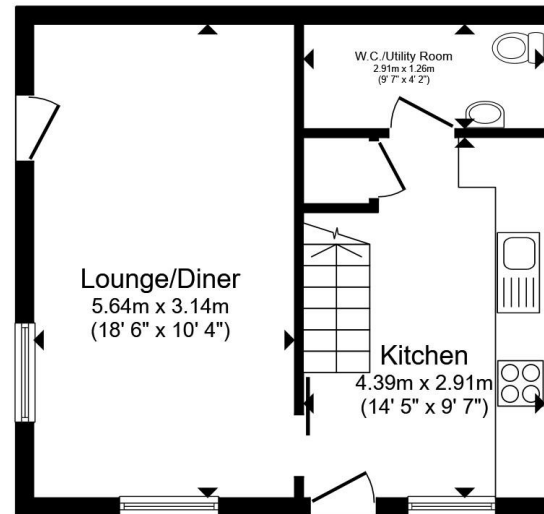
Shower Room

9' x 4' 7" (2.74m x 1.40m)

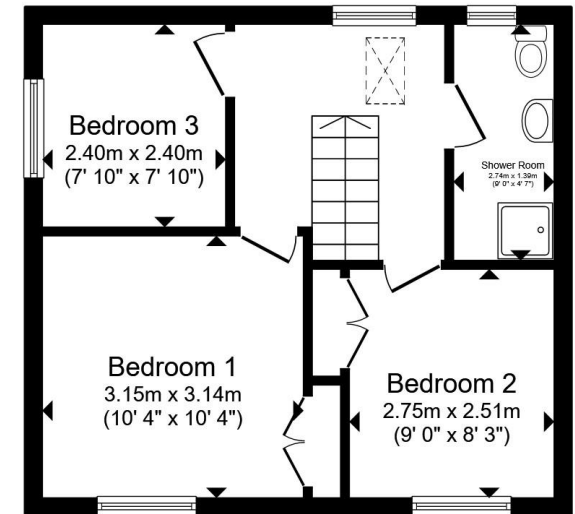
A recently fitted modern suite comprising a WC, hand basin and a walk-in shower. Part tiled walls and a heated towel rail.

Outdoor

The property enjoys a fully enclosed, private garden, mainly laid to lawn with lush grass. Along one side, there is a recently installed decked area, perfect for alfresco dining or relaxing in the sun. The garden also features a covered barbeque area and useful outbuilding shed, offering ample storage. At the front, a driveway provides off-road parking and includes a dual electric socket point, adding modern convenience to this tranquil outdoor space.



Ground Floor



First Floor

Total floor area 70.0 m² (753 sq.ft.) approx

This floor plan is for illustrative purposes only. It is not drawn to scale. Any measurements, floor areas (including any total floor area), openings and orientation are approximate. No details are guaranteed, they cannot be relied upon for any purpose and they do not form part of any agreement. No liability is taken for any error, omission or misstatement. A party must rely upon its own inspection(s). Powered by www.propertybox.io

 fox & sons

welcome to

South Street, South Petherton

- Semi-Detached Cottage
- Three Bedrooms
- Well Presented
- Living Room / Diner
- Under Floor Heating Throughout The Downstairs
- Enclosed South West Facing Rear Garden And Driveway Parking
- Sought After Village Location Close To Local Amenities

Tenure: Freehold EPC Rating: D

Council Tax Band: D

£375,000



Please note the marker reflects the postcode not the actual property

view this property online fox-and-sons.co.uk/Property/CRK106660



Property Ref:
CRK106660 - 0004

1. MONEY LAUNDERING REGULATIONS Intending purchasers will be asked to produce identification documentation at a later stage and we would ask for your co-operation in order that there is no delay in agreeing the sale. 2. These particulars do not constitute part or all of an offer or contract. 3. The measurements indicated are supplied for guidance only and as such must be considered incorrect. Potential buyers are advised to recheck measurements before committing to any expense. 4. We have not tested any apparatus, equipment, fixtures or services and it is in the buyers interest to check the working condition of any appliances. 5. Where an EPC, or a Home Report (Scotland only) is held for this property, it is available for inspection at the branch by appointment. If you require a printed version of a Home Report, you will need to pay a reasonable production charge reflecting printing and other costs. 6. We are not able to offer an opinion either written or verbal on the content of these reports and this must be obtained from your legal representative. 7. Whilst we take care in preparing these reports, a buyer should ensure that his/her legal representative confirms as soon as possible all matters relating to title including the extent and boundaries of the property and other important matters before exchange of contracts.

Fox & Sons is a trading name of Sequence (UK) Limited which is registered in England and Wales under company number 4268443, Registered Office is Cumbria House, 16-20 Hockliffe Street, Leighton Buzzard, Bedfordshire, LU7 1GN. VAT Registration Number is 500 2481 05.


fox & sons



01460 73421



Crewkerne@fox-and-sons.co.uk



1-3 Market Square, CREWKERNE, Somerset,
TA18 7LE



fox-and-sons.co.uk