



# Addison Avenue

W11

# Addison Avenue Holland Park, W11

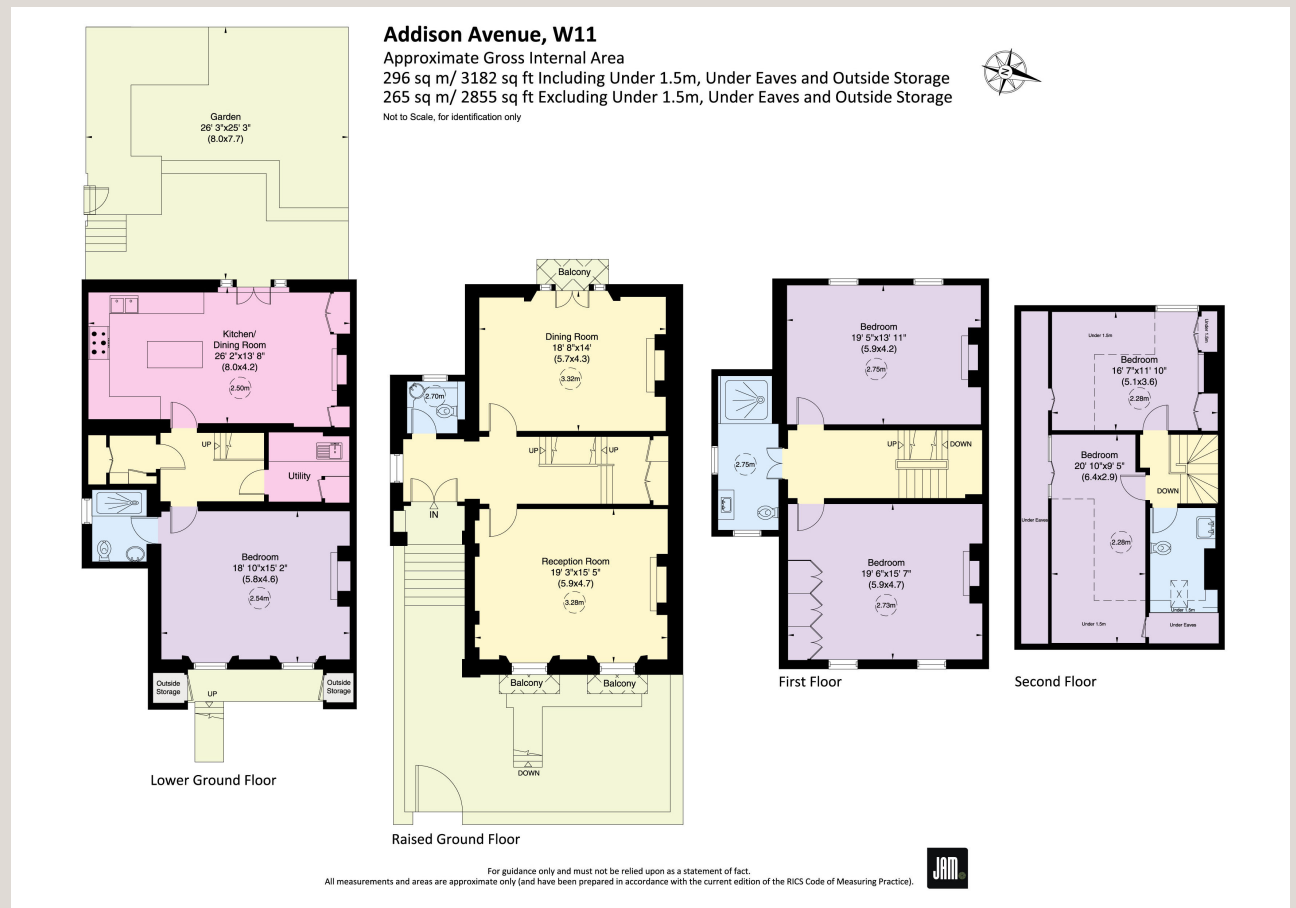
**A SUPERB FAMILY HOUSE IN ONE OF THE PRETTIEST STREETS IN LONDON.**

The accommodation comprises

- Drawing room & separate dining room
- Large kitchen / family room leading out to the west facing garden
- 5 double bedrooms
- 3 bathrooms
- Recently redecorated - inside and out

## Terms

<b>Rent</b>	£4,500 pw / £19,500 pcm
<b>Furniture</b>	Unfurnished
<b>Availability</b>	Immediately
<b>EPC Rating</b>	E
<b>Council Tax</b>	Band H



**JOHN WILCOX  
& Co.**  
 020 7602 2352  
[www.johnwilcox.co.uk](http://www.johnwilcox.co.uk)

For clarification purposes we wish to inform all interested parties that we have prepared these particulars as a general guide. We have not carried out a detailed survey nor tested the services, appliances and specific fittings. Room sizes should not be relied upon for carpets and furnishings