



## St. Peter's Close, SW17

**£1,450 PCM**

A well presented first floor one bedroom maisonette in a quiet residential cul-de-sac, suitable for a professional couple.

- First Floor Maisonette
- Open Plan
- One Bedroom
- Modern Bathroom
- Off Street Parking
- Close to Station

For further information on the costs associated with renting a property, please pop into our office or visit our website.

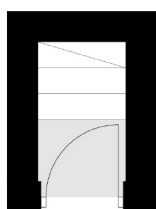
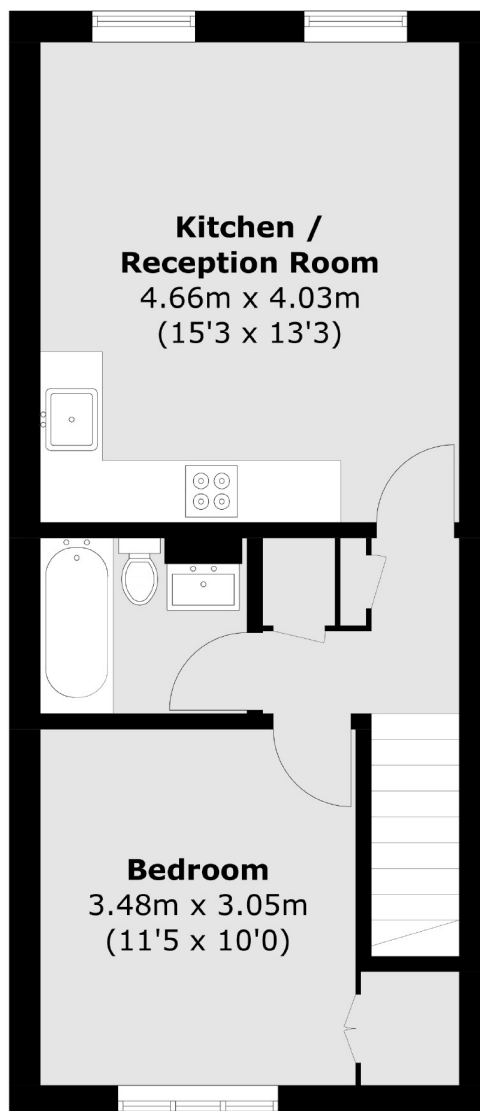




St Peters Close is located within easy reach of Tooting Bec Northern line and Wandsworth Common mainline stations. The property also benefits from off street parking.






**Ground Floor**

**First Floor**

Total area (approx.): 42.2 sq. m (454.2 sq. ft)

Jacksons Tooting  
26 Tooting Bec Road  
London  
SW17 8BD  
020 8767 0522  
[tooting.lettings@jacksonsestateagents.com](mailto:tooting.lettings@jacksonsestateagents.com)

Energy Rating: C We aim to make our particulars both accurate and reliable. However they are not guaranteed; nor do they form part of an offer or contract. If you require clarification on any points then please contact us, especially if you're traveling some distance to view. Please note that appliances and heating systems have not been tested and therefore no warranties can be given as to their good working order.