



Andonia Main Road, Cropthorne

£500,000 Freehold

Spacious four-bedroom detached bungalow on a third-acre plot in Cropthorne, with open views, large gardens, ample parking, and scope to update. Close to village amenities and countryside walks.

CHARLVE
CARROLL



Crothorne remains one of the Vale's most desirable villages, known for its welcoming community, riverside walks and easy access to Pershore, Evesham, Bredon Hill and the wider Cotswolds.

Council Tax band: F

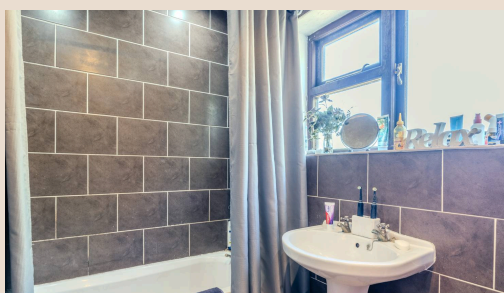
Tenure: Freehold

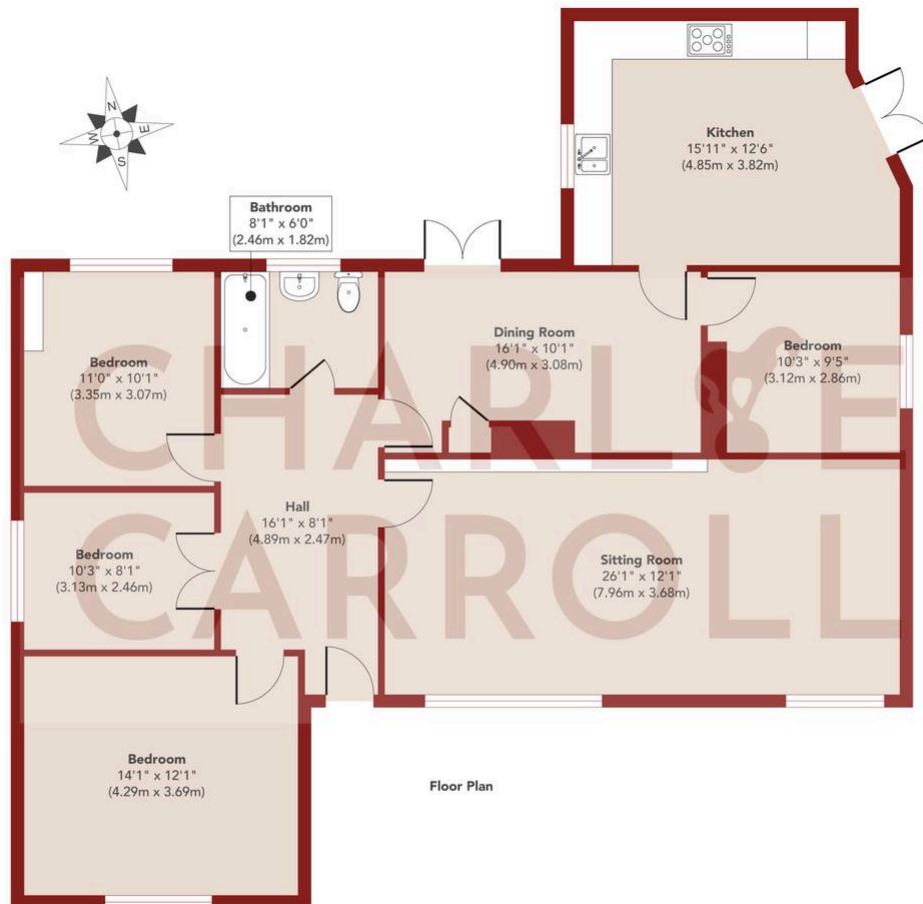
EPC Energy Efficiency Rating: E

EPC Environmental Impact Rating: E



- Four bedrooms
- Detached bungalow
- Third of an acre plot
- Potential to extend and improve
- Views to Bredon Hill
- Large driveway
- Two reception rooms
- Popular Crothorne village location





Approx. Gross Internal Floor Area 1319 sq. ft / 122.56 sq. m

Illustration for identification purposes only, measurements are approximate, not to scale
Produced by Elements Property