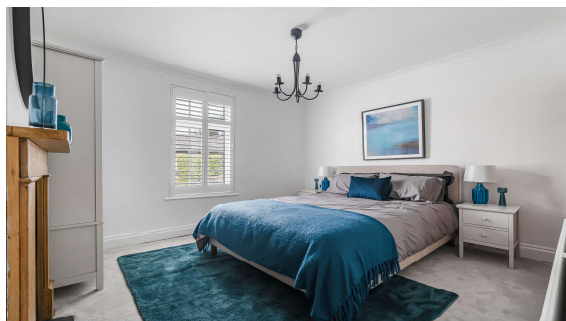




Strode Street, Egham, Surrey, TW20 9BX

£425,000 F/H



A beautifully presented two bedroom Victorian end terrace property located in the heart of Central Egham just yards from High Street amenities, Magna Square and mainline train station. Accommodation comprises entrance hallway, two reception rooms, modern fitted kitchen, luxury bathroom suite and a mature landscaped private rear garden. No onward chain.

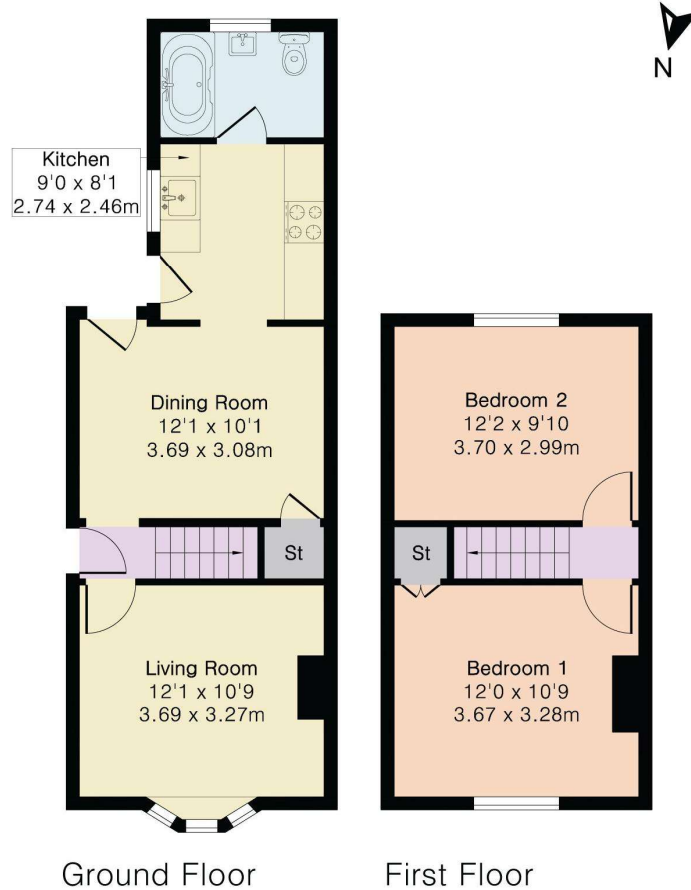
Strode Street, Egham, Surrey, TW20 9BX

FLOOR PLAN

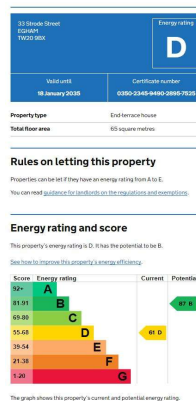
Approximate Gross Internal Area 707 sq ft - 66 sq m

Ground Floor Area 417 sq ft – 39 sq m

First Floor Area 290 sq ft – 27 sq m



EPC



COUNCIL TAX BAND:

C - Runnymede Borough Council

VIEWINGS:

By appointment with the clients selling agents,
Nevin & Wells Residential on 01784 437 437 or visit
www.nevinandwells.co.uk



All measurements are approximate. Nevin & Wells Residential have not tested any systems or appliances.