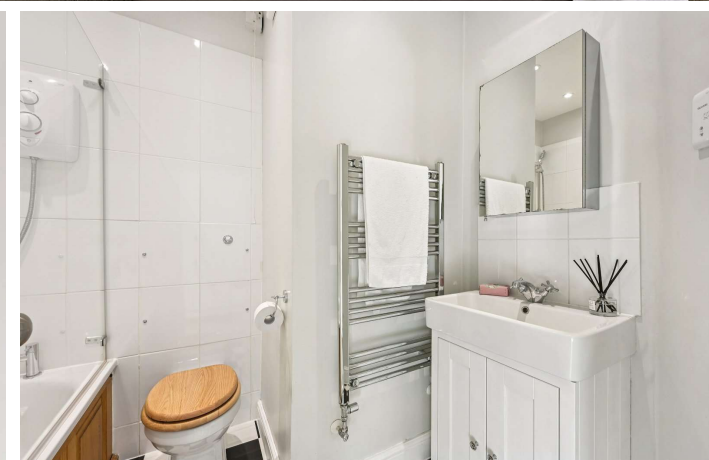




St. Georges Drive  
London, SW1V

CHESTERTONS





Situated on the third floor of an elegant period conversion with the benefit of lift access, this immaculately presented apartment is located on the ever-popular St George's Drive and enjoys an abundance of natural light throughout.

The property is presented in good condition and features an attractive reception/dining room, offering a bright and inviting space ideal for both relaxing and entertaining. Just off the reception, a modern and well-equipped kitchen is fitted with integrated appliances and finished to a good standard, with direct access onto a delightful south-west facing private terrace—perfect for enjoying the afternoon and evening sun.

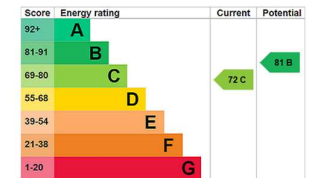
The apartment further comprises a generous double bedroom complete with a walk-in wardrobe, providing excellent storage, and a well-appointed bathroom.

Combining period charm with contemporary living, this appealing flat makes an ideal home for professionals, first-time buyers, or investors, all set within a highly sought-after central location.

St Georges Drive is conveniently located for the shops, cafes and restaurants of Pimlico and Victoria Street and benefits from excellent transport links of Victoria (Victoria, Circle and District underground lines, Mainline station and Gatwick Express).

- A Stunning, Very Bright Third Floor Flat with Lift
- One Large Double Bedroom
- A Light Reception Dining Room
- Modern Kitchen
- Private South West Facing Balcony
- Share of Freehold

Asking Price £600,000



**Tenure:** Share of Freehold 982 years 9 months (Lease expires on 1<sup>st</sup> January 3009)

**Service Charge:** £7,000 (Includes a contribution to the sinking fund)

**Ground Rent:** £0

**Local Authority:** City of Westminster

**Council Tax Band:** E

*Chestertons Westminster & Pimlico Sales*

105 Wilton Road

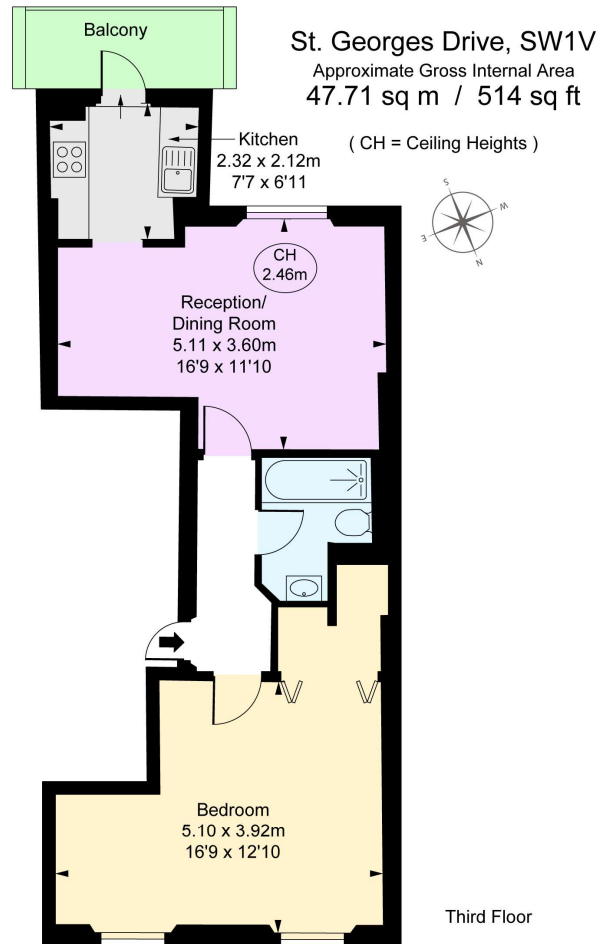
London

SW1V 1DZ

westminster@chestertons.co.uk

020 3040 8201

chestertons.co.uk



This plan is not to a given scale. A detailed layout plan to scale for validation is available on request. All measurements and areas are within the tolerance and have been prepared in accordance with industry standards as defined in the NIS Code of Measuring Practice

© Fulham Performance

Chesterton UK Services Limited trading as Chestertons for themselves and for the vendor of this property whose agents they are, give notice that (i) these particulars do not constitute any part of an offer or contract, (ii) all statements contained within these particulars are made without responsibility on the part of Chestertons or the vendor, (iii) whilst made in good faith, none of the statements contained within these particulars are to be relied upon as a statement or representation of fact, (iv) any intending purchasers must satisfy themselves by inspection or otherwise as to the correctness of each of the statements contained within these particulars, (v) the vendor does not make or give either Chestertons or any person in their employment any authority to make or give representation or warranty whatsoever in relation to this property. Wide angle lenses may be used. ©Copyright Chestertons | Chesterton UK Services Limited | Registered Office 40 Connaught Street, Hyde Park, London W2 2AB Registered Company Number 05334580.



This paper is  
 100% recyclable