



St. James Gardens, Bedlington, NE22 5SD

Offers Over £340,000

**Harpers** | POWERED BY **exp** UK  
property people



**Bedrooms: 4 | Bathrooms: 2 | Receptions: 3**

Beautifully positioned on a prestigious corner plot overlooking The 20 Acres, this superb four double bedroom detached family home offers generous internal space, a wonderful outlook and a highly desirable setting within a fantastic residential location. The home features four spacious double bedrooms, served by a family bathroom and a modern en-suite shower room to the principal bedroom. To the side, a bright bay-fronted living room provides a welcoming place to relax, while a separate home office is ideal for modern working life. At the heart of the property is a generous kitchen/diner, perfect for family meals and entertaining, supported by a separate utility room and ground floor WC for added convenience. Externally, the home enjoys a South-facing rear garden, ideal for sunny days and outdoor living. A detached garage and double driveway provide excellent parking and storage, while the open views across The 20 Acres truly set this home apart. Combining space, outlook, practicality and location, this is a standout family home in one of the area's most sought-after settings.

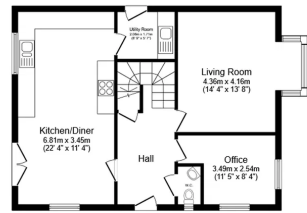
- Detached Family Home
- Four Double Bedrooms
- Family Bathroom & En-Suite Shower
- Generous Kitchen/Diner
- Bay Fronted Living Room + Home Office
- Separate Utility Room & WC
- South Facing Garden
- Detached Garage & Double Driveway



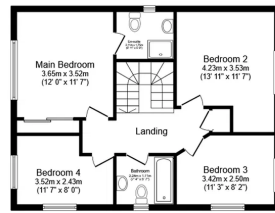




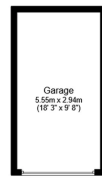




**Ground Floor**  
Floor area 62.9 sq.m. (677 sq.ft.)



**First Floor**  
Floor area 61.7 sq.m. (664 sq.ft.)



**Garage**  
Floor area 16.3 sq.m. (176 sq.ft.)

Total floor area: 140.9 sq.m. (1,517 sq.ft.)

This floor plan is for illustrative purposes only. It is not drawn to scale. Any measurements, floor areas (including any total floor area), openings and orientations are approximations. No details are guaranteed, they cannot be relied upon for any purpose and do not form any part of any agreement. No liability is taken for any error, omission or misstatement. A party must rely upon its own inspection(s). Powered by [www.propertybox.co.uk](https://www.propertybox.co.uk)

**Harpers**exp UK

**Harpers Property People**

80 Windsor Gardens, Bedlington, NE22 5SY

07813 673 606

ali@harpersproperty.com

<https://harpersproperty.com>

**Harpers**exp POWERED BY **property people** UK