

Franklyn James



Hesperus Crescent

, London, E14 3AD

£550,000

Positioned on a well-connected and highly sought-after residential street, this substantial two-bedroom terraced home offers an exciting opportunity to create a truly exceptional family residence. Boasting generous accommodation arranged over multiple levels, the property is perfectly suited to buyers seeking space, versatility and the chance to add their own stamp.

A standout feature is the master bedroom, complete with a staircase leading to a useful loft room, providing valuable additional space with a variety of potential uses. The ground floor also benefits from a conservatory that extends the living accommodation.

Another feature is the ground floor shower room which is in addition to a first-floor family bathroom, enhancing practicality for modern family living.

Offering excellent scope for refurbishment and reconfiguration, the property presents an ideal opportunity for owner-occupiers, investors and developers alike to unlock its full potential and maximise its generous footprint.

Ideally situated on Hesperus Crescent, Mudchute DLR station is within easy walking distance, providing fast and convenient access to Canary Wharf, the City and beyond.

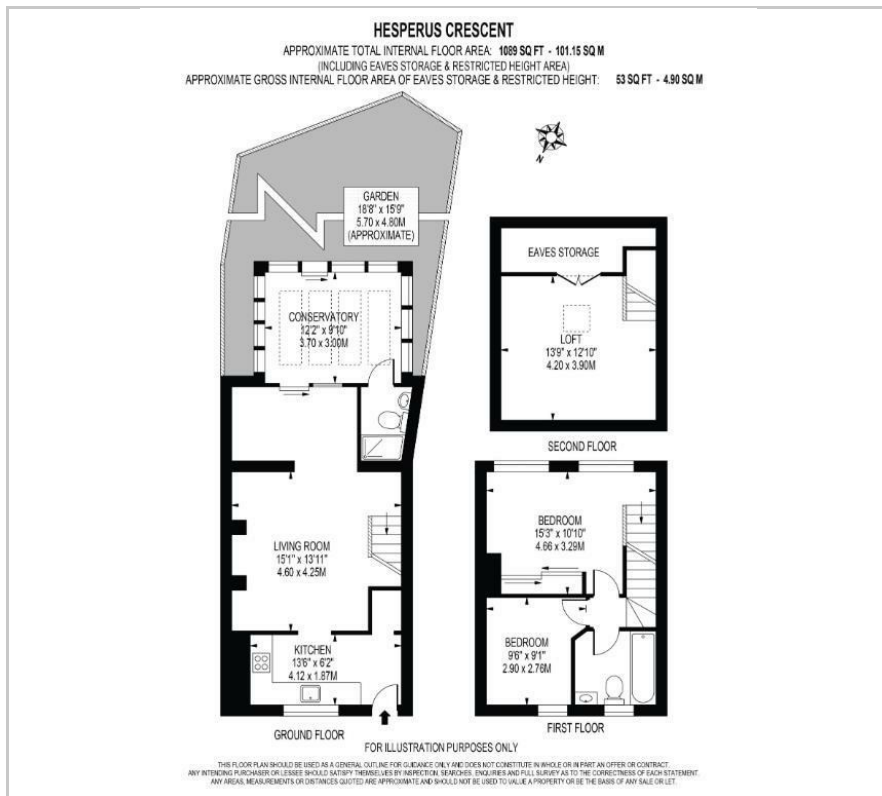
- Chain free
- permit parking
- conservatory
- 2 bedrooms plus a loft room
- Garden
- Gas central heating

Viewing

Please contact our Limehouse Sales Office on 02077911777 if you wish to arrange a viewing appointment for this property or require further information.



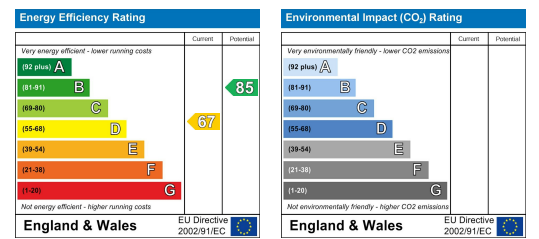
Floor Plan



Area Map



Energy Efficiency Graph



These particulars, whilst believed to be accurate are set out as a general outline only for guidance and do not constitute any part of an offer or contract. Intending purchasers should not rely on them as statements of representation of fact, but must satisfy themselves by inspection or otherwise as to their accuracy. No person in this firm's employment has the authority to make or give any representation or warranty in respect of the property.