



19 Salwick Close

Goose Green, Wigan, WN3 6RE

£895 PCM



Sapphire Homes are delighted to offer For Rent this well presented two bedroom semi detached house situated in the popular residential area of Goose Green offering close proximity to local amenities, schools and transport links including a short drive to Junction 25 of the M6 Motorway The accommodation briefly comprises of: entrance / hallway, W.C., lounge and to the rear there is a fitted kitchen / diner with French doors leading to the rear garden. To the first floor the landing provides access to two generous bedrooms and family bathroom with three piece suite in white and shower over bath. The property also benefits from being warmed by gas central heating, double glazing, driveway providing off road parking for 2 cars and gardens to the front and to the rear. Would make an ideal home for professional, couple or small family. Early internal viewings are highly recommended to appreciate this property in full.



GROUND FLOOR

Entrance / Hallway

W.C.

Lounge

Kitchen / Diner

FIRST FLOOR

Landing

Bedroom 1

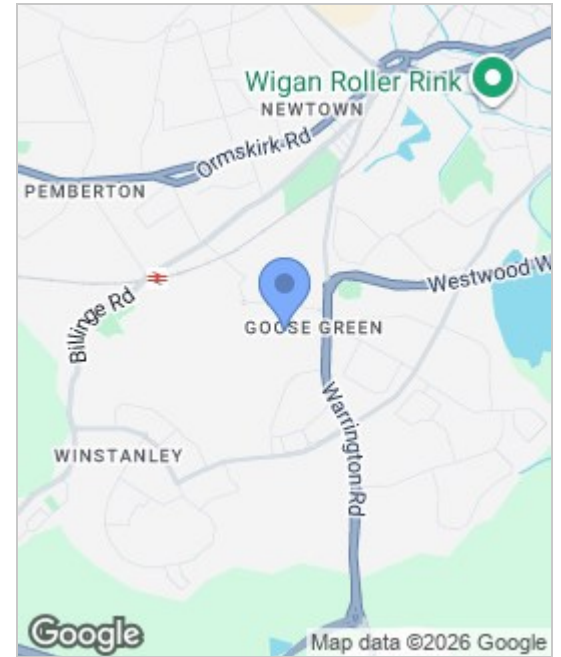
Bedroom 2

Bathroom

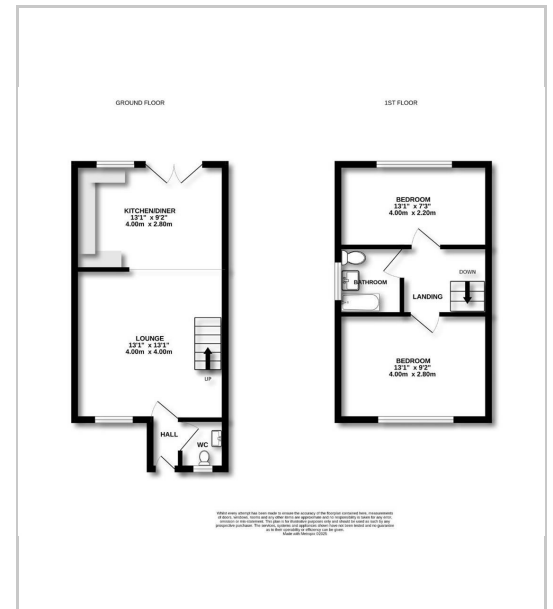
EXTERNAL

Rear Garden

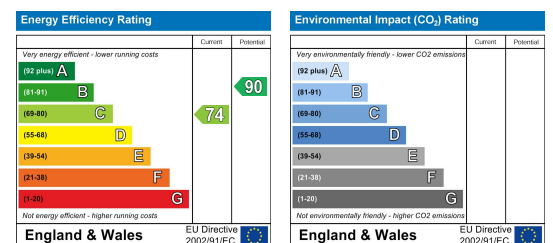
Area Map



Floor Plans



Energy Efficiency Graph



These particulars, whilst believed to be accurate are set out as a general outline only for guidance and do not constitute any part of an offer or contract. Intending purchasers should not rely on the representation of fact, but must satisfy themselves by inspection or otherwise as to their accuracy. No person in this firm's employment has the authority to make or give any representation or warranty in relation to the property.



Sapphire Homes (North) Ltd 80 Market Street, Wigan WNI 1HX
 T 01942 494944 E info@sapphirehomes.co.uk W www.sapphirehomes.co.uk VAT 183 759 366

specialists in sales, Lettings & Property Investments