



## Queens Court

Watford, WD17 2NX

**£1,300 PCM**

Spacious one-bedroom ground floor apartment in the heart of Watford town centre. This stylish home offers modern living with excellent access to local amenities, transport links, and green spaces. Benefits include a private parking space, secure entry system, and access to a well-maintained communal garden. Available July. Contact us today to arrange a viewing.

- One double bedroom
- Ground floor apartment
- Spacious living room
- Modern kitchen in great condition
- Modern shower room in great condition
- Council Tax Band B
- Private permit parking
- Communal garden
- Holding deposit £300.00
- Available July

### Viewing

Please contact our Watford Office on 01923224030 if you wish to arrange a viewing appointment for this property or require further information.



1



1

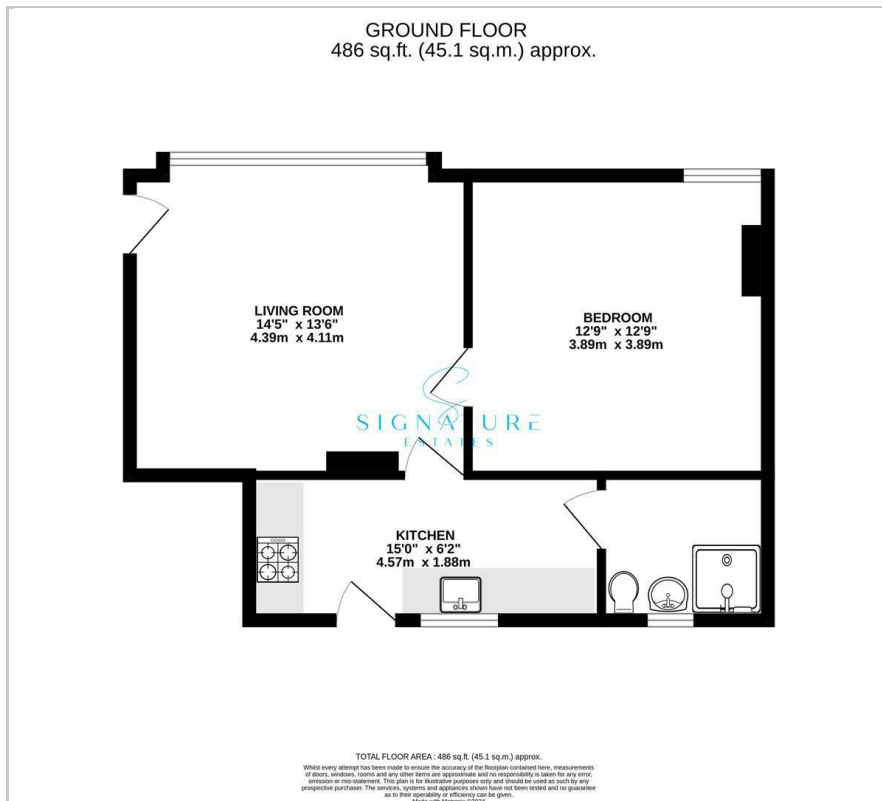


1



D

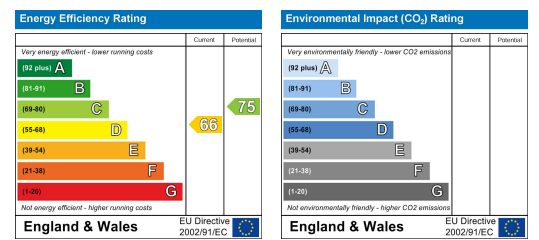
# Floor Plan



# Area Map



# Energy Efficiency Graph



These particulars, whilst believed to be accurate are set out as a general outline only for guidance and do not constitute any part of an offer or contract. Intending purchasers should not rely on them as statements of representation of fact, but must satisfy themselves by inspection or otherwise as to their accuracy. No person in this firm's employment has the authority to make or give any representation or warranty in respect of the property.