

Acorn Grove

Ruislip • Middlesex • HA4 6PL

Guide Price: £600,000



coopers
est 1986

Acorn Grove

Ruislip • Middlesex • HA4 6PL

Situated in a quiet residential cul-de-sac, this well-proportioned three-bedroom semi-detached family home offers approximately 962 sq. ft. of internal living accommodation and presents an excellent opportunity for families, first-time buyers, and movers alike. The ground floor comprises a welcoming entrance hall with guest cloakroom, a fitted kitchen overlooking the side aspect and garden as well as a spacious open-plan living and dining room extending the full depth of the property. The bright and airy reception space benefits from a large bay window to the front and double doors to the back, leading directly onto the rear garden, creating an ideal setting for both everyday family living and entertaining. To the first floor are three well-proportioned bedrooms, including two generous double bedrooms and a comfortable single bedroom, all served by a family bathroom with separate bath and shower. Externally, the property enjoys a private, south facing rear garden and benefits from three useful external storage rooms, providing excellent space for bicycles, gardening equipment, or general household storage. Acorn Grove is conveniently located within easy reach of local shops, schools, parks, and transport links, including Ruislip Gardens Station (Central Line) and South Ruislip Station, offering excellent connections into Central London and beyond.

SEMI DETACHED HOUSE

THREE BEDROOMS

LARGE RECEPTION ROOM

SPACIOUS KITCHEN

FAMILY BATHROOM

SOUTH FACING GARDEN

DRIVEWAY

QUIET ROAD

POTENTIAL TO EXTEND (STPP)

962 SQ.FT.

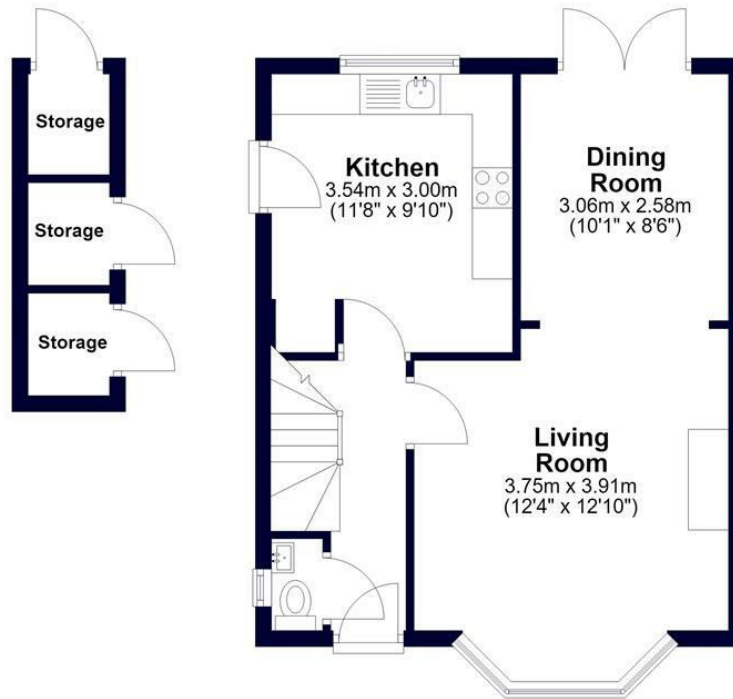
These particulars are intended as a guide and must not be relied upon as statements of fact. Your attention is drawn to the Important Notice on the last page.





Ground Floor

Approx. 47.2 sq. metres (507.8 sq. feet)
(excluding Storage, Storage, Storage)



First Floor

Approx. 42.2 sq. metres (453.9 sq. feet)



Total area: approx. 89.3 sq. metres (961.7 sq. feet)

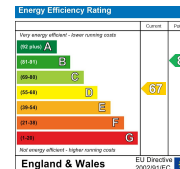


Whilst every effort has been made to ensure the accuracy of this floor plan, measurements of doors, windows, rooms and other items are approximate and no responsibility is taken for any errors. This plan is for illustrative purposes only and should be used as such by any prospective purchaser.
©Property Pot. Produced on behalf of Coopers Residential.



71 Victoria Road, Ruislip Manor,
Middlesex, HA4 9BH
ruislipmanor@coopersresidential.co.uk

CoopersResidential.co.uk



Important Notice: These particulars, whilst believed to be accurate are set out as a general outline only for guidance and do not constitute any part of an offer or contract. Intending purchasers should not rely on them as statements or representation of fact, but must satisfy themselves by inspection or otherwise has the authority to make or give any representation or warranty in respect of the property.