

Elstree Way, WD6





Elstree Way, WD6

A stylish and spacious two-bedroom first floor apartment set within a highly regarded modern development, combining contemporary design with excellent resident facilities.

FOR SALE
LEASEHOLD

2 BED
APARTMENT

(57 SQ M)
614 SQ FT



Daniel Levine

📞 07702 733 091

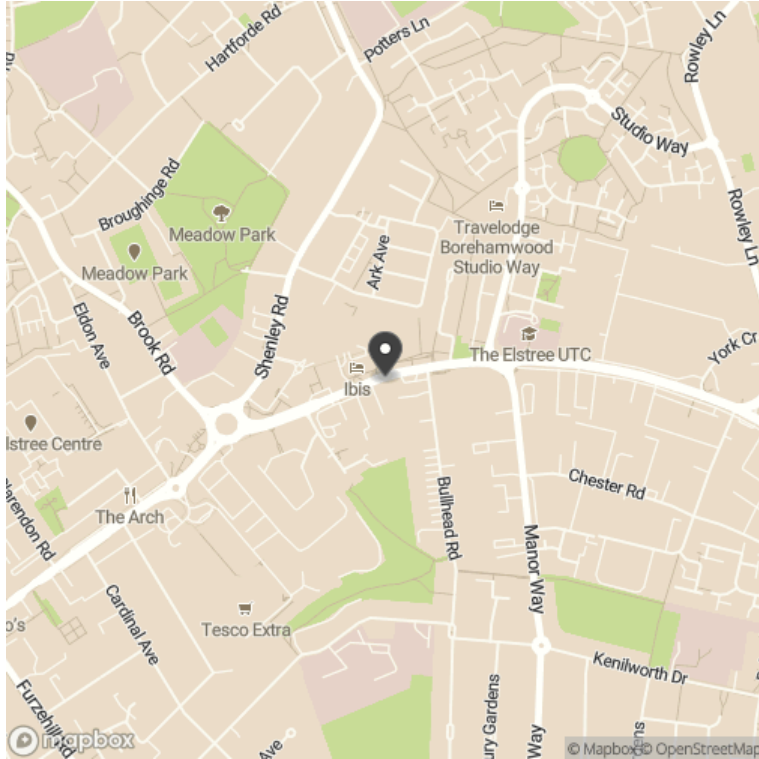
☎ 020 4632 9430

✉ dlevine@moveli.co.uk

DETAILS

- Two Double Bedrooms
- Spacious Private Balcony
- Modern Open-Plan Living
- Residents' Gym & Concierge
- Allocated Parking & CCTV
- Chain Free

LOCATION



Important notice: Moveli give notice that: all text, photographs and plans on these brochure are for guidance only and are not necessarily comprehensive; any areas, measurements or distances given are approximate; these details do not constitute part of an offer or contract and must not be relied upon as statements or representations of fact; it should not be assumed that the property has all the necessary planning permissions and building regulations approvals; we are not authorised to give any representations or warranties in relation to this property whatsoever; potential purchasers must satisfy themselves as to the correctness of all details by inspection or otherwise. Alpinum Limited T/A Moveli, Brewery Farm, Old Coach Road, Axbridge, Somerset BS26 2EH Tel: 020 3150 0733 Email: hello@moveli.com

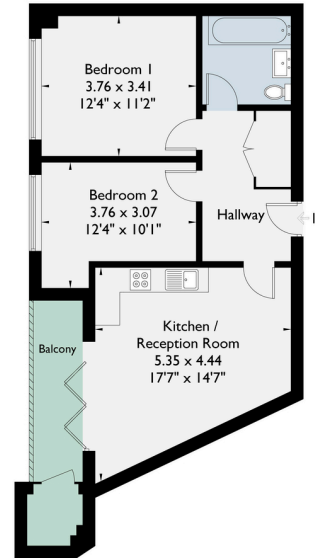
FLOOR PLAN

614 sq ft (57 sq m)

Elstree House WD6

Approximate Gross Internal Area = 57.1 sq m / 614 sq ft

DANIEL LEVINE PROPERTY | MOVELI



This plan is not to scale and must be used as layout guidance only. All measurements and areas are approximate and should not be relied upon to provide accurate information. This plan must not be relied upon when making property valuations, design considerations or any other such relevant decisions. We accept no responsibility or liability (whether in contract, tort or otherwise) in relation to any loss whatsoever arising from or in connection with any use of this plan or the adequacy, accuracy or completeness of it or any information within it.



Daniel Levine

For viewings, further information or a free property valuation contact:

☎ 07702 733 091 | 020 4632 9430

✉ dlevine@movel.co.uk

