



# Olive

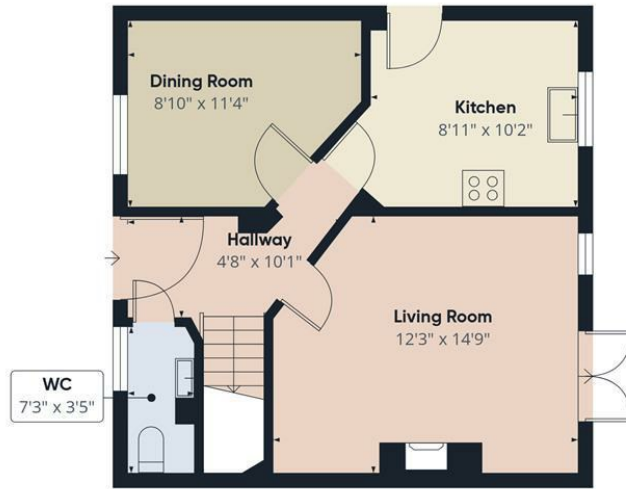
ESTATE AGENTS



## 60 Gielgud Close, Burnham-On-Sea, TA8 1RH £330,000

\*\*\* IMMACULATE, LIGHT AND AIRY DETACHED FAMILY HOME OVERLOOKING THE NEIGHBOURING FIELDS AND FARMLAND \*\*\* MODERN ACCOMMODATION THROUGHOUT \*\*\* GARAGE AND OFF STREET PARKING FOR TWO VEHICLES \*\*\* LIVING ROOM \*\*\* DINING ROOM \*\*\* KITCHEN \*\*\* CLOAKROOM \*\*\* THREE BEDROOMS \*\*\* MASTER EN-SUITE \*\*\* FAMILY BATHROOM \*\*\* EPC C \*\*\* COUNCIL TAX BAND D \*\*\* FREEHOLD \*\*\*





Floor 0



Floor 1

Approximate total area<sup>(1)</sup>  
861 ft<sup>2</sup>

(1) Excluding balconies and terraces

Calculations reference the RICS IPMS 3C standard. Measurements are approximate and not to scale. This floor plan is intended for illustration only.

GIRAFFE360

