



Flat 37, Strand Court Strand Quay, Rye  
£150,000





## Flat 37

Strand Court Strand Quay, Rye

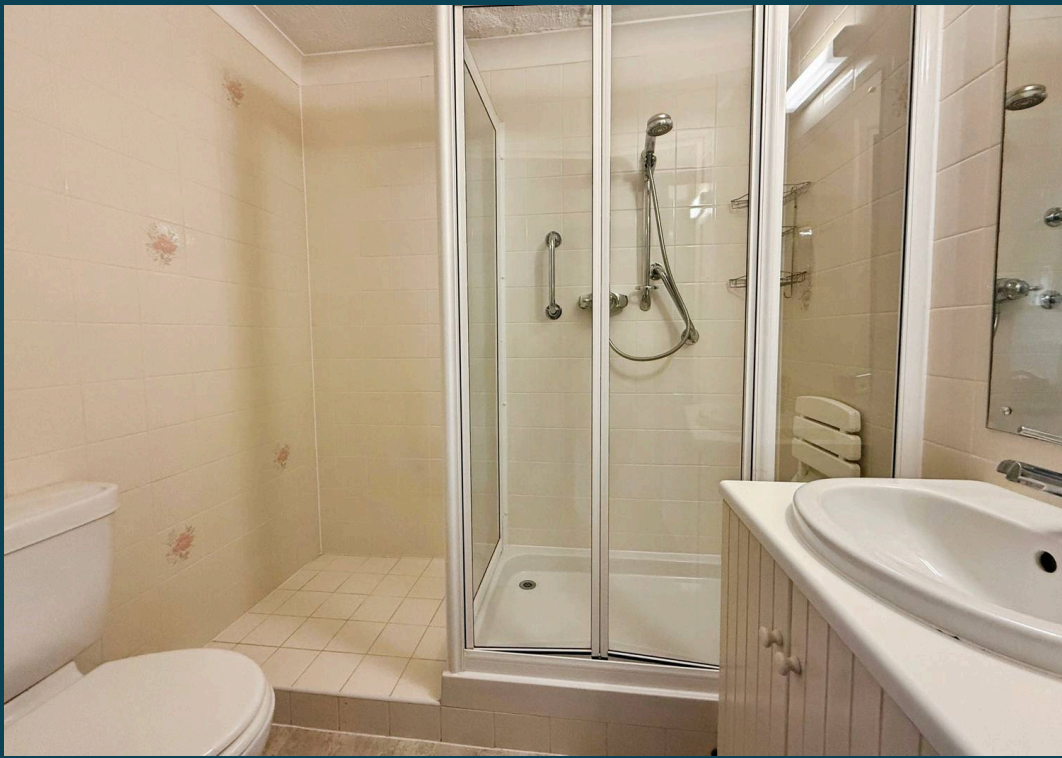
Council Tax band: C

Tenure: Leasehold

EPC Energy Efficiency Rating: B

EPC Environmental Impact Rating:

- Chain Free
- Located A Short Distance to the Lift
- Rye Town Centre
- Second Floor Apartment
- Views Towards Strand Quay
- Suitable for Those Aged Over 60
- On-Site House Manager & Care Line System with Emergency Pull Cord
- Communal Living Room, Laundry Room, Garden & Courtyard







Floor Plan

This floor plan is for illustrative purposes only. It is not drawn to scale. Any measurements, floor areas (including any total floor area), openings and orientations are approximate. No details are guaranteed, they cannot be relied upon for any purpose and do not form any part of any agreement. No liability is taken for any error, omission or misstatement. A party must rely upon its own inspection(s). Powered by [www.Propertybox.io](http://www.Propertybox.io)



## Nested Rye

01797 903045 • [barnaby.osborne@nested.com](mailto:barnaby.osborne@nested.com) • [nested.com/barnaby-osborne](https://nested.com/barnaby-osborne)