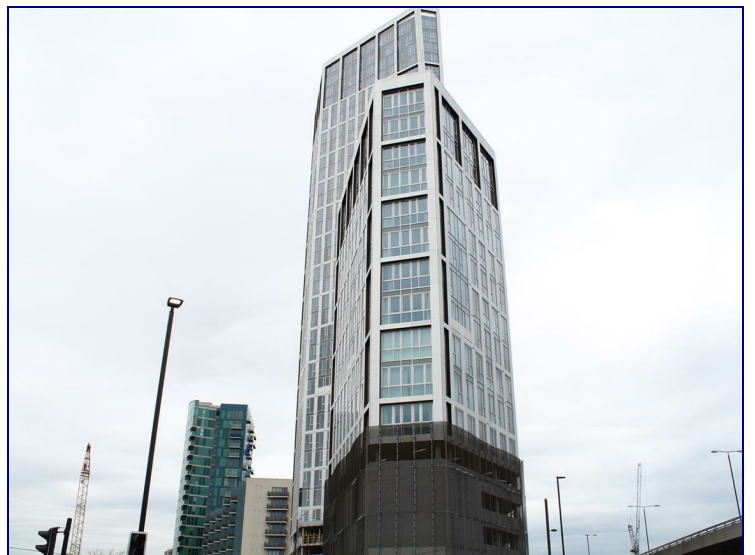




[www.kings-group.net](http://www.kings-group.net)

326 Mare Street  
London E8 1HA  
Tel: 0208 510 0808

**High Street, London, E15 2PP**



**£2,000 Per Month**

**\*\*LUXURY NEW BUILD ONE BED TWO BATH\*\*** This stunning apartment is set within the very popular Galliard Homes development CAPITAL TOWERS, which offers RESIDENT GYMNASIUM, 24 hours concierge, ROOF TERRACE, private underground parking space. The flat benefits a spacious and bright open plan Kitchen/Lounge with floor to ceiling windows offering an extraordinary view of Canary Wharf, a large double bedroom with ENSUITE BATHROOM and a big built-in wardrobe, an extra guest toilet. The proeprty is situated on Stratford High Street and is walking distance from Pudding Mill Lane DLR Station and Bromley-By-Bow Station offering easy access to Stratford, Canary Wharf, the City and Central London.  
**CALL NOW TO AVOID DISAPPOINTMENT!!!**





For illustrative purposes only. Not to scale

Whilst every attempt has been made to ensure the accuracy of the floor plan, all measurements are approximate and no responsibility is taken for any error, omission or misstatement. Bright Logic Limited 01451 824500.

Energy Efficiency Rating		Current	Potential
Very energy efficient - lower running costs			
(92 plus) <b>A</b>			
(81-91) <b>B</b>			
(69-80) <b>C</b>			
(55-68) <b>D</b>			
(39-54) <b>E</b>			
(21-38) <b>F</b>			
(1-20) <b>G</b>			
Not energy efficient - higher running costs			
<b>England &amp; Wales</b>	EU Directive 2002/91/EC		

Environmental Impact (CO <sub>2</sub> ) Rating		Current	Potential
Very environmentally friendly - lower CO <sub>2</sub> emissions			
(92 plus) <b>A</b>			
(81-91) <b>B</b>			
(69-80) <b>C</b>			
(55-68) <b>D</b>			
(39-54) <b>E</b>			
(21-38) <b>F</b>			
(1-20) <b>G</b>			
Not environmentally friendly - higher CO <sub>2</sub> emissions			
<b>England &amp; Wales</b>	EU Directive 2002/91/EC		



Associated Offices in London, Essex and Hertfordshire  
 Kings Head Office Tudor Lodge, Burton Lane, Goffs Oak, Hertfordshire EN7 6SY Tel: 01707-872000

