



Bishops Bridge Road, W2

£1,395 Per week

Dexters



Bishops Bridge Road, W2

SHORT LET - A stunning, first floor two bedroom apartment with high ceilings and a private terrace. With wooden floors and two bathrooms, this impressive property has been refurnished to a very high standard.

Layout includes an open plan reception with built in storage, a large bay window and space to dine. The modern kitchen with breakfast bar is complete with dishwasher and high end appliances.

With floor to ceiling windows, the property is fitted with air conditioning, built in speakers and underfloor heating. Both bathrooms are modern and the en suite to master has a tub and the family bathroom has a walk in shower.

The large wrap around terrace is the perfect space to enjoy a summers afternoon and the property would ideally suit those looking for a modern spec with plenty of period charm in a great location.

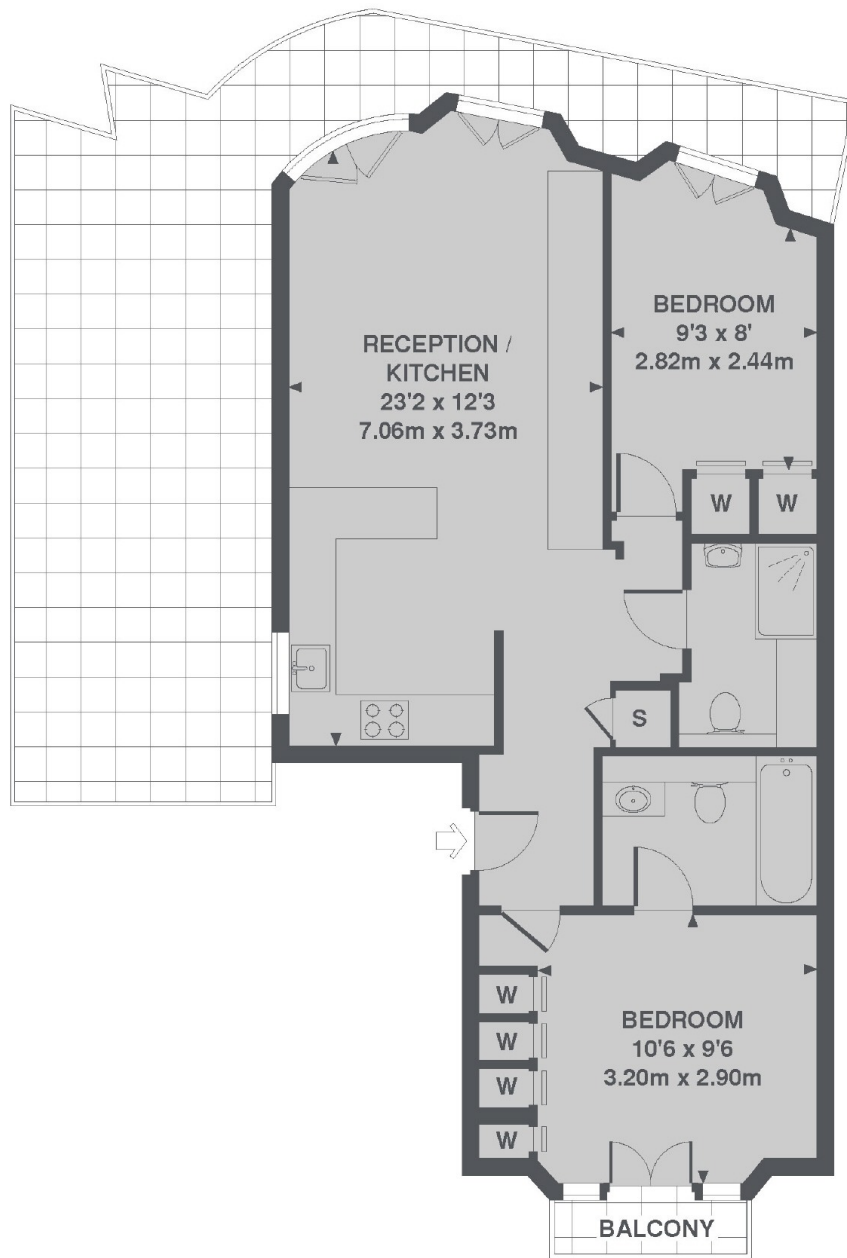
The property is ideally located for Paddington (Bakerloo, Circle, District and Hammersmith & City Lines) underground and main line stations including the Heathrow Express.

Features

- Two Bedrooms
- Two Bathrooms
- High Ceilings
- Large Terrace
- Modern
- Storage



Bishops Bridge Road, London, W2



1ST FLOOR

TOTAL APPROX. FLOOR AREA 677 SQ. FT. (62.9 SQ. M.)

Dexters

Hyde Park and Bayswater
4-5 Spring Street
London
W2 3RA
Lettings
020 7298 1560

Energy Rating: D. We aim to make our particulars both accurate and reliable. However they are not guaranteed; nor do they form part of an offer or contract. If you require clarification on any points then please contact us, especially if you're traveling some distance to view. Please note that appliances and heating systems have not been tested and therefore no warranties can be given as to their good working order.

 **RICS** | Regulated
Estate Agent
and Letting Agent

[dexters.co.uk](https://www.dexters.co.uk)