

2 Bawn Path Leeds



3 Bedroom House - Semi-Detached £149,995

69 Lower Wortley Road
Wortley
Leeds
West Yorkshire
LS12 4SL
Tel: 0113 231 1033
Fax: 0113 203 8333

Web Site
www.kathwells.com

email
sales@kathwells.com

2 Bawn Path, Leeds, LS12 5QX

GROUND FLOOR:

Entrance Vestibule:

Entrance via a part glazed front entrance door, double glazed window

Fitted Dining Kitchen:



Part glazed rear door, double glazed window, a range of fitted wall, drawer & base units, work surfaces, electric hob, extractor fan above, a built under oven / grill, inset sink & drainer, plumbing for an automatic washing machine, ample space for a fridge / freezer, stairs rising to the first floor, a wall mounted electric heater, ample space for a dining table & chairs

Living Room:



Double glazed window, a wall mounted electric heater, fire place & hearth, ample space for a range of living room furniture

FIRST FLOOR:

Landing:



Double glazed window, access to the first floor accommodation, a wall mounted electric heater

Bedroom One:



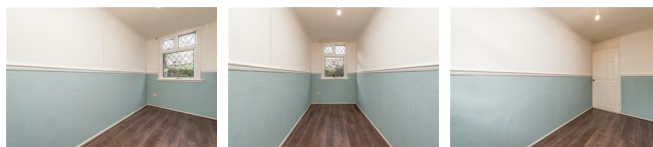
Double glazed window, fitted wardrobes / storage

Bedroom Two:



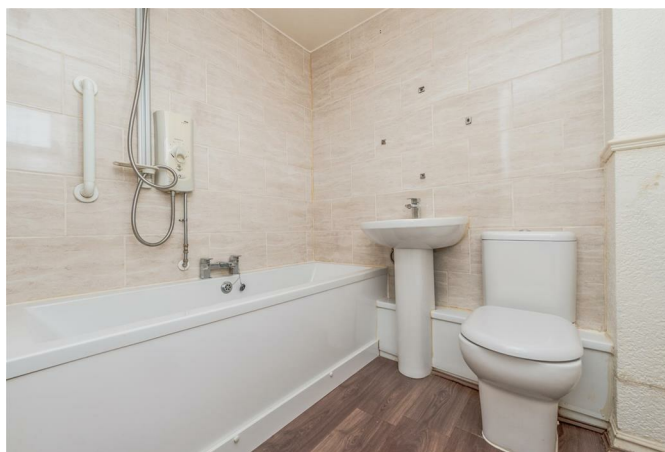
Double glazed window, fitted wardrobes / storage

Bedroom Three:



Double glazed window, a good sized single bedroom

Bathroom / WC:



Double glazed window, a white suite comprising of a panelled bath with an electric shower above, low flush WC, wash basin, towel railing

TO THE OUTSIDE:



Gardens:



The rear garden comprises of a good sized lawn & patio, as well as being fully enclosed. The front garden is fully paved, low maintenance & fully enclosed.

Council Tax Band & EPC Rating:

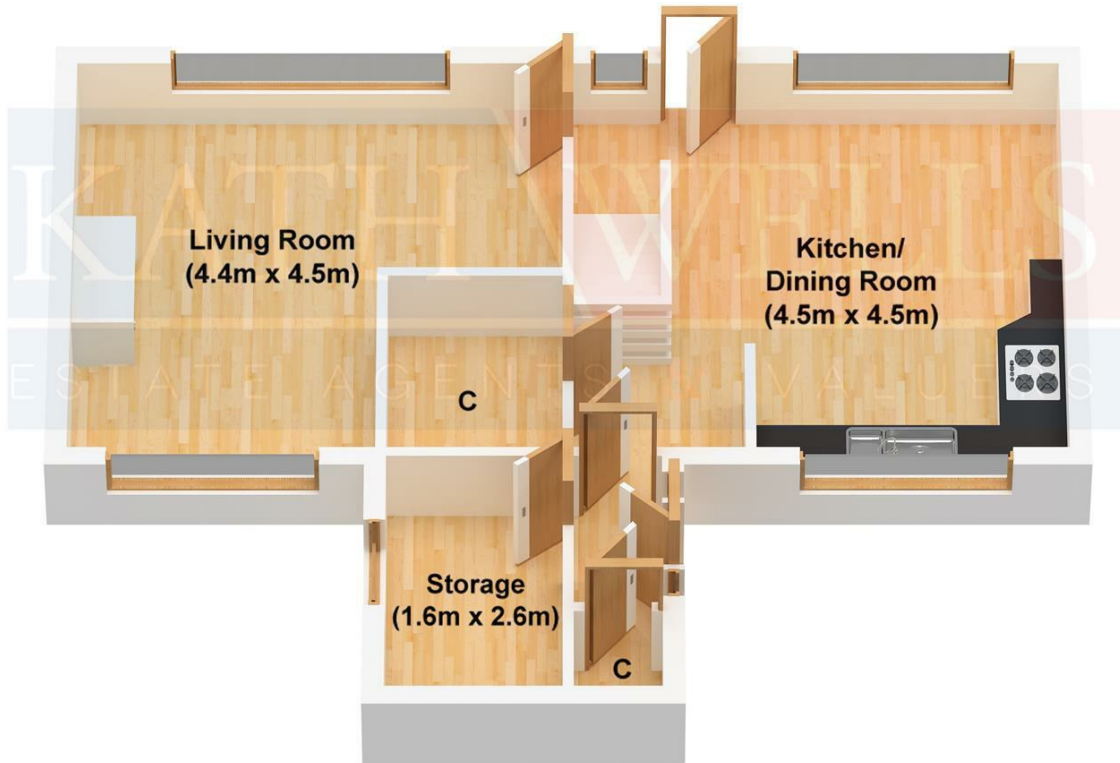
Council Tax Band: A / EPC Rating: G

EPC Link:

<https://find-energy-certificate.service.gov.uk/energy-certificate/2040-3624-5060-5204-0725>

| Energy Efficiency Rating | | Current | Potential |
|--|--|----------------------------|-----------|
| <i>Very energy efficient - lower running costs</i> | | | |
| (92 plus) A | | | |
| (81-91) B | | | |
| (69-80) C | | | 70 |
| (55-68) D | | | |
| (39-54) E | | | |
| (21-38) F | | | |
| (1-20) G | | 9 | |
| <i>Not energy efficient - higher running costs</i> | | | |
| England & Wales | | EU Directive 2002/91/EC | |

Ground Floor



First Floor

