



## Matheson Road, W14

£3,000 Per calendar month

A spacious two bedroom, two bathroom apartment with a large south west facing garden. The property is in lovely condition throughout with open plan living and space for dining.

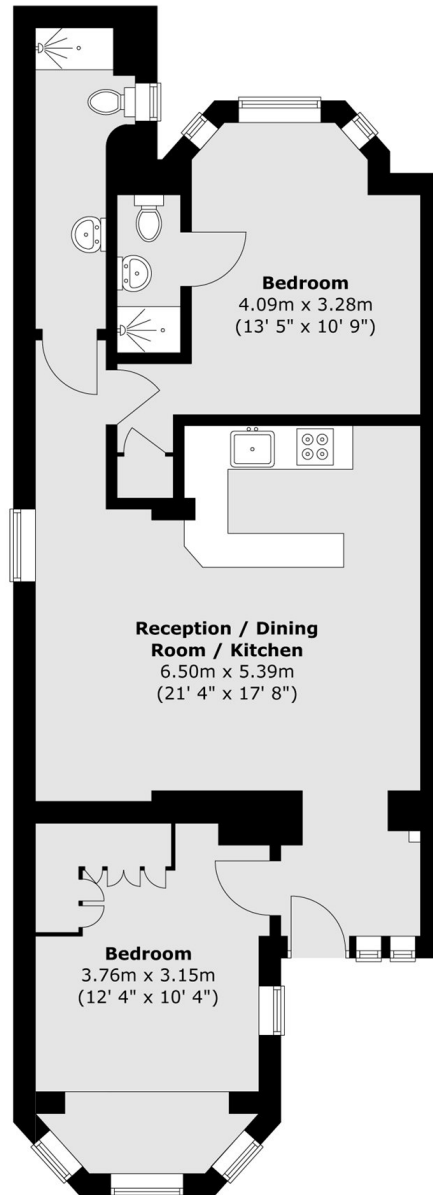
Matheson Road is moments away from all of the transport links, shops, cafés and restaurants that West Kensington, Olympia and Kensington High Street have to offer.

### Features

- Two Bedrooms
- Garden
- Spacious
- Two Bathrooms
- Private Entrance

# Matheson Road, London, W14

## Lower Ground Floor



Total area (approx.) : 71.3 sq. m (767 sq. ft)