



335

337



335 Hadfield Road, Hadfield, Glossop, Derbyshire, SK13 1PX

****SEE OUR VIDEO TOUR **** A well presented stone built end terraced house in Hadfield, with many recent improvements and unusually, including a garage. Briefly comprising an entrance vestibule, front lounge with period style fireplace, a fitted dining kitchen with Granite tops, two first floor bedrooms and a modern bathroom with period style suite. Gas central heating, pvc double glazing, frontage, shared gated driveway and enclosed sunny South facing rear garden. Energy Rating D

£215,000

Viewing arrangements

Viewing strictly by appointment through the agent

44 High Street West, Glossop, Derbyshire, SK13 8BH 01457 858888

GROUND FLOOR

Entrance Vestibule

Composite front door and door leading through to:

Lounge

14'2" (less chimney breast) x 14'0" (less vest)

Pvc double glazed front window, central heating radiator, period style fireplace, electric meter cupboard, tv aerial point and door through to:

Dining Kitchen

13'6" narrowing to 10'3" x 9'9" (plus stairs)

A range of fitted shaker style kitchen units including base cupboards and drawers, wine rack, integrated automatic

washing machine/dryer, electric and gas cooker points, Granite work tops with a Belfast type sink and mixer tap, matching wall cupboards, understairs recess, central heating radiator, pvc double glazed rear window and external rear door, stairs leading to:

FIRST FLOOR

Landing

Access to the loft space, pvc double side window and doors leading off to:

Bedroom One

12'11" x 11'2"

Pvc double glazed front window, central heating radiator and stripped floorboards.

Bedroom Two

10'1" x 6'7"

Pvc double glazed rear window and central heating radiator.

Bathroom

A refitted period style white suite with matt black fittings and including a freestanding double ended back to wall oval bath with mixer tap, ball and claw feet, and shower over with shower screen, wash hand basin with mixer tap and vanity unit, close coupled wc, black towel radiator and pvc double glazed rear window.

Garage

Up and over door, power and light.

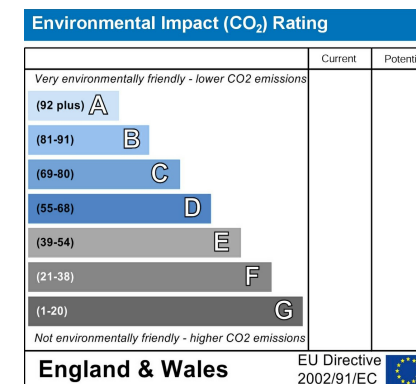
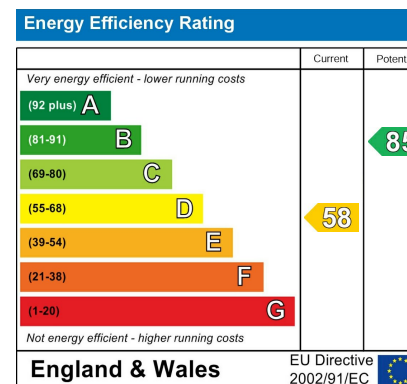
Gardens

The property has a walled frontage, a shared driveway and an enclosed South Facing rear garden with patio area.

Our ref: Cms/cms/0521/26

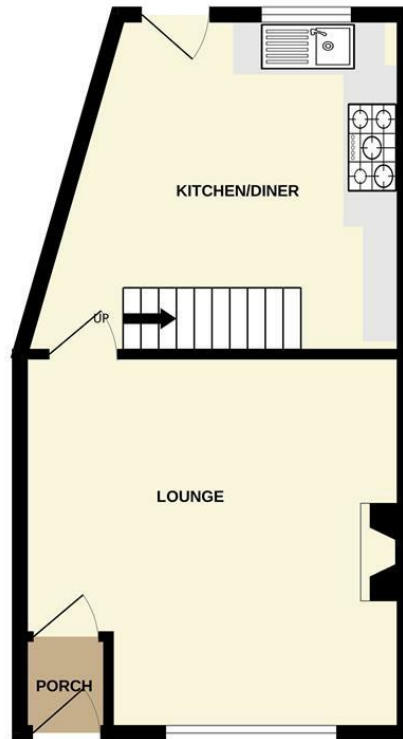
Note - Anti Money Laundering

To be able to sell or purchase a property in the United Kingdom all agents have a legal requirement to conduct Identity checks on all customers involved in the transaction to fulfil their obligations under Anti Money Laundering regulations. We outsource this check to a third party and a charge will apply. Ask the branch for further details.





GROUND FLOOR



1ST FLOOR



Whilst every attempt has been made to ensure the accuracy of the floorplan contained here, measurements of doors, windows, rooms and any other items are approximate and no responsibility is taken for any error, omission or mis-statement. This plan is for illustrative purposes only and should be used as such by any prospective purchaser. The services, systems and appliances shown have not been tested and no guarantee as to their operability or efficiency can be given.
Made with Metropix ©2024



These particulars are believed to be accurate but they are not guaranteed and do not form a contract. Neither Jordan Fishwick nor the vendor or lessor accept any responsibility in respect of these particulars, which are not intended to be statements or representations of fact and any intending purchaser or lessee must satisfy himself by inspection or otherwise as to the correctness of each of the statements contained in these particulars. Any floorplans on this brochure are for illustrative purposes only and are not necessarily to scale.

Offices at: Chorlton, Didsbury, Disley, Hale, Glossop, Macclesfield, Manchester Deansgate, Manchester Whitworth Street, New Mills, Sale, Wilmslow and Withington

44 High Street West, Glossop, Derbyshire, SK13 8BH

01457 858888

glossop@jordanfishwick.co.uk
www.jordanfishwick.co.uk

