

SNELLERS

ESTATE AGENTS



Cromwell Road, TW13

£2,800 PCM

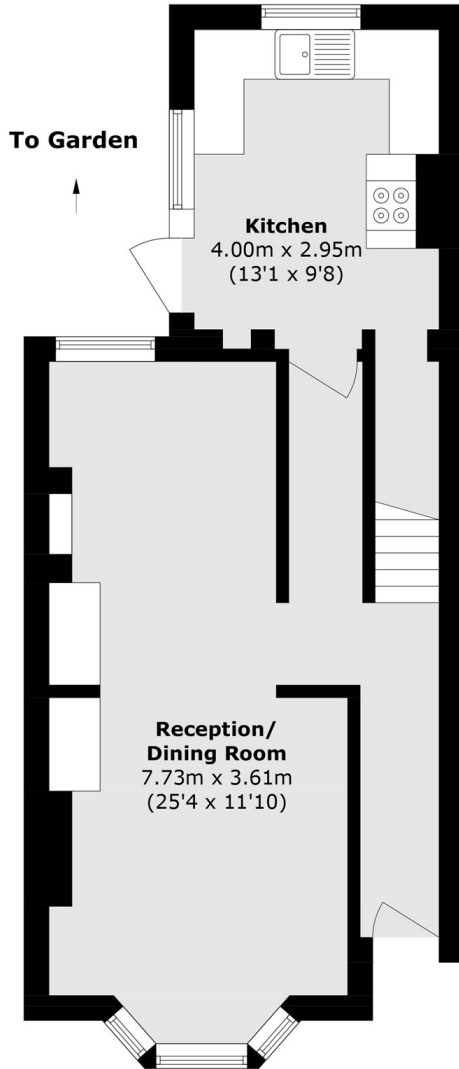
Beautifully presented three bedroom detached Victorian House only moments from local shops and amenities. The property comprises spacious through lounge, separate modern kitchen, bathroom and ample storage throughout.

Located moments from Feltham High Street and within easy reach of Feltham mainline train station with its fast link train service into London Waterloo.

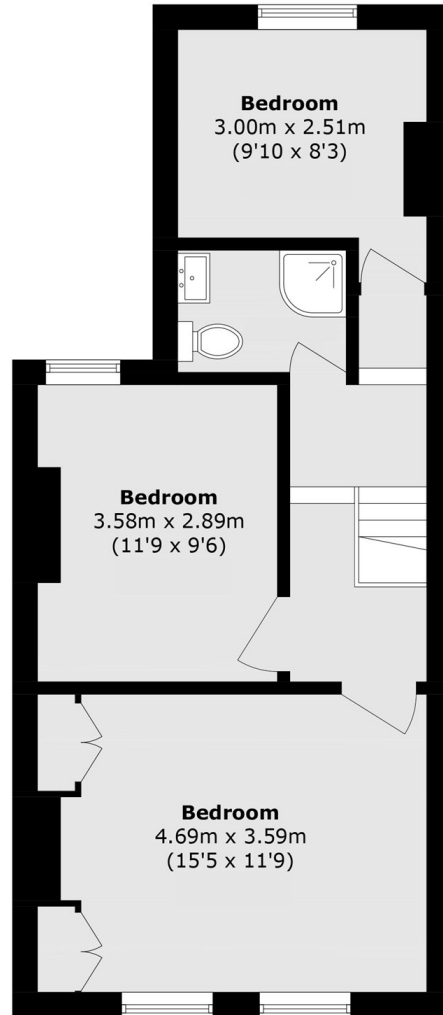
- Detached House • Three Bedrooms • One Bathroom •
- Original Features • Ample Storage • Modern •

SNELLERS

ESTATE AGENTS



Ground Floor



First Floor

Total area (approx.): 95.0 sq. m (1022.5 sq. ft)

Snellers Hampton Hill Lettings
197-201 High Street
Hampton Hill
TW12 1NL
020 8783 3633
hamptonlettings@snellers.co.uk

Energy Rating: We aim to make our particulars both accurate and reliable. However they are not guaranteed; nor do they form part of an offer or contract. If you require clarification on any points then please contact us, especially if you're traveling some distance to view. Please note that appliances and heating systems have not been tested and therefore no warranties can be given as to their good working order