



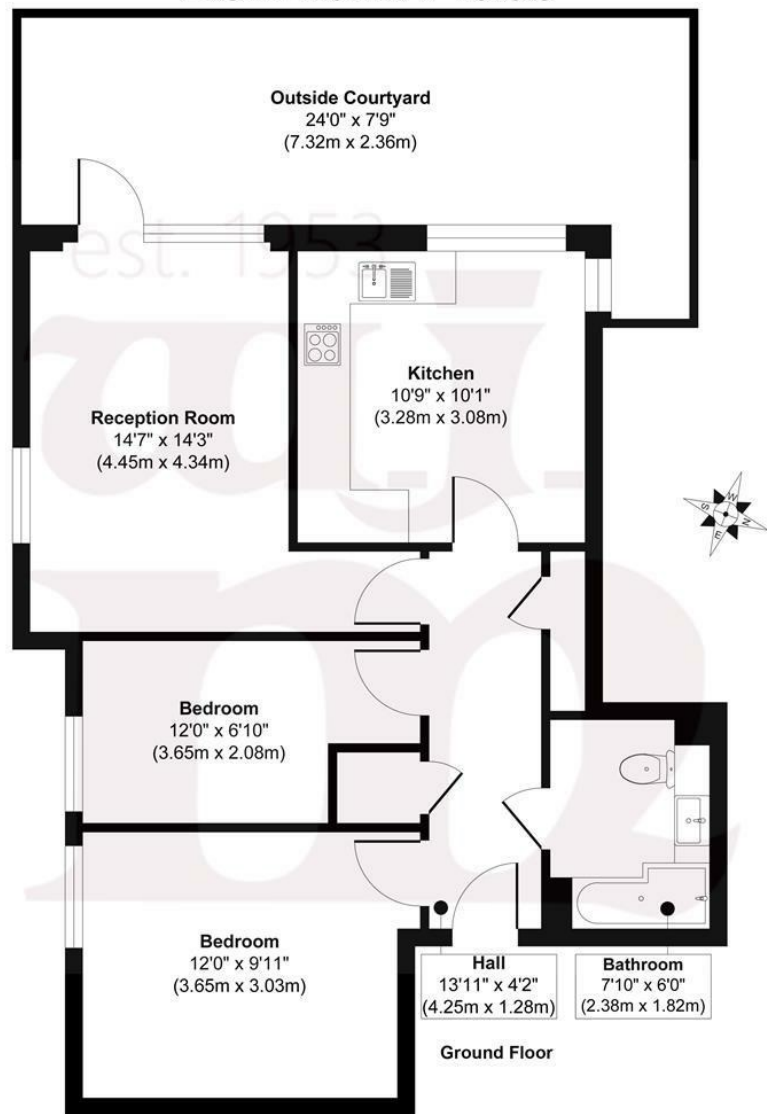
DENMARK PLACE, E3

£98,750 S/O 25%

- Allocated off street parking
- Wonderful residents' communal garden
- Recently redecorated
- Chain free
- 25% shared ownership
- Low service charge costs

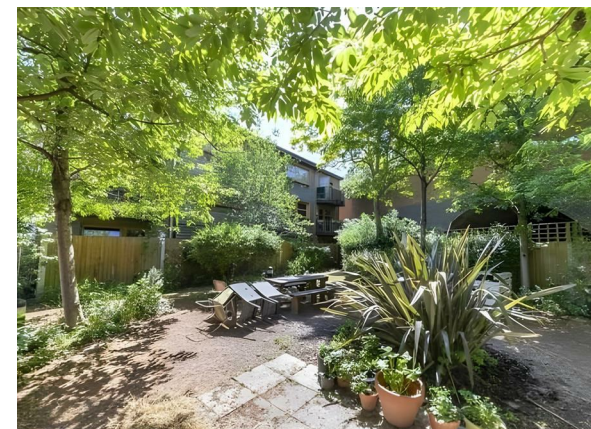
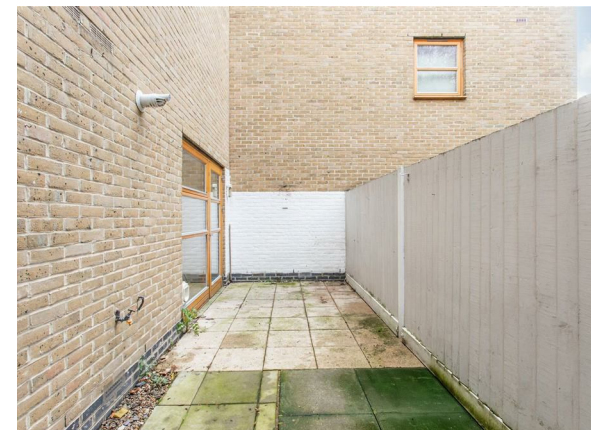
wj.
meade

Denmark Place



Approx. Gross Internal Floor Area 615 sq. ft / 57.15 sq. m

Illustration for identification purposes only, measurements are approximate, not to scale.
Produced by Elements Property



WJ Meade are pleased to present a shared ownership (25% stake) opportunity for a modern two bedroom ground floor apartment. Located in a small residential development, just off of Kitkat Terrace, convenient for Bow Road underground and Bow Church DLR stations, providing great access into the City, Canary Wharf and Stratford. The property is arranged over 615sq ft, with a stylish bathroom suite, eat-in kitchen and separate reception room. The private, West facing, patio garden offers the perfect opportunity for alfresco entertaining or peaceful relaxation, whilst the large landscaped communal garden provides social interaction within the resident community.

Service charge £111.13 pa

Rent £869.61 pm

102 years lease

Council Tax Band D

Current EPC Rating 80

Tenure: Leasehold



All sizes are approximate. The Agent has not tested any apparatus, equipment, fixtures and fittings, or services and so cannot verify that they are in working order or fit for the purpose. A buyer is advised to obtain verification from their Solicitors or Surveyor. Photographs are for illustration purposes only and may depict items, which are not for sale or included in the sale price. References to tenure of a property are based upon information supplied by the vendor. The agent has not had sight of the title documents, a buyer is advised to obtain verification from their solicitor. Money Laundering Regulations 2003: Intending purchasers will be asked to produce identification, documentation at a later stage and we would ask for your co-operation in order that there will be no delay in agreeing the sale.

These particulars are intended to give a fair description of the property only and are in no way guaranteed, nor do of any contract. They are issued on the express condition that all negotiations are conducted through W.J. Meade Estate Agents. All subject to contract and to being unsold.