



ESTHER ANNE PLACE, N1

£3,000 pcm

Studio suite apartment with wooden flooring, double-height ceilings, underfloor heating, comfort cooling, and a bespoke designer kitchen and bathroom. Sought-after, Beautifully restored heritage Edwardian building the development is situated in the heart of Angel N1.

- Large studio/1 bed
- 24 hour on-site concierge
- 0.5 miles to stations
- Unfurnished

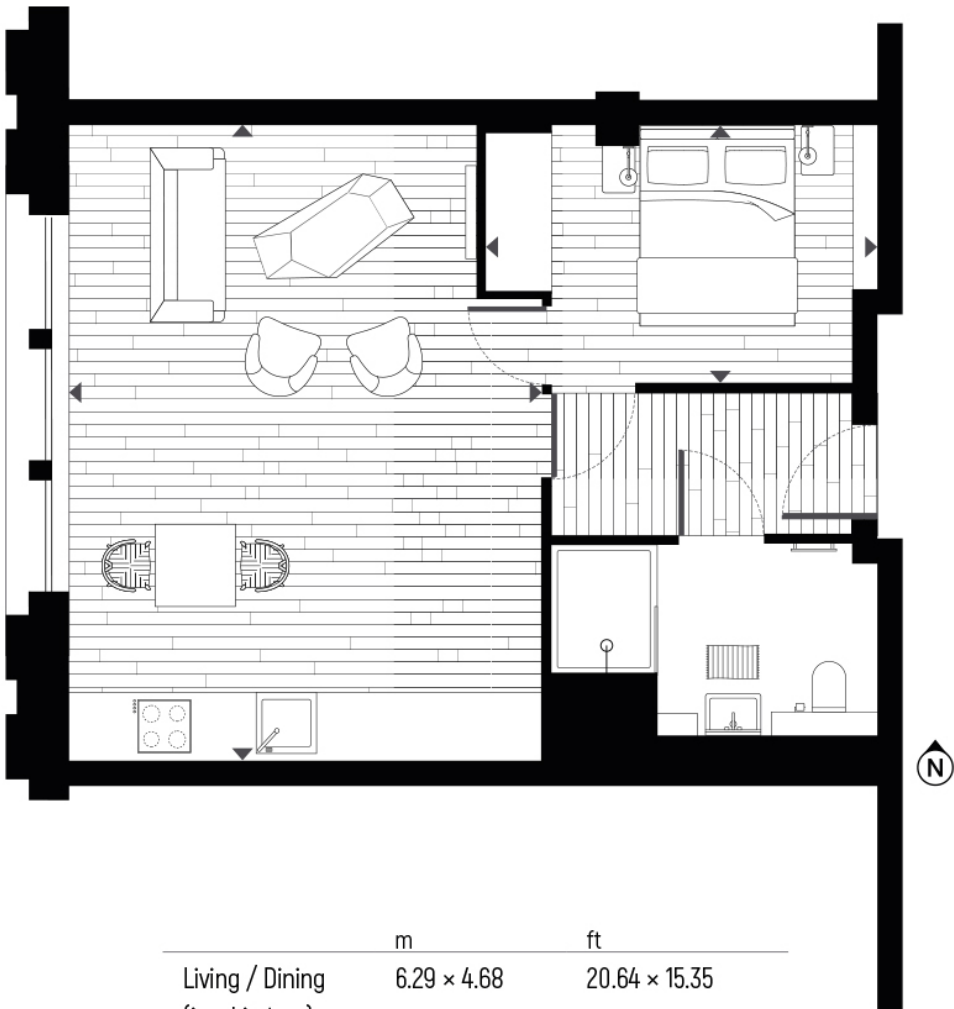


ABOUT THE HOME

Upper Street is a major draw, offering a wide range of independent boutiques, well-known brands, cafés, bars, and restaurants. The area has a strong food and nightlife scene, from casual dining to established theatres and cinemas. Well connected via the Northern line, with fast access to the City, West End, and King's Cross. Highbury & Islington station provides Overground and Victoria line services, making commuting across London straightforward.







	m	ft
Living / Dining (inc. kitchen)	6.29 × 4.68	20.64 × 15.35
Bedroom	3.63 × 2.55	11.91 × 8.32
Total	49 sqm	527.4 sqft

LiFE RESIDENTIAL
71 Drayton Park, London, N5
1BF
Sales: 020 3838 8666
Lettings: 020 7359 4488

Energy Rating: C. We aim to make our particulars both accurate and reliable. However they are not guaranteed; nor do they form part of an offer or contract. If you require clarification on any points then please contact us, especially if you're traveling some distance to view. Please note that appliances and heating systems have not been tested and therefore no warranties can be given as to their good working order.