

## Maltings Close, E3

£2,100 Per calendar month

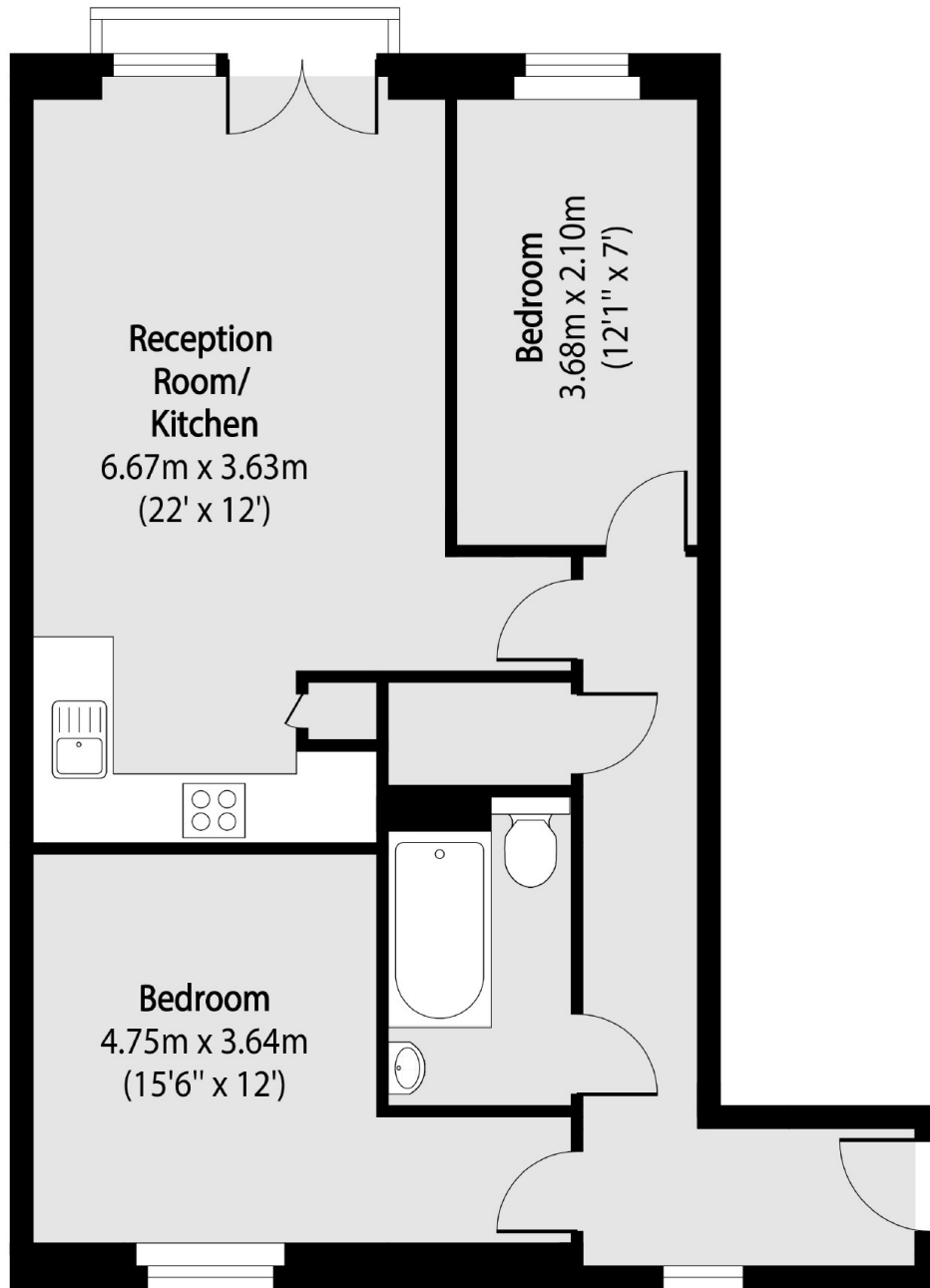
Bright two bedroom apartments in a gated development. Located on the second floor, the apartment has two bedrooms, one bathroom, spacious entrance hallway and is perfect for open plan living.

Perfect location within easy reach of Stratford Westfield for all shops, bars and restaurants. Also close to Bromley by Bow and Mile End.

### Features

- Two Double Bedrooms
- Open Plan
- Gated Development
- Lift Access
- Juliet Balcony
- Secure Parking

Maltings Close,  
London, E3



Total area (approx): 60.98 sq m (656 sq. ft)