



## Portsmouth Road, KT6

£1,995 Per calendar month

If you are looking for a fantastic riverside apartment, then look no further! With amazing river views, two double bedrooms and allocated parking, this flat is ideal!

Portsmouth Road runs along the River Thames and leads to Kingston town centre. Surbiton's convenient High Street is less than half a mile away.

### Features

- Large Reception Room
- Two Double Bedrooms
- River Views
- Ample Storage
- Allocated Parking
- Central Location

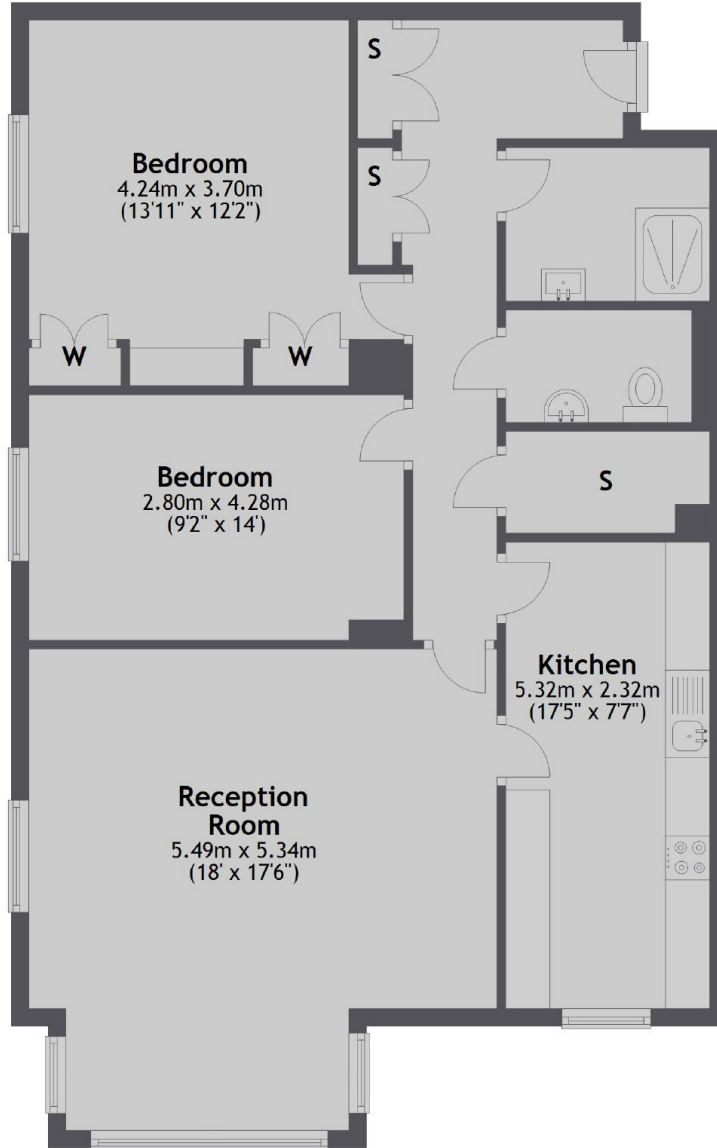


Portsmouth Road, KT6



Portsmouth Road,  
Surbiton, KT6

Second Floor



Total area: approx. 90.4 sq. metres (972.7 sq. feet)