



St Georges Drive
London, SW1V

CHESTERTONS





A stylish top floor two bedroom lateral apartment located in this stucco fronted period building in the heart of Pimlico, showcasing charming original features throughout.

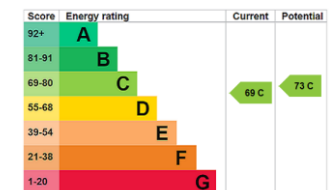
This beautifully presented home comprises two double bedrooms, a modern bathroom, fully-fitted kitchen, and a bright reception room. The spacious open-plan offers a versatile living and entertaining area, ideal for hosting. The property is offered with a share of freehold and no onward chain, making it an attractive and straightforward purchase.

Located on St George's Drive, the apartment is ideally positioned within easy reach of the boutiques, cafés and restaurants of Pimlico, Belgravia and Chelsea. Excellent transport links are available nearby at Victoria Station, offering access to the Victoria, Circle and District lines, National Rail services, and the Gatwick Express.

A top floor two bedroom flat entered on the third floor of this Victorian, stucco-fronted building. The flat has two good bedrooms, a large bright reception room, modern kitchen and family bathroom. Presented in superb condition throughout the property is incredibly convenient for Pimlico and Victoria stations and walking distance to Sloane Square.

- Stylish top-floor, two-bedroom lateral apartment
- Beautifully presented throughout, excellent natural light
- Comprises two well-proportioned double bedrooms, a modern family bathroom, and a fully fitted
- Spacious open-plan reception room, ideal for both everyday living and entertaining
- Offered with a share of freehold and no onward chain
- Located on St George's Drive location, within easy reach of Pimlico, Victoria Station

Asking Price £725,000



Tenure: Share of Freehold 123 years remaining
Service Charge: £3,000 Per Annum (Including Sinking Fund)
Ground Rent: £0
Local Authority: City of Westminster
Council Tax Band: A

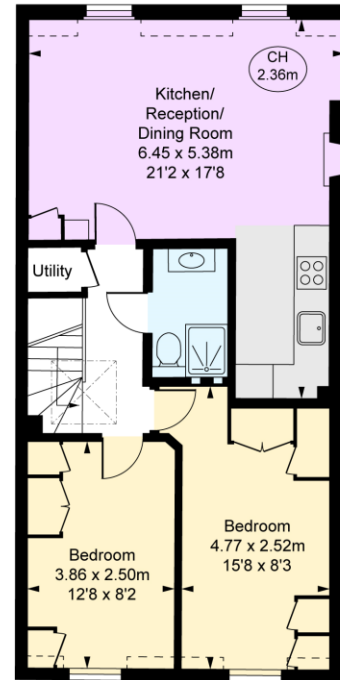
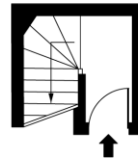
Chestertons Westminster & Pimlico Sales

105 Wilton Road
 London
 SW1V 1DZ
 westminster@chestertons.co.uk
 020 3040 8201
 chestertons.co.uk

St Georges Drive, SW1V

Approximate Gross Internal Area
60.25 sq m / 649 sq ft

(Including restricted height
under 1.5m [- - - - -])
(CH = Ceiling Heights)



Third Floor
Approximate Gross Internal Area
3.21 sq m / 35 sq ft

Fourth Floor
Approximate Gross Internal Area
57.04 sq m / 614 sq ft



This plan is not to a given scale. A detailed layout plan to scale for valuation is available on request. All measurements and areas are within 1% tolerance and have been prepared in accordance with industry standards as defined in theRICS Code of Measuring Practice
© Fulham Performance

Chesterton UK Services Limited trading as Chestertons for themselves and for the vendor of this property whose agents they are, give notice that (i) these particulars do not constitute any part of an offer or contract, (ii) all statements contained within these particulars are made without responsibility on the part of Chestertons or the vendor, (iii) whilst made in good faith, none of the statements contained within these particulars are to be relied upon as a statement or representation of fact, (iv) any intending purchasers must satisfy themselves by inspection or otherwise as to the correctness of each of the statements contained within these particulars, (v) the vendor does not make or give either Chestertons or any person in their employment any authority to make or give representation or warranty whatsoever in relation to this property. Wide angle lenses may be used. ©Copyright Chestertons | Chesterton UK Services Limited | Registered Office 40 Connaught Street, Hyde Park, London W2 2AB Registered Company Number 05334580.



This paper is
100% recyclable