

Ramsey Close, Atherton, M46 9EQ
Offers Over £270,000

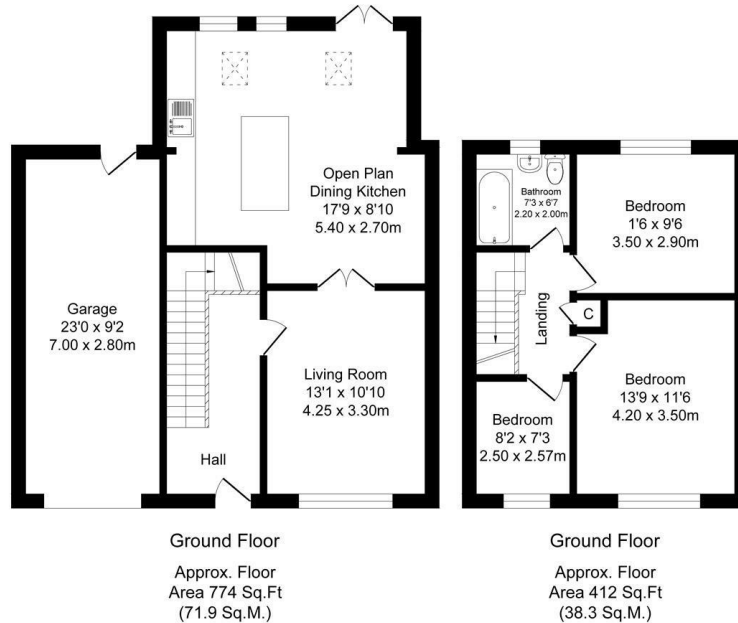


BALMER & CO in ATHERTON are delighted to offer FOR SALE this extended three bedroom semi-detached property, tucked away on Ramsey Close in Atherton. Offering spacious accommodation and located within one of Atherton's most popular areas, it is not one to be missed. Entrance to the property reveals a hallway which leads into the living room then through to the modern kitchen/family room complete with island and floor to ceiling windows and patio doors leading out to the East facing garden. To the first floor are two double bedrooms and a single bedroom, all benefitting from fitted furniture and a three piece bathroom suite. Externally, the property offers low maintenance gardens to the front and rear with off road parking for three vehicles and access to the attached garage. Early viewings highly recommended, all enquiries welcome.

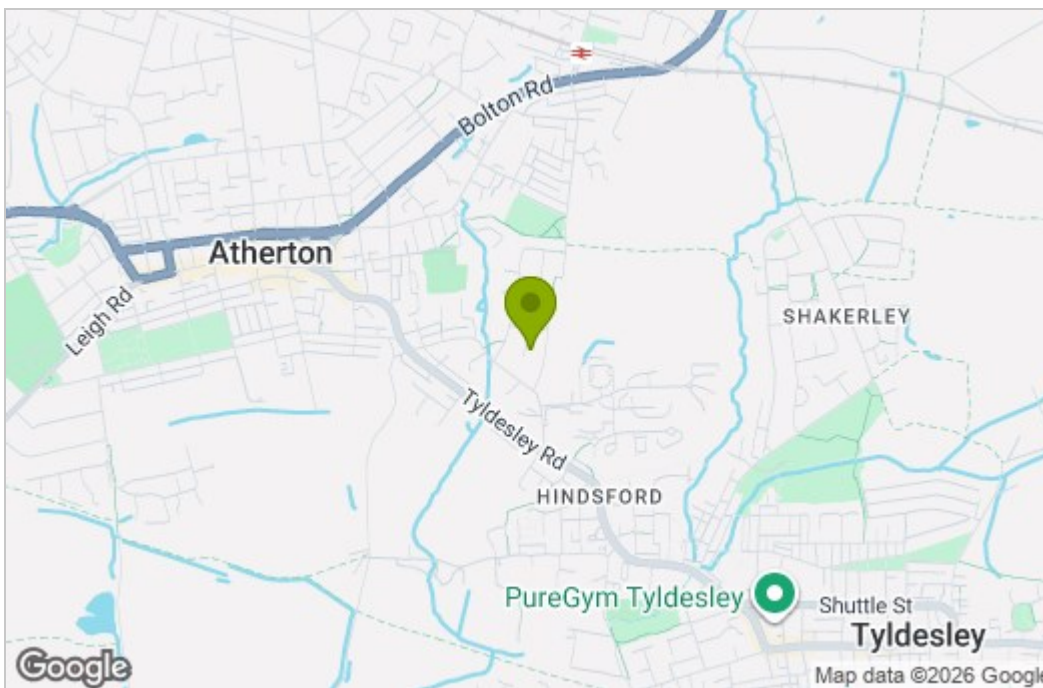
Floor Plan

Ramsey Close, Atherton
Total Approx. Floor Area 1186 Sq.ft. (110.2 Sq.M.)

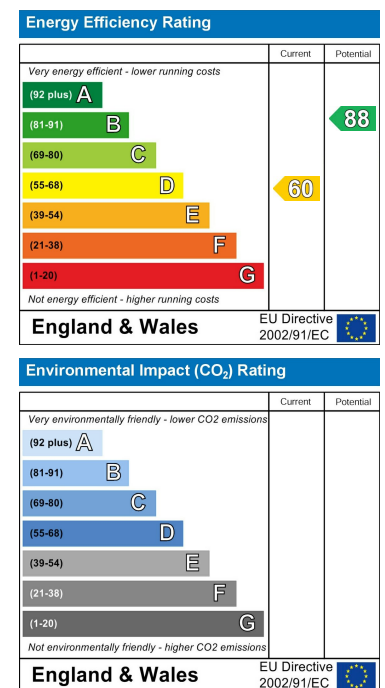
Surveyed and drawn by Lens Media for illustrative purposes only. Not to scale. Whilst every attempt was made to ensure the accuracy of the floor plan, all measurements are approximate and no responsibility is taken for any error.



Area Map



Energy Efficiency Graph



These particulars, whilst believed to be accurate are set out as a general outline only for guidance and do not constitute any part of an offer or contract. Intending purchasers should not rely on them as statements of representation of fact, but must satisfy themselves by inspection or otherwise as to their accuracy. No person in this firm's employment has the authority to make or give any representation or warranty in respect of the property.