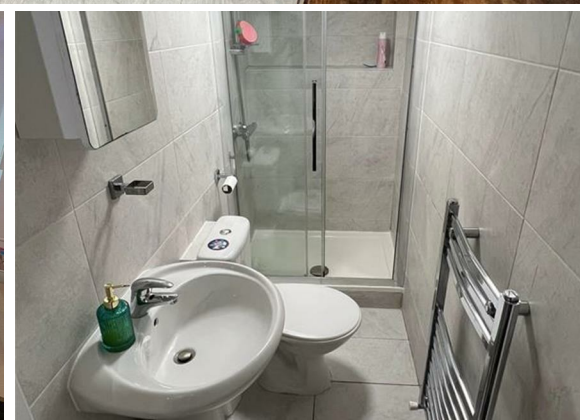
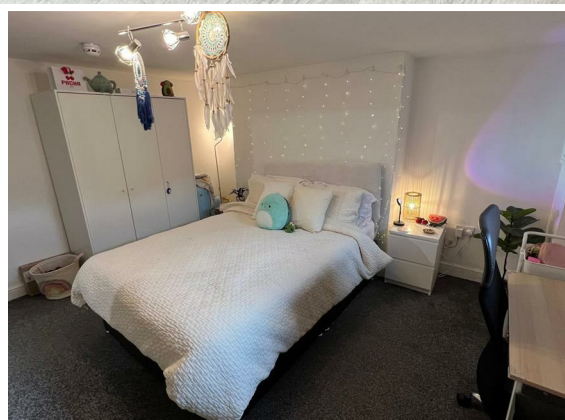




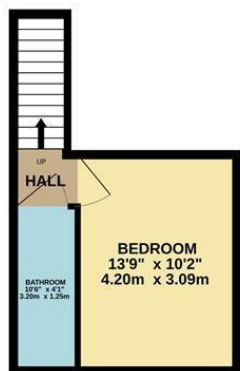
**6 Bed
House - Terraced
located
in Fallowfield**

£3,978 PCM

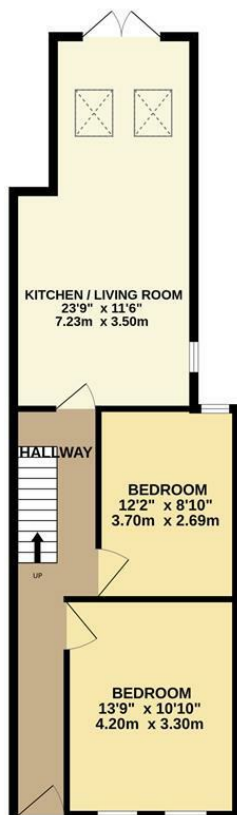


STANTON
PROPERTIES

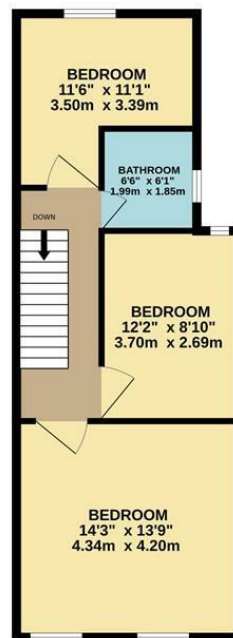
BASEMENT
227 sq.ft. (21.1 sq.m.) approx.



GROUND FLOOR
617 sq.ft. (57.3 sq.m.) approx.



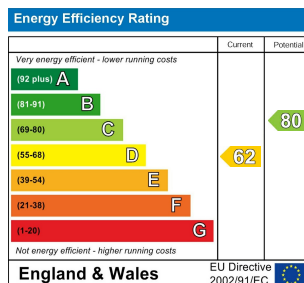
1ST FLOOR
528 sq.ft. (49.1 sq.m.) approx.



TOTAL FLOOR AREA: 1371 sq.ft. (127.4 sq.m.) approx.

Whilst every attempt has been made to ensure the accuracy of the floorplan contained here, measurements of doors, windows, rooms and any other items are approximate and no responsibility is taken for any error, omission or mis-statement. This plan is for illustrative purposes only and should be used as such by any prospective purchaser. The services, systems and appliances shown have not been tested and no guarantee as to their operability or efficiency can be given.

Made with Metropix ©2024



DIRECTIONS

CONTACT

31 Barlow Moor Road
Didsbury
Manchester
M20 6TW

E: office@stantonproperties.co.uk
T: 01614345307

