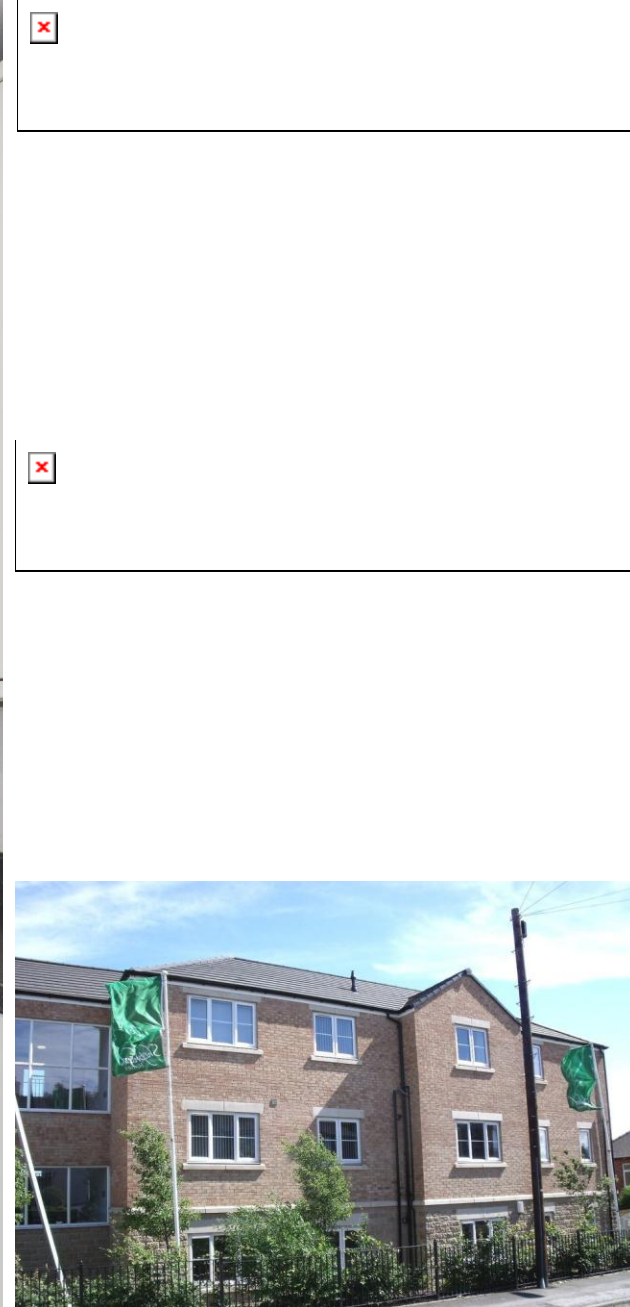


FOR SALE



Metro Apartments, Richmond Way, Kimberworth
Guide Price £75,000



Metro Apartments, Richmond Way, Kimberworth

1 Bedroom, 1 Bathroom

Guide Price £75,000

- Apartment
- Ground floor
- One bedroom
- Commuter links
- Allocated parking

GUIDE PRICE £75,000 - £80,000. Awaiting internal photos. This one double bedroom ground floor apartment is perfectly suited to a variety of purchasers. Located just off Junction 34 of the M1 the development is ideally situated for anyone needing to commute to Rotherham, Sheffield, Barnsley or Doncaster and also great for anyone working at Meadowhall.

Briefly there is a good size living room which adjoins the kitchen. The kitchen comprises of modern, glossy, soft closing cupboards and drawers, an electric oven, stainless steel gas hob and extractor hood.

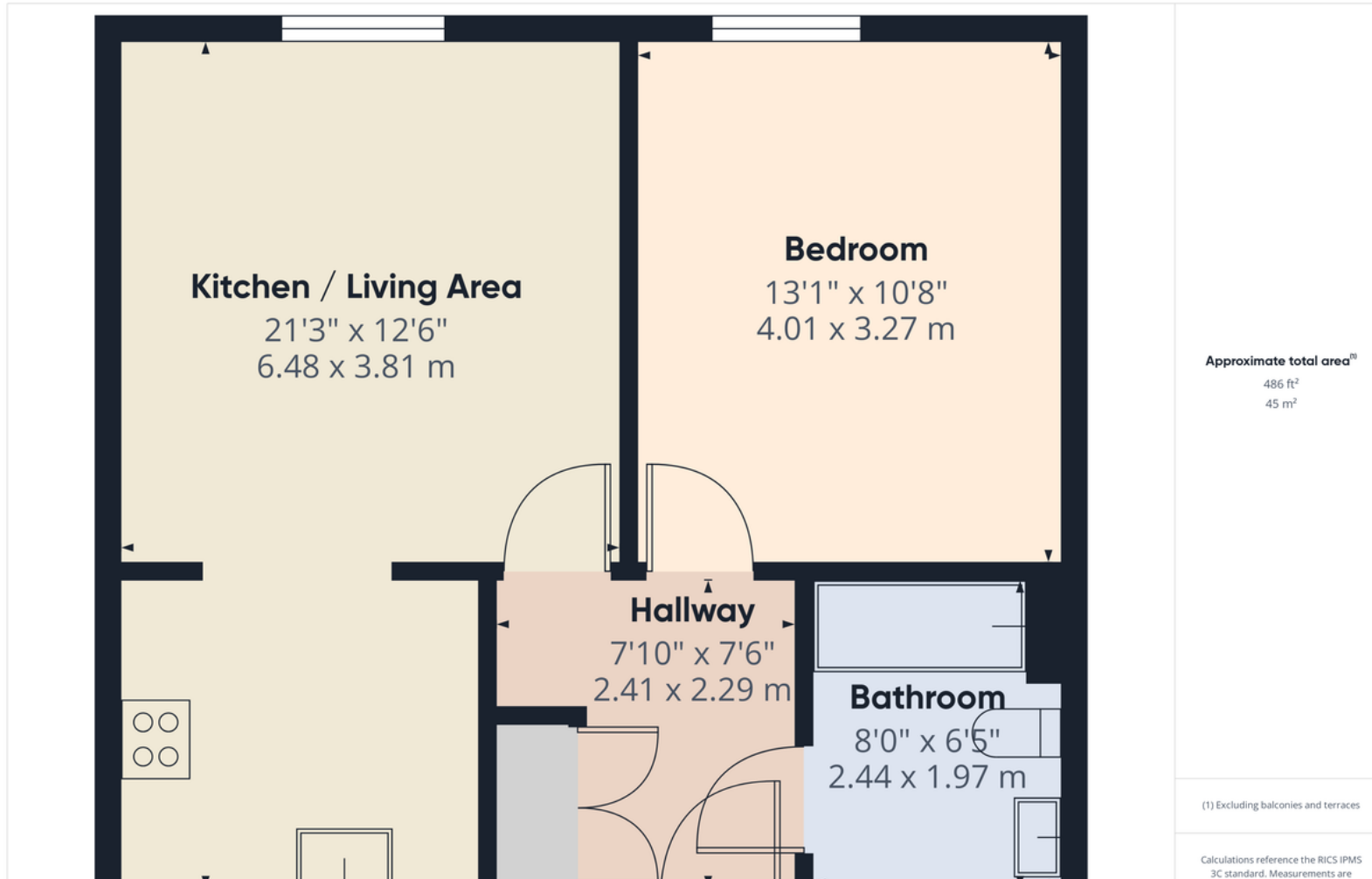
There is great sized double bedroom. The bathroom with a white three piece suite and mixer shower above the bath has tiled flooring.

The property also benefits from gas central heating with combination boiler, UPVC windows and door entry intercom.

Externally the property has one allocated parking space with further visitors parking available.



Score	Energy rating	Current	Potential
92+	A		
81-91	B		81 B
69-80	C	80 C	
55-68	D		
39-54	E		
21-38	F		
1-20	G		



Martin & Co Rotherham

5 Worry Goose Lane • Whiston • Rotherham • S60 4AA
T: 01709 544982 • E: rotherham@martinco.com

01709 544982

<http://www.martinco.com>



Accuracy: References to the Tenure of a Property are based on information supplied by the Seller. The Agent has not had sight of the title documents. A Buyer is advised to obtain verification from their Solicitor. Items shown in photographs including but not limited to carpets, fixtures and fittings are not included unless specifically mentioned within the sales particulars. They may however be available by separate negotiation. Buyers must check the availability of any property and make an appointment to view before embarking on any journey to see a property. No person in the employment of the agent has any authority to make any representation about the property, and accordingly any information given is entirely without responsibility on the part of the agents, sellers(s) or lessors(s). Any property particulars are not an offer or contract, nor form part of one. **Sonic / Laser Tape:** Measurements taken using a sonic / laser tape measure may be subject to a small margin of error. **All Measurements:** All Measurements are Approximate. **Services Not tested:** The Agent has not tested any apparatus, equipment, fixtures and fittings or services and so cannot verify that they are in working order or fit for the purpose. A Buyer is advised to obtain verification from their Solicitor or Surveyor.