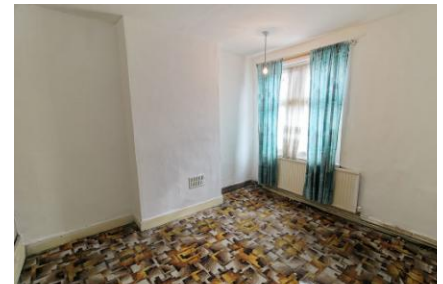




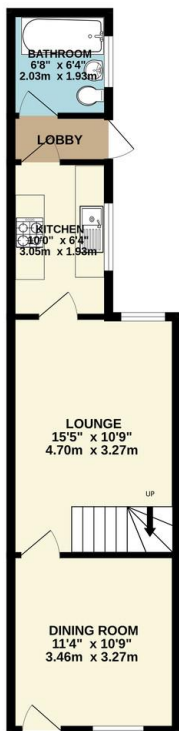
FOR SALE

3 Bed Mid Terrace in Florence Road, Spinney Hills, LE5 3FU
£200,000

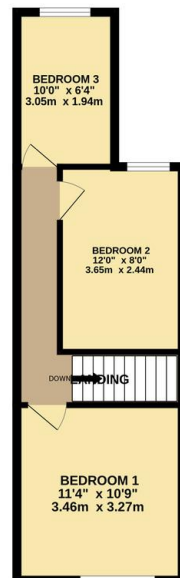
This three bedroom mid terrace property, located in the highly popular area of Spinney Hills, offers an exciting opportunity for those looking to undertake a full renovation project. The property comprises three bedrooms on the first floor, with a bathroom located on the ground floor. It is offered with no onward chain, making it an ideal choice for buyers looking to move quickly. Contact Phillips George today to arrange a viewing and explore the potential this property has to offer.



GROUND FLOOR
413 sq.ft. (38.3 sq.m.) approx.

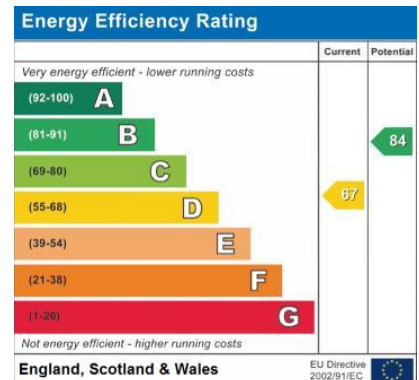


1ST FLOOR
351 sq.ft. (32.6 sq.m.) approx.



TOTAL FLOOR AREA: 764 sq.ft. (71.0 sq.m.) approx.

Whilst every attempt has been made to ensure the accuracy of the floorplan contained here, measurements of doors, windows, rooms and any other items are approximate and no responsibility is taken for any error, omission or mis-statement. This plan is for illustrative purposes only and should be used as such by any prospective purchaser. The services, systems and appliances shown have not been tested and no guarantee as to their operability or efficiency can be given.
Made with Metrepx ©2022



- Mid Terrace
- Three Bedrooms
- No Upward Chain
- Renovation Project
- Two Reception Rooms
- Highly Popular Location
- Spinney Hills
- Ground Floor Bathroom

Agents Note: Whilst every care has been taken to prepare these sales particulars, they are for guidance purposes only. All measurements are approximate are for general guidance purposes only and whilst every care has been taken to ensure their accuracy, they should not be relied upon and potential buyers are advised to recheck the measurements.

