



1 Barnett Wood Lane, Leatherhead, KT22 7DF
£1,650 Per month

 2  1  2  D

AVAILABLE IMMEDIATELY - PART FURNISHED.

A two bedroom semi-detached home located on the Ashted/Leatherhead border, close to the mainline station, great local schools and the town centre.

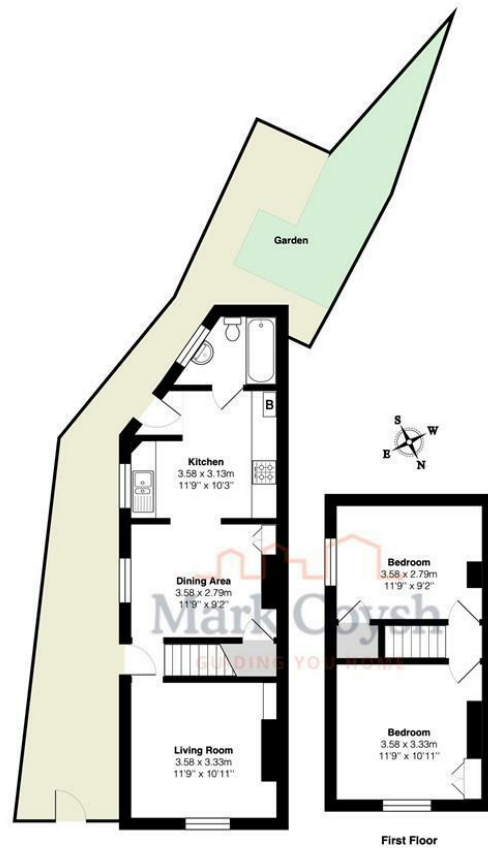
Accommodation includes two double bedrooms with storage, two well proportioned reception rooms, fitted kitchen and a downstairs bathroom.

Outside there are front, side and rear gardens.

Parking available on the surrounding roads. Note, some may require permits from the council.







Ground Floor
 Barnett Wood Lane, Leatherhead
 Total Area: 66.7 m² ... 718 ft² (excluding garden)

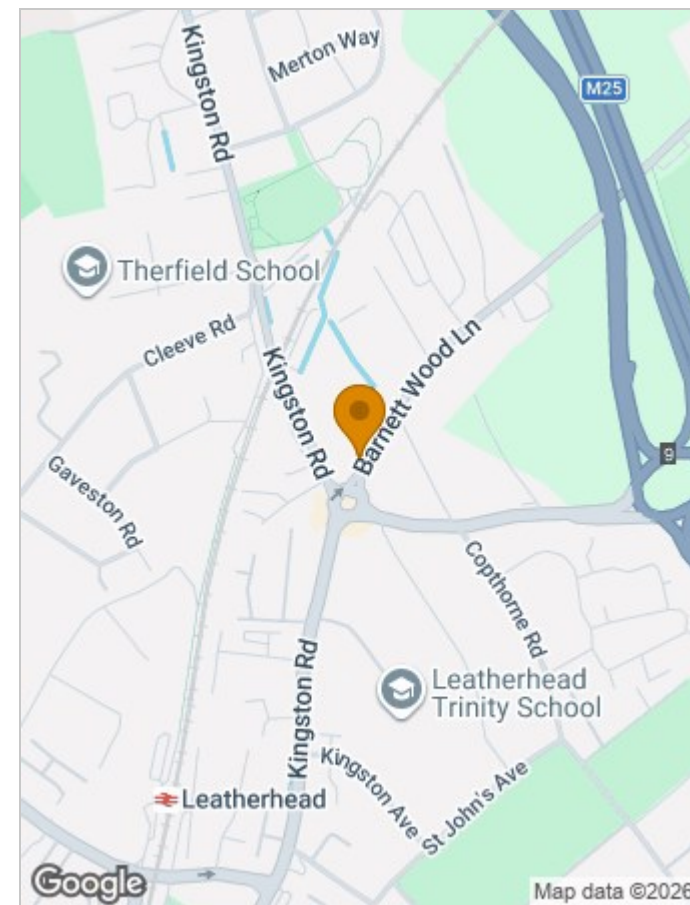
FOR ILLUSTRATIVE PURPOSES ONLY:
 Whilst every attempt has been made to ensure the accuracy of the floor plan shown, all measurements, positioning, fixtures, features, fittings and any other data shown are an approximate interpretation for illustrative purposes only and are not to scale.
 No responsibility is taken for any error, omission, mis-statement or use of data shown.
 The above statement applies to both 'Still Moving London LTD' and the Company or individual displaying this floor plan.
 Unauthorised reproduction prohibited.
 A&D Still Moving London LTD (www.stillmoving.london)



Viewing

Please contact our Mark Coysh Office on 01372 303703 if you wish to arrange a viewing appointment for this property or require further information.

These particulars, whilst believed to be accurate are set out as a general outline only for guidance and do not constitute any part of an offer or contract. Intending purchasers should not rely on them as statements of representation of fact, but must satisfy themselves by inspection or otherwise as to their accuracy. No person in this firms employment has the authority to make or give any representation or warranty in respect of the property.



Energy Efficiency Rating		Current	Potential
<i>Very energy efficient - lower running costs</i>			
(92 plus) A			
(81-91) B			
(69-80) C			
(55-68) D			
(39-54) E			
(21-38) F			
(1-20) G			
<i>Not energy efficient - higher running costs</i>			
England & Wales			
		EU Directive 2002/91/EC	

Environmental Impact (CO ₂) Rating		Current	Potential
<i>Very environmentally friendly - lower CO₂ emissions</i>			
(92 plus) A			
(81-91) B			
(69-80) C			
(55-68) D			
(39-54) E			
(21-38) F			
(1-20) G			
<i>Not environmentally friendly - higher CO₂ emissions</i>			
England & Wales			
		EU Directive 2002/91/EC	