



Dinsmore Road  
London, SW12

CHESTERTONS





A beautifully presented flat arranged over the entire ground floor of an attractive Victorian property.

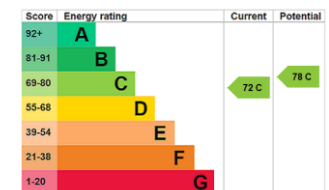
The property has been elegantly refurbished and boasts a wealth of period features including high ceilings, cornicing, sash windows, feature fireplace and original floorboards combined with contemporary design. The rear of the property has been extended to the side to create a bright and stylish open plan kitchen/reception ideal for entertaining with steel-framed French doors leading to a well-proportioned rear patio garden which features mature planting and a comfortable, sociable seating area.

There are two large double bedrooms, of which the second has built in storage and a courtyard. The modern bathroom includes in-built storage, and the property also benefits from further generous storage provided in the understairs cupboard.

Dinsmore Road is a quiet residential road running between Cavendish Road and Balham High Road. Clapham South and Balham Mainline and underground stations (Zone 2 and 3) are within a convenient short stroll, as are the wide-open spaces of Clapham Common and an abundance of cafes, bars, restaurants and shopping facilities local to the area.

- Kitchen/Reception Room
- Two Double Bedroom
- Bathroom
- Garden
- Storage

Offers in excess of  
£700,000



**Tenure:** Share of Freehold  
**Service Charge:** £0  
**Ground Rent:** £0  
**Local Authority:** Wandsworth  
**Council Tax Band:** C

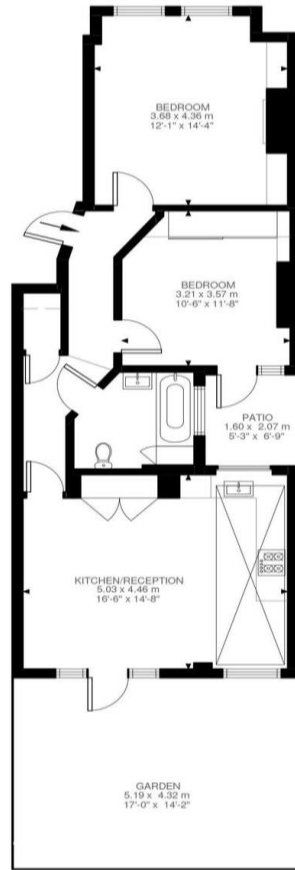
*Chestertons Battersea & Clapham Sales*

6 Battersea Rise  
 London  
 SW11 1ED

battersearise@chestertons.co.uk

020 7924 4400

chestertons.co.uk



Ground Floor  
684 ft<sup>2</sup>

Dinsmore Road, SW12  
Approximate Gross Internal Area  
63.57 SQ.M / 684 SQ.FT

KEY: CH = Ceiling Height  
Restricted Head Height

Illustration for identification purposes only. Not to scale.  
Floor Plan Drawn According To RICS Guidelines.

Chesterton UK Services Limited trading as Chestertons for themselves and for the vendor of this property whose agents they are, give notice that (i) these particulars do not constitute any part of an offer or contract, (ii) all statements contained within these particulars are made without responsibility on the part of Chestertons or the vendor, (iii) whilst made in good faith, none of the statements contained within these particulars are to be relied upon as a statement or representation of fact, (iv) any intending purchasers must satisfy themselves by inspection or otherwise as to the correctness of each of the statements contained within these particulars, (v) the vendor does not make or give either Chestertons or any person in their employment any authority to make or give representation or warranty whatsoever in relation to this property. Wide angle lenses may be used. ©Copyright Chestertons | Chesterton UK Services Limited | Registered Office 40 Connaught Street, Hyde Park, London W2 2AB Registered Company Number 05334580.



This paper is  
100% recyclable