

Sinclair



10 The Green, Donington Le Heath

£240,000

10 The Green

Donington Le Heath

This CHARMING THREE BEDROOM EXTENDED COTTAGE occupying a favourable position within the sought after Village of Donington Le Heath comes to the market after having enjoyed modernisation throughout. The cottage has a wealth of charm and character and in brief the property enjoys an entrance porch, open plan kitchen, dining room, lounge, guest cloakroom and a snug, with stairs rising to the first floor giving way to three bedrooms a study/dressing room and shower room respectively. Externally a rear garden with a low maintenance theme is complimented by a stone shingled frontage.

Council Tax band: A

Tenure: Freehold

- Extended
- Ground Floor Wc
- Three Bedrooms
- Three Reception Rooms
- Sought After Location
- Charming Cottage



GROUND FLOOR

Entrance Porch

Enter through a composite front door with inset opaque double glazed panel and having adjacent double glazed windows to side and front. Whilst also featuring ceramic tiled flooring and a gas fired central heating boiler.

Fitted Kitchen

17' 1" x 8' 5" (5.21m x 2.56m)

Having a range of wall and base units with complimentary butchers block work surfaces, Belfast sink with flexi hose mixer tap, integral oven and grill with four ring gas hob and extractor hood. Space and plumbing for further appliances, Karndean timber effect LVT flooring, exposed timber beams, uPVC double glazed window to front.

Dining Room

7' 5" x 9' 6" (2.26m x 2.90m)

Having uPVC double glazed window and door to the rear garden, exposed brick feature fireplace (not in use), ceramic tiled floor.

Ground Floor Wc

With low level push button wc and wash hand basin with monobloc mixer tap, tiled splashbacks, ceramic tiled flooring and access to understairs storage with space and plumbing for a washing machine.

Sung

11' 8" x 11' 2" (3.56m x 3.40m)

Dimensions: 3.40m x 3.56m (11'2" x 11'8"). Enjoying parquet LVT flooring, uPVC double glazed window to the front aspect, exposed timber beams, cast iron log burner with brick surround and hearth, built in cupboards, whilst opening into the snug via double doors.



Lounge

13' 4" x 11' 3" (4.06m x 3.43m)

Having timber effect laminate flooring, an inset vapor fireplace (electric), uPVC double glazed door accessing the rear garden with additional adjoining window.

FIRST FLOOR

Landing

Giving way to the entire first floor accommodation and comprises a storage cupboard.

Bedroom One

10' 5" x 11' 7" (3.17m x 3.53m)

Having a uPVC double glazed sash window to the front, inset downlights, feature chimney breast, exposed beams and access to the dressing room/study (formally an en-suite).

Dressing Room/Study

5' 4" x 6' 8" (1.63m x 2.03m)

With uPVC double glazed sash window to front.

Bedroom Two

6' 2" x 9' 0" (1.88m x 2.74m)

Having uPVC double glazed window to rear.

Bedroom Three

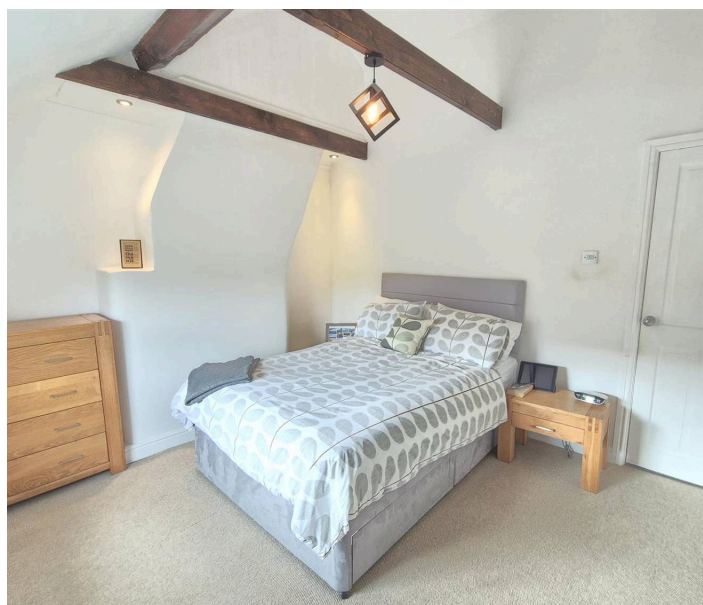
7' 8" x 5' 9" (2.34m x 1.75m)

With uPVC double glazed window to rear.

Shower Room

8' 9" x 4' 5" (2.67m x 1.35m)

This three piece suite comprises low level push button w.c, vanity wash hand basin with monobloc mixer tap, double walk in shower enclosure with thermostatic waterfall mixer tap, ceramic tiled flooring and part tiled walls and opaque uPVC double glazed window to side.

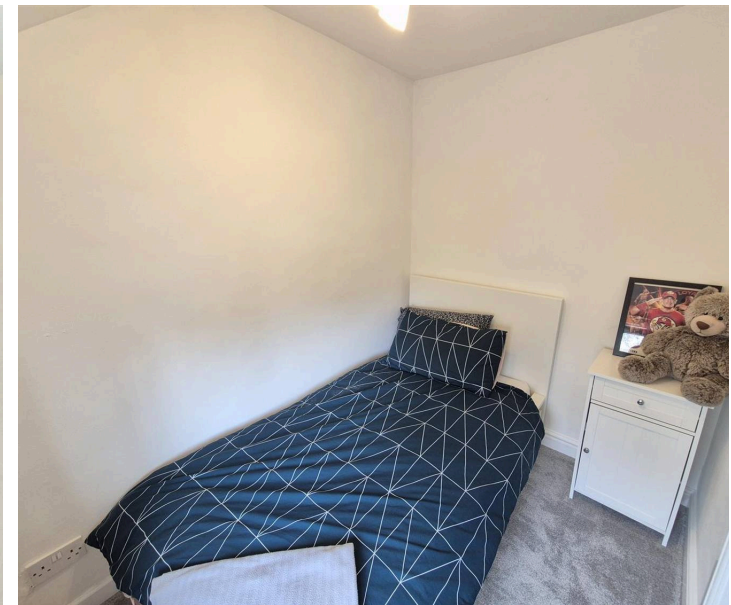


REAR GARDEN

A paved patio area with slate shingled edging is surrounded by a retaining brick wall and timber feather and close board fence panelling with further rear gated access. The garden enjoys wall lighting, a water point, a stone shingled area bisected by a cobbled walkway accessing the raised timber decking to the rear of the garden which in turn hosts a range of trees, shrubs and a garden shed. There is access for bins and general use over 12 & 18.

FRONT GARDEN

Surrounded by a picket fence and comprises an area of pebbling with a retaining brick wall and steps descending to the front door.





Ground Floor



First Floor





Sinclair Estate Agents

Sinclair Estate Agents, 3 Belvoir Road, Coalville – LE67 3PD

01530 838338

coalville@sinclairestateagents.co.uk

www.sinclairestateagents.co.uk/#/

Digital Markets Competition & Consumers Act 2024 (DMCC ACT) – The DMCC Act which came into force in April 2025 is designed to ensure that consumers are treated fairly and have all the necessary information required to make an informed purchase. Sinclair are committed to providing material information relating to the properties we market to assist prospective buyers when making a decision to proceed with a property purchase. It should be noted that all information will need to be verified by the buyers solicitors and is given in good faith from information obtained by sources including but not restricted to HMRC Land Registry, Spectre, Gov.uk and information provided and verified by our vendors.