



Connells

Flat B Alexandra Road
Mutley Plymouth



Property Description

We are excited to introduce this ground floor one bedroom apartment to the market, set within a charming Victorian house conversion and situated in a prime central location. Benefiting from one double bedroom, lounge, kitchen, bathroom and off-road parking.

Located in the prime location of Mutley, close to a host of local amenities such as shops and restaurants, well-regarded schools, local parks whilst being a stone's throw away from the city centre, Plymouth university and major transport links.

The property offers a comfortable double bedroom, a bathroom comprising bath with overhead shower, hand basin and W.C., a well-equipped kitchen with matching wall and base units and a spacious bright and airy lounge, bringing in ample natural daylight.

One of the standout features of this property is the rare off-road parking, a highly sought-after convenience in such a central location. The flat also benefits from a newly issued 999-year lease.

This apartment is the perfect opportunity for a first-time buyer or those seeking an investment opportunity, appealing to a wide range of buyers.

EARLY VIEWINGS ADVISED!

We are excited to introduce this ground floor one bedroom apartment to the market, set within a charming Victorian house conversion and situated in a prime central location.

Benefiting from one double bedroom, lounge, kitchen, bathroom and off-road parking.

Located in the prime location of Mutley, close to a host of local amenities such as shops and restaurants, well-regarded schools, local parks whilst being a stone's throw away from the city centre, Plymouth university and major transport links.

The property offers a comfortable double bedroom, a bathroom comprising bath with overhead shower, hand basin and W.C., a well-equipped kitchen with matching wall and base units and a spacious bright and airy lounge, bringing in ample natural daylight.

One of the standout features of this property is the rare off-road parking, a highly sought-after convenience in such a central location. The flat also benefits from a newly issued 999-year lease.

This apartment is the perfect opportunity for a first-time buyer or those seeking an investment opportunity, appealing to a wide range of buyers.

EARLY VIEWINGS ADVISED!

We are excited to introduce this ground floor one bedroom apartment to the market, set within a charming Victorian house conversion and situated in a prime central location. Benefiting from one double bedroom, lounge, kitchen, bathroom and off-road parking.

Located in the prime location of Mutley, close to a host of local amenities such as shops

and restaurants, well-regarded schools, local parks whilst being a stone's throw away from the city centre, Plymouth university and major transport links.

The property offers a comfortable double bedroom, a bathroom comprising bath with overhead shower, hand basin and W.C., a well-equipped kitchen with matching wall and base units and a spacious bright and airy lounge, bringing in ample natural daylight.

One of the standout features of this property is the rare off-road parking, a highly sought-after convenience in such a central location. The flat also benefits from a newly issued 999-year lease.

This apartment is the perfect opportunity for a first-time buyer or those seeking an investment opportunity, appealing to a wide range of buyers.

EARLY VIEWINGS ADVISED!

We are excited to introduce this ground floor one bedroom apartment to the market, set within a charming Victorian house conversion and situated in a prime central location. Benefiting from one double bedroom, lounge, kitchen, bathroom and off-road parking.

Located in the prime location of Mutley, close to a host of local amenities such as shops and restaurants, well-regarded schools, local parks whilst being a stone's throw away from the city centre, Plymouth university and major transport links.

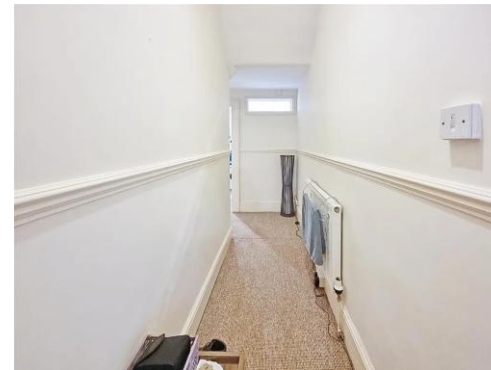
The property offers a comfortable double bedroom, a bathroom comprising bath with overhead shower, hand basin and W.C., a well-equipped kitchen with matching wall and

base units and a spacious bright and airy lounge, bringing in ample natural daylight.

One of the standout features of this property is the rare off-road parking, a highly sought-after convenience in such a central location. The flat also benefits from a newly issued 999-year lease.

This apartment is the perfect opportunity for a first-time buyer or those seeking an investment opportunity, appealing to a wide range of buyers.

EARLY VIEWINGS ADVISED!



To view this property please contact Connells on

T 01752 674 467
E plymouth@connells.co.uk

32 Mannamead Road
PLYMOUTH PL4 7AA

EPC Rating: D Council Tax
Band: A

Service Charge: Ask
Agent

Ground Rent:
50.00

Tenure: Leasehold

view this property online [connells.co.uk/Property/PLH313447](https://www.connells.co.uk/Property/PLH313447)

This is a Leasehold property with details as follows; Term of Lease 999 years from 01 Jan 1993. Should you require further information please contact the branch. Please Note additional fees could be incurred for items such as



1. MONEY LAUNDERING REGULATIONS Intending purchasers will be asked to produce identification documentation at a later stage and we would ask for your co-operation in order that there will be no delay in agreeing the sale. 2. These particulars do not constitute part or all of an offer or contract. 3. The measurements indicated are supplied for guidance only and as such must be considered incorrect. Potential buyers are advised to recheck measurements before committing to any expense. 4. We have not tested any apparatus, equipment, fixtures, fittings or services and it is in the buyers interest to check the working condition of any appliances.

Connells Residential is registered in England and Wales under company number 1489613, Registered Office is Cumbria House, 16-20 Hockliffe Street, Leighton Buzzard, Bedfordshire, LU7 1GN. VAT Registration Number is 500 2481 05.

See all our properties at www.connells.co.uk | www.rightmove.co.uk | www.zoopla.co.uk

Property Ref: PLH313447 - 0002