



## Orde Hall Street, WC1N

£600,000

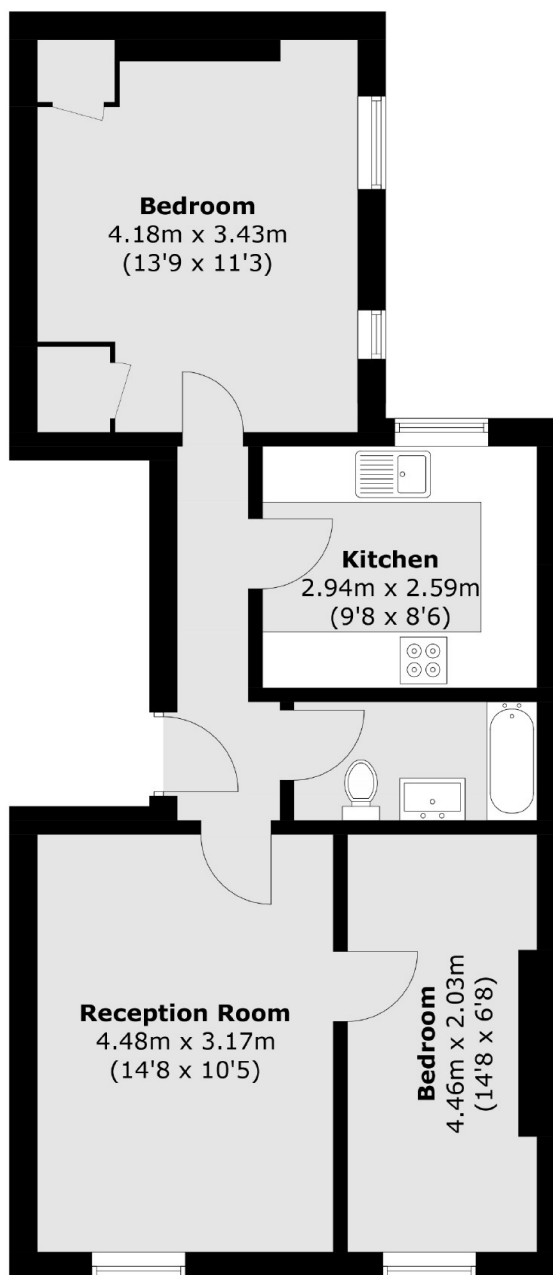
Set within a row of Victorian townhouses, this two-bedroom apartment enjoys natural light that floods the front-facing lounge throughout the day. Just a stone's throw away from the renowned Lamb's Conduit Street, the flat is surrounded by independent shops, leafy squares and vibrant local culture.

Bloomsbury offers easy walking access to Covent Garden, Theatreland, the British Museum, and major transport hubs, including St. Pancras International. This is a rare opportunity to live in one of London's most historic and sought-after neighbourhoods. Orde Hall Street area is known for its academic institutions, including University College London (UCL) and the British Museum, as well as a variety of cultural and historical sites.

### Features

- Central Location
- No Onward Chain
- Period Property
- Two Bedroom
- Low Service Charge
- High Ceilings

# Orde Hall Street, London, WC1N



Total area (approx.): 54.8 sq. m (589.8 sq. ft)