

Plot 9 Bayport, Uplands Hadfield, Glossop, Derbyshire, SK13 2NX

Prices From £454,950

- VIEWINGS BY APPOINTMENT ONLY
- 1,584sq ft Four Bedroom Detached
- Premier Bosch Kitchen Appliances
- Oversized Integral Garage & Parking for Two Cars
- Three Storey to the Front, Two Storey to the Rear
- Quality Open Plan kitchen Dining Area
- Large Terraced Garden

Uplands Hadfield, SK13 2NX

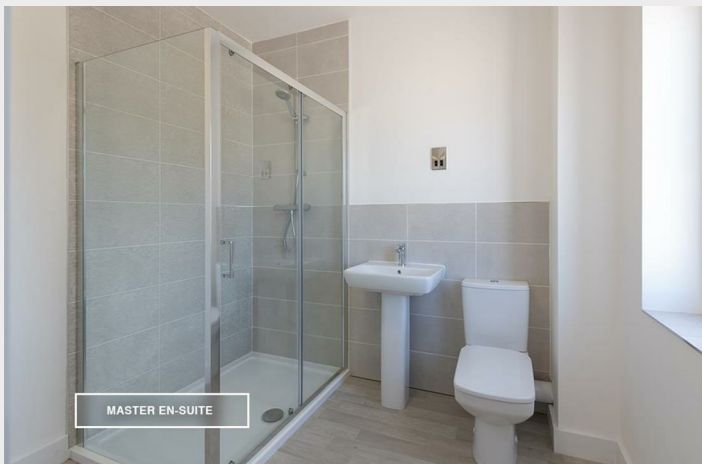
*** £10,000 DEPOSIT PAID FOR RESERVATIONS TAKEN BEFORE 31ST MAY 2026 ***

** Open Day 16-17th May - Show Home Ready For Viewings **

Plot 9, The Bayport, is a magnificent 1,584 sq ft four-bedroom detached home, designed for those who value both space and style. Boasting an oversized integral garage and private driveway for two cars, this home offers exceptional practicality without compromising on luxury.
VIEWINGS BY APPOINTMENT ONLY.



Council Tax Band:



MASTER EN-SUITE



REAR ELEVATION

Elegant Living with Breathtaking High Peak Views

*** £10,000 DEPOSIT PAID FOR RESERVATIONS
TAKEN BEFORE 31ST MAY 2026 ***

The Bayport is a magnificent 1,584 sq ft four-bedroom detached home, designed for those who value both space and style. Boasting an oversized integral garage and private driveway for two cars, this home offers exceptional practicality without compromising on luxury.

The striking elevated, bay-fronted lounge provides a sophisticated retreat with stunning views of the High Peak countryside, while the tiered garden to the rear creates the perfect outdoor sanctuary.

Three-storey to the front and two-storey to the rear, this thoughtfully designed home offers quality craftsmanship along with ample storage, making it ideal for families and those seeking exceptional space and value.

Key Features:

- 1,584 sq ft four-bedroom, detached home
- Three-storey accommodation offering exceptional flexibility
- Stylish, high quality open-plan kitchen & dining area with double French doors leading to a patio and tiered garden
- Premium kitchen appliances, including a Bosch double oven, 5-ring gas hob, and integrated fridge freezer
- Boot / utility room plus additional storage space
- Ground floor WC
- Porcelanosa tiles as standard
- Contemporary square profile sanitaryware
- Master bedroom with modern en-suite
- Separate bay-fronted lounge with stunning views over High Peak
- Large terraced garden
- Oversized integral garage and driveway

Experience a home of elegance, comfort, and exceptional specification in the heart of the High Peak countryside.

Please Note

(For illustrative purposes only. Computer generated images and photography are intended for illustrative purposes only and should be treated as general guidance only.)



Directions

Viewings

Viewings by arrangement only. Call 0161 432 0432 to make an appointment.

EPC Rating:

| Energy Efficiency Rating | | Current | Potential |
|---|--|-------------------------|-----------|
| Very energy efficient - lower running costs | | | |
| (92 plus) A | | | |
| (81-91) B | | | |
| (69-80) C | | | |
| (55-68) D | | | |
| (39-54) E | | | |
| (21-38) F | | | |
| (1-20) G | | | |
| Not energy efficient - higher running costs | | | |
| England & Wales | | EU Directive 2002/91/EC | |

The Bayport | 4 BEDROOM DETACHED

Uplands
WOOLLEY BRIDGE, HADFIELD

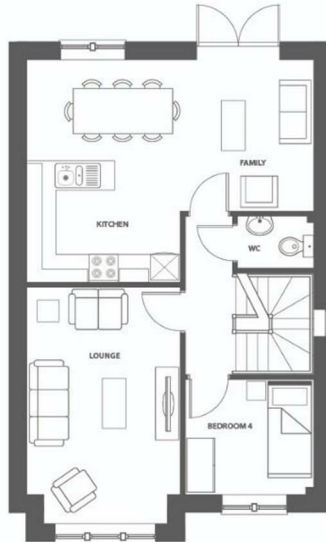
INTERNAL FLOOR AREAS:

| | |
|---------------------|--|
| LOWER GROUND FLOORS | 36.18 M ² 167.92 FT ² |
| UPPER GROUND FLOOR | 56.28 M ² 605.87 FT ² |
| FIRST FLOOR | 54.75 M ² 589.34 FT ² |
| TOTAL | 147.21 M ² 1,584.55 FT ² |



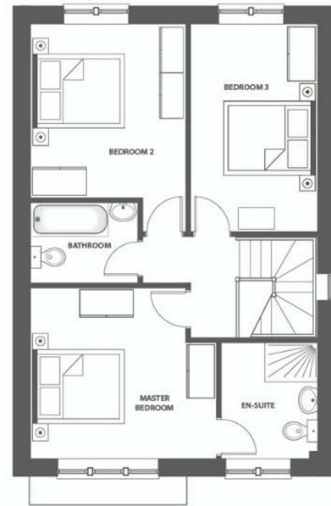
LOWER GROUND FLOOR

| | |
|---------------------|-------------------------------|
| GARAGE | 6.00M X 3.20M 19'8" X 10'6" |
| BOOT ROOM / UTILITY | 2.03M X 2.75M 6'8" X 9'0" |



UPPER GROUND FLOOR

| | |
|---------------------------|-------------------------------|
| LOUNGE | 4.96M X 3.20M 16'3" X 10'6" |
| KITCHEN . FAMILY / DINING | 6.03M X 4.65M 19'9" X 15'3" |
| WC | 1.10M X 1.60M 3'7" X 5'3" |
| BEDROOM 4 | 2.70M X 2.44M 8'10" X 8'0" |



FIRST FLOOR

| | |
|----------------|---|
| MASTER BEDROOM | 3.90M X 3.59M 12'9" X 11'9" |
| EN-SUITE | 2.44M X 2.01M 8'0" X 6'7" |
| BEDROOM 2 | 4.35M X 3.26M 14'3" X 10'8" (MAX ROOM SIZE) |
| BEDROOM 3 | 4.35M X 2.65M 14'3" X 8'8" |
| BATHROOM | 1.75M X 2.26M 5'9" X 7'5" |