



JR Sales & Letting

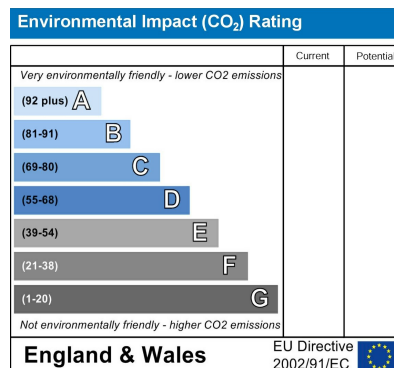
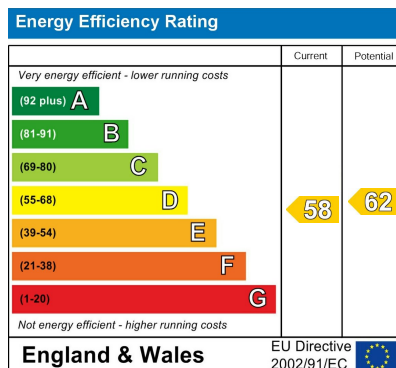
**Plough Hill
Cuffley**



**£774,950
Freehold**

Offered chain free, this attractive 1930s four-bedroom detached bungalow provides spacious and versatile accommodation throughout. The property features an extended living room, three well-proportioned ground floor bedrooms and a modern shower room, while the first floor offers a generous principal bedroom with its own bathroom. The kitchen overlooks a beautiful approximately 80ft rear garden, ideal for families and entertaining. Additional benefits include driveway parking and a storage garage. Conveniently situated within half a mile of the village shops, local amenities, and Cuffley Train Station, providing excellent links to Moorgate and Finsbury Park.

- Chain Free
- Four Bedrooms
- Two Bathrooms
- 80' Garden
- Driveway Parking
- Potential to Extend
- Versatile Accommodation
- Good Sized Lounge
- Gas Heating & Double Glazing
- Viewing highly recommended



Front

Mainly laid to lawn. Shrub and flower borders. Driveway for parking for up to 3 cars.

Entrance

Hardwood entrance door to the:-

Hallway

2 radiators. Stairs to the first floor. Airing cupboard housing an immersion cylinder. Doors to:-

Bedroom 1

14'9 x 11'5
Leaded light double glazed bay window to the front. Double radiator. Coving to ceiling.

Bedroom 3

14'2 x 11'
Leaded light double glazed windows to the front. Coving to ceiling. Radiator.

Bedroom 4

14'9 x 9'1 into the recess
Double glazed window to the side. Coving to ceiling. Radiator.

Bathroom

Opaque double glazed window to side. Pedestal wash hand basin. Low flush W.C. Chrome towel radiator. Wet room shower set up with mixer valve and rain head with shower attachment. Extractor fan. Inset spotlights to ceiling. Extensively tiled walls.

Living Room

23' x 17'1
Leaded light double glazed windows to the side. Double glazed patio doors and windows to the rear. 4 double radiators. Wall lights. Glazed double doors to the:-

Kitchen

16'5 x 9'6
Leaded light double glazed window to the rear. UPVC double glazed door to the garden. 2 radiators. Coving to ceiling. Wall mounted 'Ideal' boiler. Range of wall and base fitted

units with roll edge work surfaces over incorporating a stainless steel sink with mixer tap and drainer. Four ring gas hob with extractor fan over. Oven. Plumbing for washing machine and dishwasher. Tiled splash backs.

First floor

Opaque double glazed window to the side. Built in wardrobe. Doors to:-

Bedroom 1

14'8 x 17'9
Dual aspect room with leaded light double glazed window to the front and rear. 2 double radiators. Built in storage cupboard. Storage in the eaves.

Bathroom

Opaque double glazed window to the side. Double radiator. Low flush W.C. Pedestal wash hand basin with mixer tap. Panel bath with mixer tap. Part tiled walls.

Garden

80' approx
Mainly laid to lawn with shrub and flower borders. Patio paved area. Outside water tap. Side access.

Garage

13'2 x 6'4
Up and over door.

Agents Note

Please note photos are from previous listing so will be furnished differently on viewing

Whilst every effort has been made to ensure the accuracy of these particulars, all measurements are approximate and for guidance only. Photographs may have been digitally enhanced, edited, or AI-assisted for presentation purposes. Buyers are advised to satisfy themselves by inspection and independent verification.



JR Sales & L



JR Sales & L



JR Sales & L



JR Sales & L





JR Sales & L



JR Sales & L

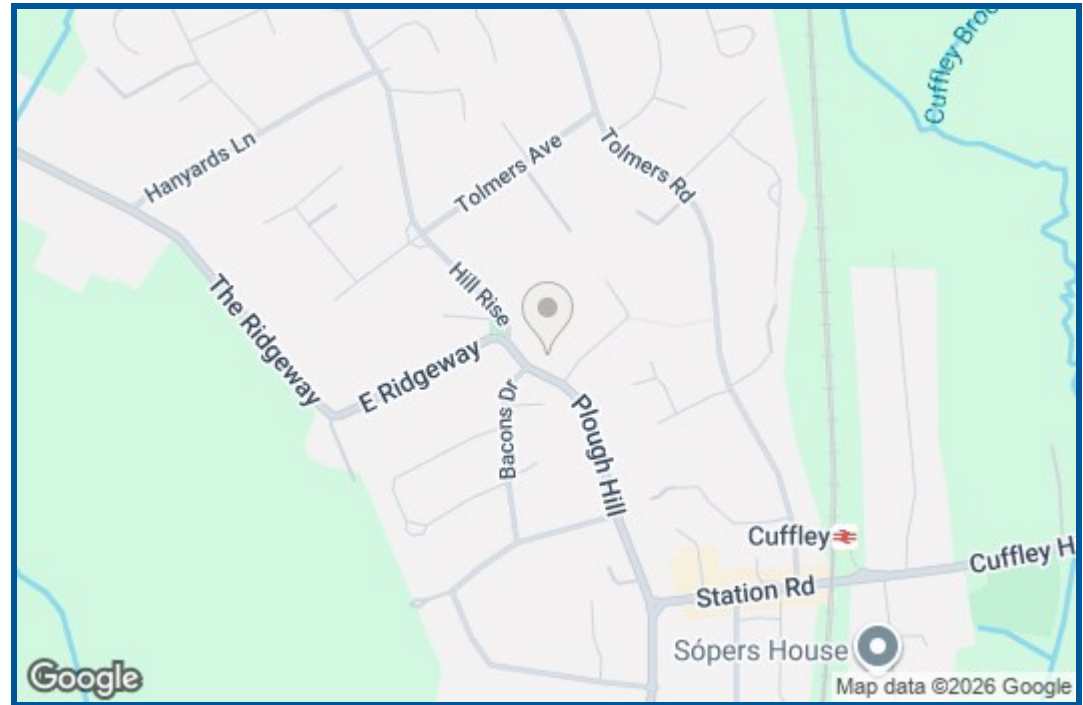


JR Sales & L



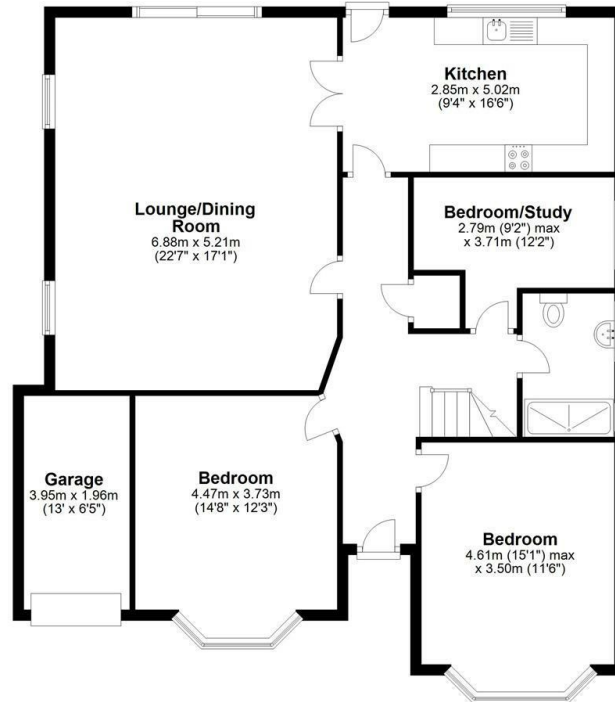
JR Sales & L





Ground Floor

Approx. 117.4 sq. metres (1263.3 sq. feet)



First Floor

Approx. 36.5 sq. metres (393.4 sq. feet)



Total area: approx. 153.9 sq. metres (1656.7 sq. feet)