

Property ref: 158159

Rainbow Cottage, Reading, RG31 7QJ

£1,695 PCM

HASLAM'S
Lettings



A rare opportunity to rent a charming period three bedroom cottage situated close to Calcot Golf Course.
West Berkshire Council tax band D.
Water supply: Mains
Drainage info: Mains
Electricity supply: Mains
Gas supply: Mains
Broadband/Mobile Info: Connections available. For an indication of specific speeds and supply of Broadband and Mobile, we advise applicants go to the Ofcom website Broadband and Mobile Coverage Checker.

Available 08/06/2026

*Fees For Assured Shorthold Tenancies: when you rent a property from us you will be required to pay a sum equivalent to one weeks' rent for a holding deposit. Upon successful application, this amount will be off set against your first months' rent. You will also be required to pay a security deposit equivalent to 5 weeks' rent which will be held and protected in line with Deposit legislation. For more information about our fees please visit: www.haslams.net
Fees for all other tenancies (Non Housing Act Tenancies / Company Lets): when you rent a property from us we will charge you a one-off fee per property. This charge is the equivalent of 15 days of the monthly rental charge (+VAT) with a minimum fee of £450 (inc.VAT) up to a maximum of £650 (inc.VAT). Other fees may apply depending on your circumstances.

- Three bedrooms; Unfurnished
- Fully fitted kitchen with appliances
- Modern bathroom with shower over the bath
- Gas central heating; EPC rating D
- Private garden just a short walk from the property
- Street parking; Managed by LANDLORD

0118 960 1055

lettings@haslams.net www.haslams.net

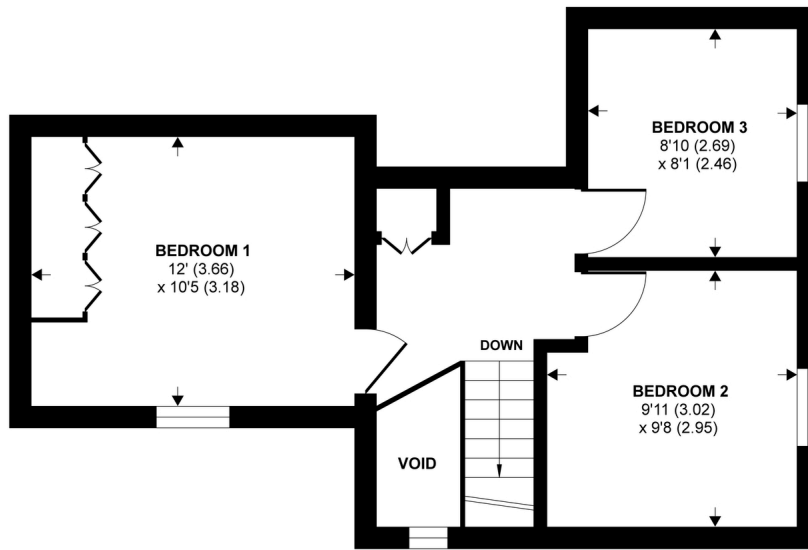
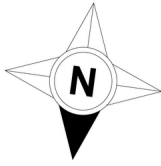
Haslams Estate Agents Ltd, 159 Friar Street, Reading, Berkshire, RG1 1HE



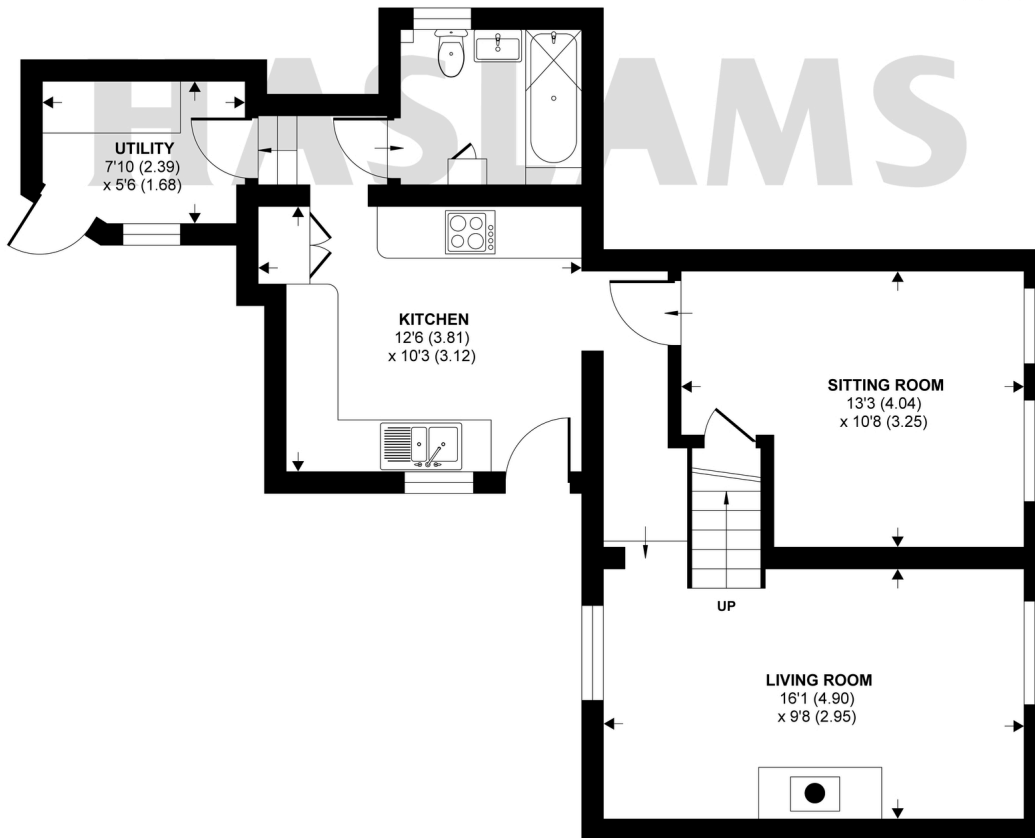
Bath Road, Calcot, Reading, RG31

Approximate Area = 962 sq ft / 89 sq m (excludes void)

For identification only - Not to scale



FIRST FLOOR



GROUND FLOOR



Floor plan produced in accordance with RICS Property Measurement Standards incorporating International Property Measurement Standards (IPMS2 Residential). © nichecom 2021. Produced for Haslam's. REF: 748305