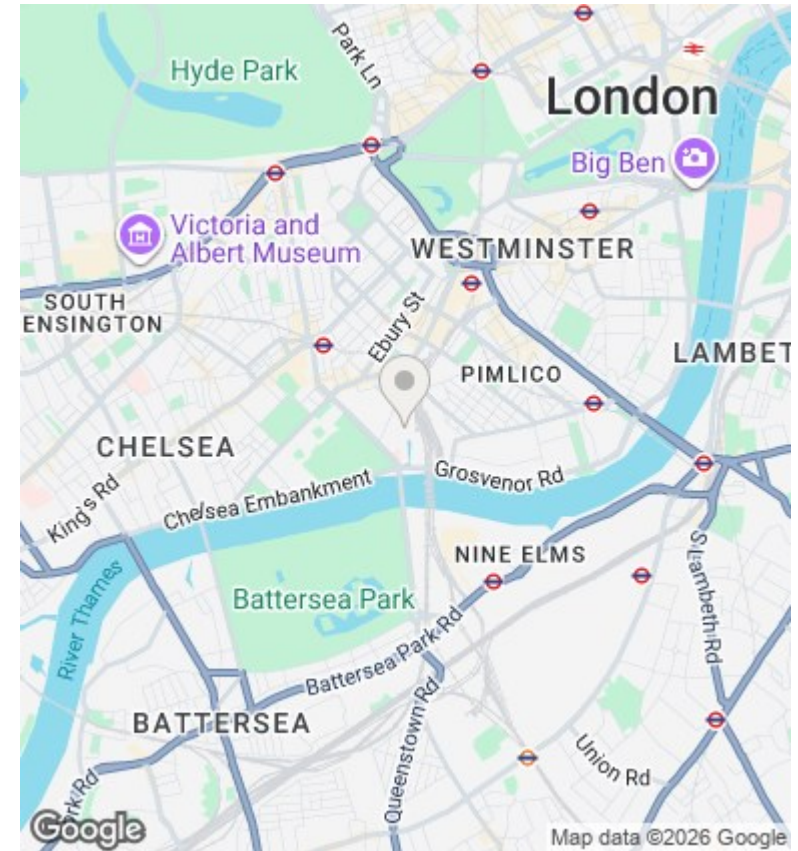
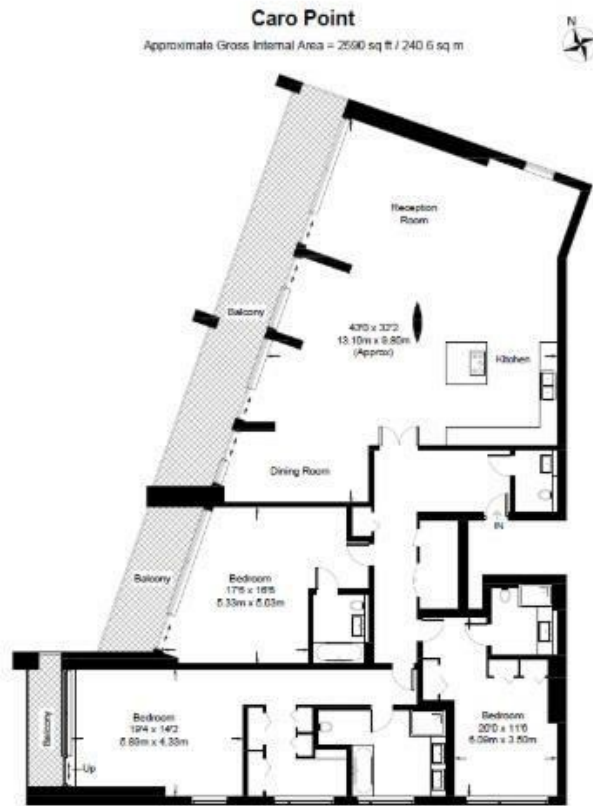




Caro Point , Grosvenor Waterside, Gatliff Road, Sloane Square, London SW1W 8BD
£4,250,000

- 24/7 CONCIERGE
- LARGE 2 BALCONIES OVERLOOKING DOCK
- 2500 SQ FEET
- VIDEO VIEWING AVAILABLE
- FULLY FURNISHED
- WALKING DISTANCE TO SLOANE SQUARE AND VICTORIA STATIONS
- 3 BEDROOMS 4 BATHROOMS
- 2 ALLOCATED PARKING SPACE
- MOMENTS AWAY FROM BATTERSEA PARK AND THE BATTERSEA POWERSTATION



Viewings

Viewings by arrangement only.
Call 02077225022 to make an appointment.

Council Tax Band

B

EPC Rating:

B

Energy Efficiency Rating		Current	Potential
<i>Very energy efficient - lower running costs</i>			
(92 plus) A			
(81-91) B		83	83
(69-80) C			
(55-68) D			
(39-54) E			
(21-38) F			
(1-20) G			
<i>Not energy efficient - higher running costs</i>			
England & Wales		EU Directive 2002/91/EC	