

St. Marks Road, W11

£1,400 Per calendar month

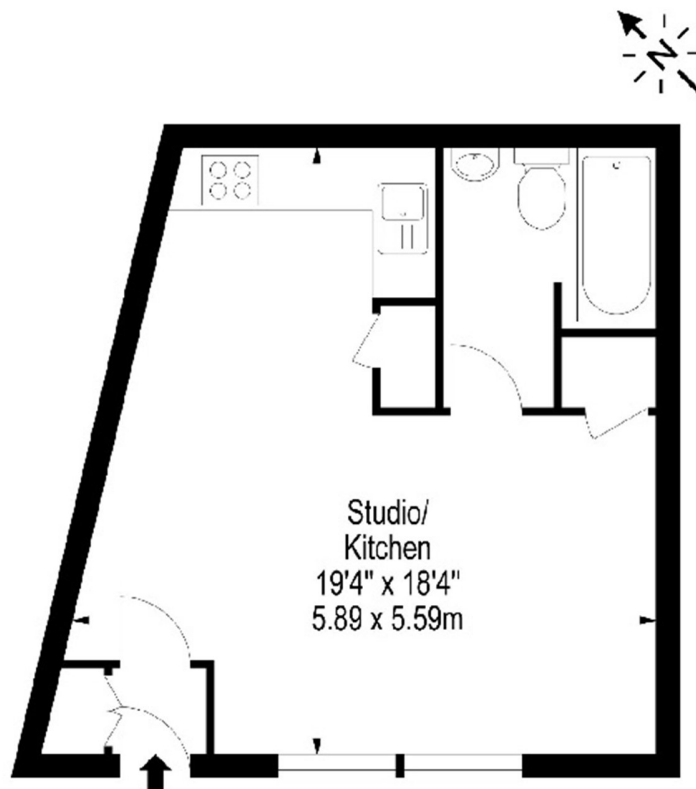
Newly refurbished spacious ground floor modern studio flat with wooden floors, the property comprises of a large studio room with open-plan fitted kitchen with washing machine, bathroom with power shower, and ample storage throughout.

Ideally located in the heart of Ladbroke Grove, very close to the station and the famous Portobello Road market. A short walk to Holland Park with easy access to Westfield Shopping centre.

Features

- Studio Flat
- Ground Floor
- Newly Refurbished
- Wood floors
- Ample storage
- Close to Notting Hill

St. Marks Road, London, W11



Ground Floor

Approx Gross Internal Area 332 Sq Ft - 30.84 Sq M

Floor Plan Supplied For Identification Purposes Only And May Not Be Accurate
Floor Plan by www.elegantmediasolution.com