

Ringers Spinney, Oadby

£650,000 Freehold

Detached 3-bedroom bungalow on one of Oadby's most prestigious addresses, set on approx 0.3 acre plot. Ideal redevelopment, refurbishment or extension opportunity (STPP) with a large rear garden.

Council Tax band: E

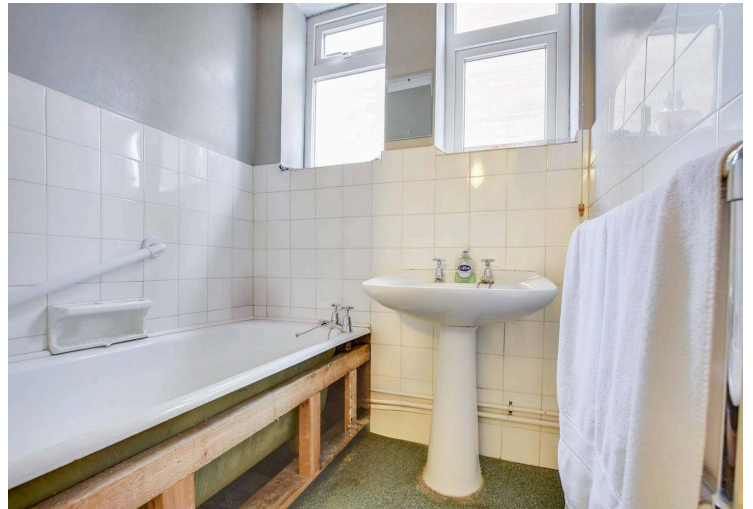
Tenure: Freehold

EPC Energy Efficiency Rating: E



0116 271 3333





Entrance Hall

An L-shaped hallway that wraps around to the left-hand side, carpet flooring, a storage cupboard to the rear, and a radiator.

Reception Room

18' 11" x 12' 0" (5.77m x 3.66m)

With a double-glazed bay window to the front elevation, double-glazed patio doors to the rear elevation, carpet flooring, a serving hatch to the kitchen, and three radiators.

Kitchen

12' 11" x 9' 1" (3.94m x 2.77m)

With a double-glazed window to the rear elevation, a serving hatch to the lounge, tiled floor, a sink and drainer unit with a range of wall and base units with work surfaces over, and a radiator.



Bedroom One

13' 11" x 12' 0" (4.24m x 3.65m)

With a double-glazed window to the front elevation, carpet flooring, and a radiator.

Bedroom Two

11' 11" x 10' 3" (3.63m x 3.13m)

With a double-glazed window to the rear elevation, two storage cupboards, carpet flooring, and a radiator.

Bedroom Three

9' 1" x 6' 11" (2.77m x 2.10m)

With a double-glazed window to the side elevation, a storage cupboard to the rear, carpet flooring, and a radiator.

Bathroom

7' 1" x 5' 7" (2.15m x 1.69m)

With two double-glazed windows to the side, a bath, a handwash basin, a carpet, and a towel rail over a radiator.

WC

7' 0" x 2' 5" (2.14m x 0.73m)

With a double-glazed window to the side, vinyl plank flooring, and a WC.

Rear Garden

Predominantly laid to lawn, with a generous plot extending a considerable distance to the rear.

Driveway

Off-street parking with capacity for 4+ vehicles.



FLOOR PLAN CREATED BY CUBICASA APP. MEASUREMENTS DEEMED HIGHLY RELIABLE BUT NOT GUARANTEED.

We'll keep you moving...



We must inform all prospective purchasers that the measurements are taken by an electronic tape and are provided as a guide only and they should not be used as accurate measurements. We have not tested any mains services, gas or electric appliances, or fixtures and fittings mentioned in these details, therefore, prospective purchasers should satisfy themselves before committing to purchase. Intending purchasers must satisfy themselves by inspection or otherwise to the correctness of the statements contained in these particulars. Knightsbridge Estate Agents & valuers (nor any person in their employment) has any authority to make any representation or warranty in relation to the property.' The floor plans are not to scale, and are intended for use as a guide to the layout of the property only. They should not be used for any other purpose. Similarly, the plans are not designed to represent the actual décor found at the property in respect of flooring, wall coverings or fixtures and fittings.