



CRANE STREET, SE10

£2,400 per month

Period town house
Two double bedrooms
Modern bathroom suite
Private rear garden
Close to Cutty Sark DLR
Energy rating: d

@marshandparsons
marshandparsons.co.uk

MARSH &
PARSONS



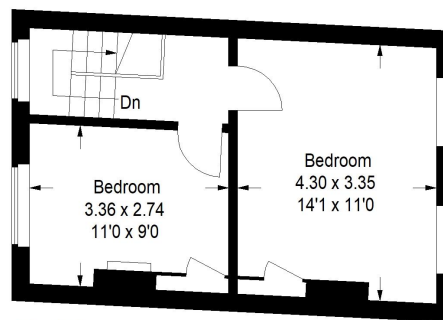
ABOUT THE PROPERTY

A two bedroom terraced house with a private garden. Inside you will find two double bedrooms, modern bathroom suite with shower, good size lounge and fully fitted kitchen.

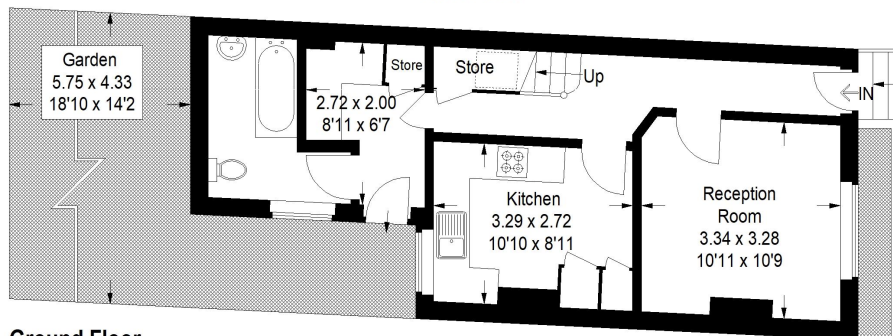
Ideally located within walking distance from Cutty Sark DLR station and the centre of Greenwich. Greenwich mainline station and Greenwich Park are also close by. Greenwich town centre offers a variety of supermarkets, coffee shops, restaurants and riverside pubs and bistros.




STEP INSIDE CRANE STREET



First Floor



Ground Floor

 = Reduced headroom below 1.5 m / 5'0

Approximate Gross Internal Area
Ground Floor = 40.2 sq m / 433 sq ft
First Floor = 29.5 sq m / 317 sq ft
Total = 69.7 sq m / 750 sq ft



Greenwich
020 8815 2230

Energy Rating: D We aim to make our particulars both accurate and reliable. However, they are not guaranteed; nor do they form part of an offer or contract. If you require clarification on any points then please contact us, especially if you're traveling some distance to view. Please note that appliances and heating systems have not been tested and therefore no warranties can be given as to their good working order

MARSH &
PARSONS