



**Bancroft Road, E1**  
**£950,000**

**Dexters**



## Bancroft Road, E1

Five bedroom freehold house arranged over three floors, with a south-west facing private garden providing an abundance of sunlight throughout the day. The freehold includes a private garage attached. Located right by the Carlton Square conservation area and a short distance to Mile End Park and Victoria Park. The property is being sold chain free.

Bancroft Road is set within a convenient location between Stepney Green and Mile End. The area gives the resident access to a wide array of bars, restaurants, boutique cafés as well as being very well connected with easy access to Stepney Green underground station (District, Hammersmith & City) and Mile End underground station (District, Hammersmith & City, Central).

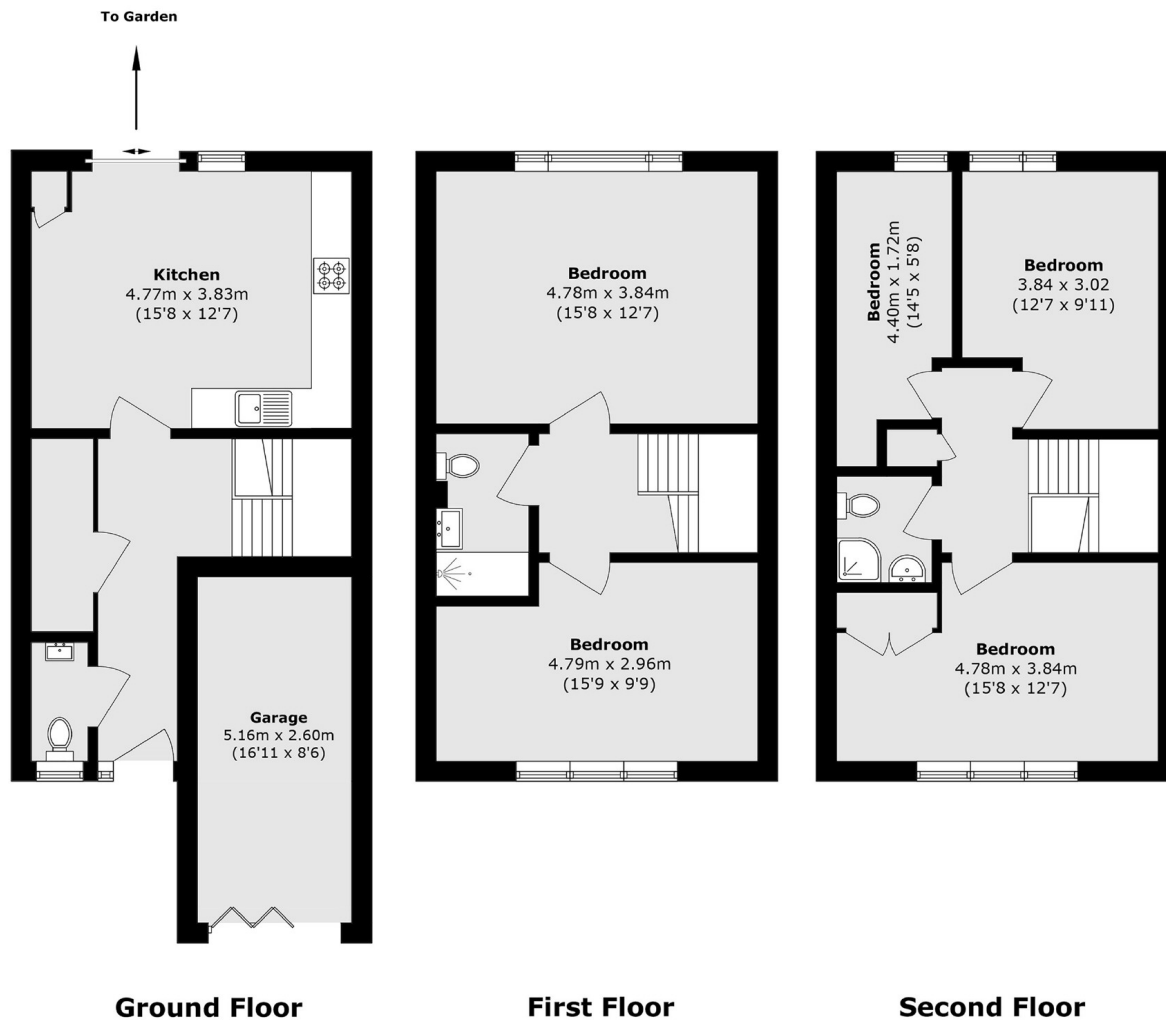
### Features

- Freehold House
- South-West Garden
- Private Garage Attached
- Arranged Over Three Floors
- Short Distance To Victoria Park
- Chain Free





# Bancroft Road, London, E1



Total area (approx.): 118.2 sq. m (1272.3 sq. ft)  
(Excluding Garage)

Garage area (approx.): 13.4 sq. m (144.2 sq. ft)